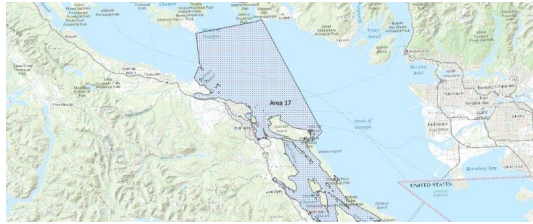


FISHERIES AND OCEANS CANADA

SOUTH COAST ASSESSMENT BULLETIN

CREEL SURVEY DATA REVIEW PACKAGE

Area 17 September 2022



Prepared By:
South Coast Salmon Stock Assessment Section

Thursday 19th January, 2023



Fisheries and Oceans
Canada

Pêches et Océans
Canada



Table 1: Numbers of Interviews conducted contributing to the area by day and access site.

		Brechin		Bucaneer	Cowichan Bay	Crofton Ramp		French Ck	Ladysmith		Mill Bay	Schooner		Sewell's West
Date	Day Type	AM	PM	PM	PM	AM	PM	PM	AM	PM	PM	AM	PM	PM
29 Aug 2022	Midweek	17					11							
30 Aug 2022	Midweek									4				
31 Aug 2022	Midweek		24											
01 Sep 2022	Midweek		14											
02 Sep 2022	Midweek	22											24	
03 Sep 2022	Weekend								5				3	
04 Sep 2022	Weekend		10											
05 Sep 2022	Weekend	42												
06 Sep 2022	Midweek										2			
07 Sep 2022	Midweek													
08 Sep 2022	Midweek													
09 Sep 2022	Midweek					2							3	
10 Sep 2022	Weekend									9				
11 Sep 2022	Weekend				1							9		
12 Sep 2022	Midweek													
13 Sep 2022	Midweek													
14 Sep 2022	Midweek		18											
15 Sep 2022	Midweek									1				
16 Sep 2022	Midweek	1												
17 Sep 2022	Weekend									7		9		
18 Sep 2022	Weekend		2										7	
19 Sep 2022	Midweek								2					
20 Sep 2022	Midweek			1										
21 Sep 2022	Midweek					1								
22 Sep 2022	Midweek											4		
23 Sep 2022	Midweek								1					
24 Sep 2022	Weekend	19					4							
25 Sep 2022	Weekend					6								
26 Sep 2022	Midweek							1						
27 Sep 2022	Midweek													1
28 Sep 2022	Midweek		3											
29 Sep 2022	Midweek									2		2		
30 Sep 2022	Midweek						11							
01 Oct 2022	Weekend													
02 Oct 2022	Weekend													
03 Oct 2022	Midweek													

Table 2: Daily tally of interviews, catch and effort.

Date	Day	Average Fishing Conditions	Interviews & Log Trips	Chinook	Coho	Sockeye	Halibut	Observed Fishing	Flight Time	Expanded Fishing
29-Aug-2022	Monday	choppy	28	8				41	1139	109
30-Aug-2022	Tuesday	calm/rippled	4	1						
31-Aug-2022	Wednesday	calm/rippled	27	7						
01-Sep-2022	Thursday	frequent whitecaps	14	7				13	1222	39
02-Sep-2022	Friday	calm/rippled	48	10	3					
03-Sep-2022	Saturday	frequent whitecaps	8					20	1245	53
04-Sep-2022	Sunday	frequent whitecaps	10	4						
05-Sep-2022	Monday (Labour Day)	choppy	43	10	2					
06-Sep-2022	Tuesday		0							
07-Sep-2022	Wednesday	choppy	2					2	1221	6
08-Sep-2022	Thursday		0							
09-Sep-2022	Friday	choppy	5							
10-Sep-2022	Saturday	calm/rippled	9	3				57	1244	144
11-Sep-2022	Sunday	calm/rippled	10	2						
12-Sep-2022	Monday		1					28	1237	84
13-Sep-2022	Tuesday		2							
14-Sep-2022	Wednesday	choppy	18	6	1					
15-Sep-2022	Thursday	choppy	3							
16-Sep-2022	Friday	frequent whitecaps	1							
17-Sep-2022	Saturday	choppy	16		1					
18-Sep-2022	Sunday	choppy	9	1				7	1234	17
19-Sep-2022	Monday	choppy	2							
20-Sep-2022	Tuesday	calm/rippled	1							
21-Sep-2022	Wednesday	calm/rippled	1					22	1242	66
22-Sep-2022	Thursday	frequent whitecaps	4		5					
23-Sep-2022	Friday	calm/rippled	1							
24-Sep-2022	Saturday	calm/rippled	25		1					
25-Sep-2022	Sunday	calm/rippled	7		1			32	1247	82
26-Sep-2022	Monday	calm/rippled	1							
27-Sep-2022	Tuesday	calm/rippled	1	6						
28-Sep-2022	Wednesday	choppy	3	1	2					
29-Sep-2022	Thursday	choppy	6							
30-Sep-2022	Friday	calm/rippled	11							
01-Oct-2022	Saturday		0							
02-Oct-2022	Sunday		0							
03-Oct-2022	Monday		2							
	Totals	choppy	125	30	11			16*		49*
	Totals	choppy	137	20	5			29*		74*

* Average number of boats Observed and Expanded

Table 3: Simple area based cpue (catch per boat trip) expansion.

Day Type	Average Expanded Boats	Number of Days	Total Estimated Effort	CPUE				Retained			
				Chinook	Coho	Sockeye	Halibut	Chinook	Coho	Sockeye	Halibut
Weekend	74	9	666	0.146	0.036			97	24		
Midweek	49	21	1029	0.24	0.088			247	91		

Table 4: Recent years estimates of retained catch and effort.

Year	Month	Total Effort	Chinook Kept	Coho Kept	Sockeye Kept	Halibut Kept
2017	September	2295	432	172		
2018	September	795	160	23	0	
2019	September	1033	406	121		0
2020	September	1668	243	71		0
2021	September	1163	280	8		
2022	September	2135	564	150		0
5-Yr Avg	September	1391	304	79	0	0

Table 5: Sport Head Recovery Review.

Species	Creel Marked Catch	Creel Mark Rate	Creel Submission Rate	iRec Marked Catch	iRec Mark Rate	iRec Submission Rate	Sport Head Recoveries
Coho	68	45%	6%	57	24%	7%	4
Chinook	105	19%	18%	127	34%	15%	19

Table 6: Guided Proprtions Review.

Data Source	Interviews / Angler Days	Guided Proportion
Creel Interivews	262	4%
iRec Anglers	3093	10%

Figure 1: Proportion of each day's fishing by hour.

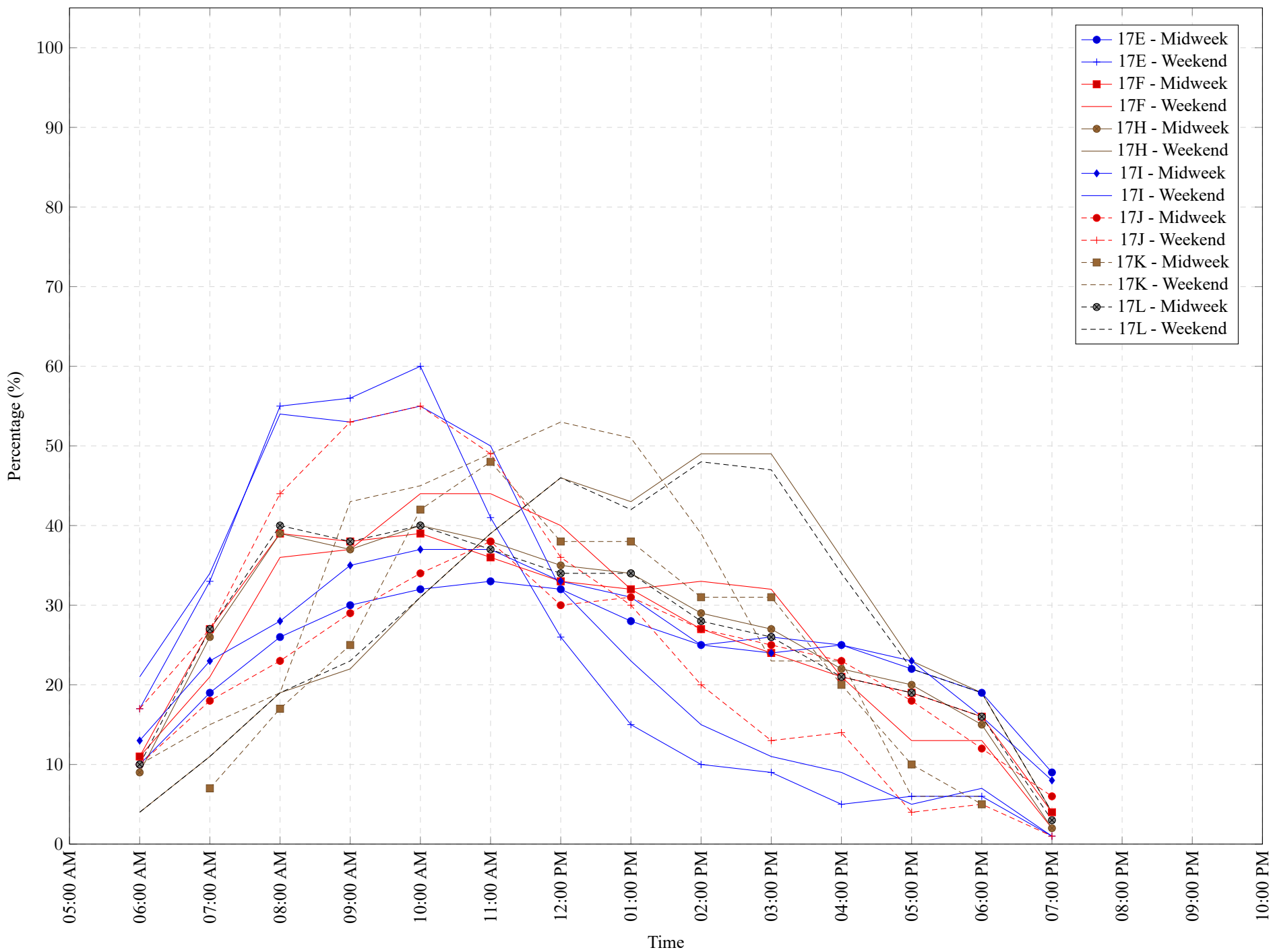


Table 7: Proportion of each day's fishing by hour.

Areas	Day Type	6:00 AM	7:00 AM	8:00 AM	9:00 AM	10:00 AM	11:00 AM	12:00 PM	01:00 PM	02:00 PM	03:00 PM	04:00 PM	05:00 PM	06:00 PM	07:00 PM	08:00 PM	09:00 PM	10:00 PM
17E	Midweek	10%	19%	26%	30%	32%	33%	32%	28%	25%	26%	25%	22%	19%	9%	0%	0%	0%
17E	Weekend	17%	33%	55%	56%	60%	41%	26%	15%	10%	9%	5%	6%	6%	1%	0%	0%	0%
17F	Midweek	11%	27%	39%	38%	39%	36%	33%	32%	27%	24%	21%	19%	16%	4%	0%	0%	0%
17F	Weekend	11%	21%	36%	37%	44%	44%	40%	32%	33%	32%	21%	13%	13%	2%	0%	0%	0%
17H	Midweek	9%	26%	39%	37%	40%	38%	35%	34%	29%	27%	22%	20%	15%	2%	0%	0%	0%
17H	Weekend	4%	11%	19%	22%	31%	39%	46%	43%	49%	49%	36%	23%	19%	4%	0%	0%	0%
17I	Midweek	13%	23%	28%	35%	37%	37%	33%	31%	25%	24%	25%	23%	16%	8%	0%	0%	0%
17I	Weekend	21%	34%	54%	53%	55%	50%	32%	23%	15%	11%	9%	5%	7%	1%	0%	0%	0%
17J	Midweek	10%	18%	23%	29%	34%	38%	30%	31%	27%	25%	23%	18%	12%	6%	0%	0%	0%
17J	Weekend	17%	27%	44%	53%	55%	49%	36%	30%	20%	13%	14%	4%	5%	1%	0%	0%	0%
17K	Midweek	0%	7%	17%	25%	42%	48%	38%	38%	31%	31%	20%	10%	5%	0%	0%	0%	0%
17K	Weekend	10%	15%	19%	43%	45%	49%	53%	51%	39%	23%	23%	6%	6%	0%	0%	0%	0%
17L	Midweek	10%	27%	40%	38%	40%	37%	34%	34%	28%	26%	21%	19%	16%	3%	0%	0%	0%
17L	Weekend	4%	11%	19%	23%	31%	39%	46%	42%	48%	47%	34%	22%	19%	4%	0%	0%	0%

Table 8: Daily Fishing Conditions.

Date	Day Type	Brechin	Bucaneer	Cowichan Bay	Crofton Ramp	French Ck	Ladysmith	Mill Bay	Schooner	Sewell's West
29 Aug 2022	Midweek	choppy			calm/rippled					
30 Aug 2022	Midweek						calm/rippled			
31 Aug 2022	Midweek	calm/rippled								
01 Sep 2022	Midweek	frequent whitecaps								
02 Sep 2022	Midweek	choppy							calm/rippled	
03 Sep 2022	Weekend						frequent whitecaps		frequent whitecaps	
04 Sep 2022	Weekend	frequent whitecaps								
05 Sep 2022	Weekend	choppy								
06 Sep 2022	Midweek									
07 Sep 2022	Midweek							choppy		
08 Sep 2022	Midweek									
09 Sep 2022	Midweek				calm/rippled				choppy	
10 Sep 2022	Weekend						calm/rippled			
11 Sep 2022	Weekend			choppy					calm/rippled	
12 Sep 2022	Midweek									
13 Sep 2022	Midweek									
14 Sep 2022	Midweek	choppy								
15 Sep 2022	Midweek						choppy			
16 Sep 2022	Midweek	frequent whitecaps								
17 Sep 2022	Weekend						calm/rippled		choppy	
18 Sep 2022	Weekend	frequent whitecaps							choppy	
19 Sep 2022	Midweek						choppy			
20 Sep 2022	Midweek		calm/rippled							
21 Sep 2022	Midweek				calm/rippled					
22 Sep 2022	Midweek								frequent whitecaps	
23 Sep 2022	Midweek						calm/rippled			
24 Sep 2022	Weekend	calm/rippled			choppy					
25 Sep 2022	Weekend				calm/rippled					
26 Sep 2022	Midweek					calm/rippled				
27 Sep 2022	Midweek									calm/rippled
28 Sep 2022	Midweek	choppy								
29 Sep 2022	Midweek						choppy		choppy	
30 Sep 2022	Midweek				calm/rippled					
01 Oct 2022	Weekend									
02 Oct 2022	Weekend									
03 Oct 2022	Midweek									