

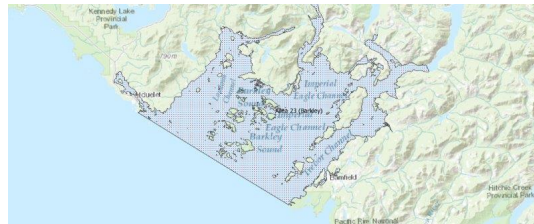
# FISHERIES AND OCEANS CANADA

## SOUTH COAST ASSESSMENT BULLETIN

### CREEL SURVEY DATA REVIEW PACKAGE

---

## Area 23 (Barkley) September 2022



---

*Prepared By:*  
South Coast Salmon Stock Assessment Section

Thursday 19<sup>th</sup> January, 2023



Fisheries and Oceans  
Canada

Pêches et Océans  
Canada



Table 1: Numbers of Interviews conducted contributing to the area by day and access site.

Date	Day Type	China Creek			Clutesi Ramp			Eagle Marine (Fuel Dock) MD	Harbour Quay - Derby Only		Island West			McKay Bay Gas Dock		Mills Landing			Poett Nook		Ucluelet Gov Dock	
		AM	MD	PM	AM	MD	PM		AM	PM	AM	MD	PM	MD	PM	AM	MD	PM	MD	PM	MD	PM
29 Aug 2022	Midweek				5																	
30 Aug 2022	Midweek											2						3				
31 Aug 2022	Midweek													24							7	
01 Sep 2022	Midweek							7														
02 Sep 2022	Midweek											1			15						1	
03 Sep 2022	Weekend		6										1	29								4
04 Sep 2022	Weekend		1							2	2				34						3	
05 Sep 2022	Weekend	1												23								
06 Sep 2022	Midweek				3							2					9					
07 Sep 2022	Midweek						1															
08 Sep 2022	Midweek																	9			3	
09 Sep 2022	Midweek															2						2
10 Sep 2022	Weekend							2														
11 Sep 2022	Weekend				2						1											
12 Sep 2022	Midweek										2			6								
13 Sep 2022	Midweek													3								
14 Sep 2022	Midweek							2													2	
15 Sep 2022	Midweek	1															1				2	
16 Sep 2022	Midweek						1												3			
17 Sep 2022	Weekend																2				4	
18 Sep 2022	Weekend							10						1								
19 Sep 2022	Midweek		2																			
20 Sep 2022	Midweek							1						1								
21 Sep 2022	Midweek	1																				
22 Sep 2022	Midweek																					
23 Sep 2022	Midweek				1									2								
24 Sep 2022	Weekend													1								
25 Sep 2022	Weekend							6														
26 Sep 2022	Midweek				1																	
27 Sep 2022	Midweek																					
28 Sep 2022	Midweek																					
29 Sep 2022	Midweek																					
30 Sep 2022	Midweek																					
01 Oct 2022	Weekend																					
02 Oct 2022	Weekend																					
03 Oct 2022	Midweek																					

Table 2: Daily tally of interviews, catch and effort.

Date	Day	Average Fishing Conditions	Interviews & Log Trips	Chinook	Coho	Sockeye	Halibut	Observed Fishing	Flight Time	Expanded Fishing
29-Aug-2022	Monday	calm/rippled	6	6	7			134	0724	235
30-Aug-2022	Tuesday	calm/rippled	7	12	4					
31-Aug-2022	Wednesday	frequent whitecaps	32	23	32					
01-Sep-2022	Thursday	calm/rippled	8	3	3					
02-Sep-2022	Friday	choppy	19	11	23					
03-Sep-2022	Saturday	choppy	40	30	33					
04-Sep-2022	Sunday	frequent whitecaps	40	17	41					
05-Sep-2022	Monday (Labour Day)	choppy	26	12	13			205	0932	251
06-Sep-2022	Tuesday	choppy	14	3	3			62	0730	111
07-Sep-2022	Wednesday	frequent whitecaps	1	1						
08-Sep-2022	Thursday	choppy	12	1	15					
09-Sep-2022	Friday	choppy	4	6	5					
10-Sep-2022	Saturday	choppy	2	3	1			61	0728	86
11-Sep-2022	Sunday	choppy	3		3					
12-Sep-2022	Monday	choppy	8		5					
13-Sep-2022	Tuesday	calm/rippled	5	2	3					
14-Sep-2022	Wednesday	calm/rippled	2	3	2					
15-Sep-2022	Thursday	calm/rippled	4		2			13	0735	24
16-Sep-2022	Friday	frequent whitecaps	4	1	4					
17-Sep-2022	Saturday	choppy	6	9	9			10	0731	14
18-Sep-2022	Sunday	calm/rippled	11		5					
19-Sep-2022	Monday	frequent whitecaps	2							
20-Sep-2022	Tuesday	frequent whitecaps	2				1	8	0730	14
21-Sep-2022	Wednesday	calm/rippled	2		3					
22-Sep-2022	Thursday		0							
23-Sep-2022	Friday	choppy	3	1	1					
24-Sep-2022	Saturday	calm/rippled	1							
25-Sep-2022	Sunday	choppy	6	1	1			6	0730	8
26-Sep-2022	Monday	calm/rippled	1		1					
27-Sep-2022	Tuesday		0							
28-Sep-2022	Wednesday		0							
29-Sep-2022	Thursday		0							
30-Sep-2022	Friday		0					5	1438	15
01-Oct-2022	Saturday		0							
02-Oct-2022	Sunday		0							
03-Oct-2022	Monday		0							
	Totals	choppy	91	32	70		1	22*		41*
	Totals	choppy	135	72	106			71*		90*

\* Average number of boats Observed and Expanded

**Table 3: Simple area based cpue (catch per boat trip) expansion.**

Day Type	Average Expanded Boats	Number of Days	Total Estimated Effort	CPUE				Retained			
				Chinook	Coho	Sockeye	Halibut	Chinook	Coho	Sockeye	Halibut
Weekend	90	9	810	0.533	0.785			432	636		
Midweek	41	21	861	0.352	0.769		0.011	303	662		9

**Table 4: Recent years estimates of retained catch and effort.**

Year	Month	Total Effort	Chinook Kept	Coho Kept	Sockeye Kept	Halibut Kept
2017	September	2632	2438	1725		
2018	September	2733	1745	626		
2019	September	1265	697	475		0
2020	September	2673	490	478		0
2021	September	2550	1806	1306		0
2022	September	1942	717	1400		2
5-Yr Avg	September	2371	1435	922		0

**Table 5: Sport Head Recovery Review.**

Species	Creel Marked Catch	Creel Mark Rate	Creel Submission Rate	iRec Marked Catch	iRec Mark Rate	iRec Submission Rate	Sport Head Recoveries
Coho	199	27%	23%	736	49%	6%	46
Chinook	16	4%	44%	558	40%	1%	7

**Table 6: Guided Proprtions Review.**

Data Source	Interviews / Angler Days	Guided Proportion
Creel Interivews	226	10%
iRec Anglers	4156	4%

Figure 1: Proportion of each day's fishing by hour.

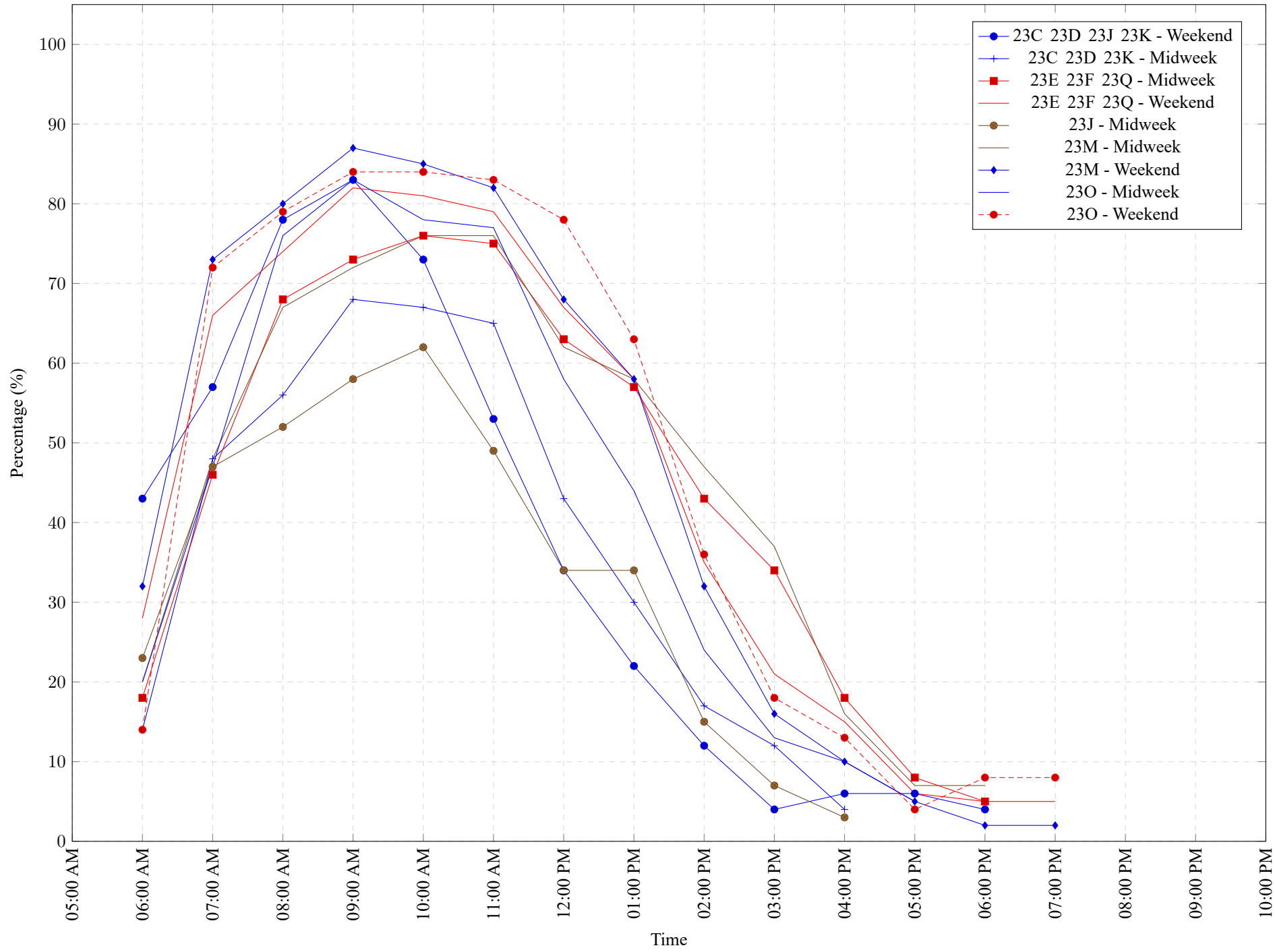


Table 7: Proportion of each day's fishing by hour.

Areas				Day Type	6:00 AM	7:00 AM	8:00 AM	9:00 AM	10:00 AM	11:00 AM	12:00 PM	01:00 PM	02:00 PM	03:00 PM	04:00 PM	05:00 PM	06:00 PM	07:00 PM	08:00 PM	09:00 PM	10:00 PM
23C	23D	23J	23K	Weekend	43%	57%	78%	83%	73%	53%	34%	22%	12%	4%	6%	6%	4%	0%	0%	0%	0%
23C	23D	23K		Midweek	14%	48%	56%	68%	67%	65%	43%	30%	17%	12%	4%	0%	0%	0%	0%	0%	0%
23E	23F	23Q		Midweek	18%	46%	68%	73%	76%	75%	63%	57%	43%	34%	18%	8%	5%	0%	0%	0%	0%
23E	23F	23Q		Weekend	28%	66%	74%	82%	81%	79%	67%	58%	35%	21%	15%	6%	5%	5%	0%	0%	0%
	23J			Midweek	23%	47%	52%	58%	62%	49%	34%	34%	15%	7%	3%	0%	0%	0%	0%	0%	0%
	23M			Midweek	20%	48%	67%	72%	76%	76%	62%	58%	47%	37%	16%	7%	7%	0%	0%	0%	0%
	23M			Weekend	32%	73%	80%	87%	85%	82%	68%	58%	32%	16%	10%	5%	2%	2%	0%	0%	0%
	23O			Midweek	20%	47%	76%	83%	78%	77%	58%	44%	24%	13%	10%	5%	0%	0%	0%	0%	0%
	23O			Weekend	14%	72%	79%	84%	84%	83%	78%	63%	36%	18%	13%	4%	8%	8%	0%	0%	0%

**Table 8: Daily Fishing Conditions.**

Date	Day Type	China Creek	Clutesi Ramp	Eagle Marine (Fuel Dock)	Harbour Quay - Derby Only	Island West	McKay Bay Gas Dock	Mills Landing	Poett Nook	Ucluelet Gov Dock
29 Aug 2022	Midweek		calm/rippled							
30 Aug 2022	Midweek					choppy		calm/rippled		
31 Aug 2022	Midweek						frequent whitecaps			choppy
01 Sep 2022	Midweek			calm/rippled						
02 Sep 2022	Midweek					calm/rippled	choppy			choppy
03 Sep 2022	Weekend	frequent whitecaps				frequent whitecaps	choppy			choppy
04 Sep 2022	Weekend	frequent whitecaps			frequent whitecaps		large swells			choppy
05 Sep 2022	Weekend	choppy			calm/rippled		choppy			
06 Sep 2022	Midweek	frequent whitecaps				choppy		choppy		
07 Sep 2022	Midweek		frequent whitecaps							
08 Sep 2022	Midweek								choppy	choppy
09 Sep 2022	Midweek							choppy		calm/rippled
10 Sep 2022	Weekend			choppy						
11 Sep 2022	Weekend		choppy			frequent whitecaps				
12 Sep 2022	Midweek					choppy	choppy			
13 Sep 2022	Midweek			calm/rippled			choppy			
14 Sep 2022	Midweek									calm/rippled
15 Sep 2022	Midweek	calm/rippled						choppy		calm/rippled
16 Sep 2022	Midweek		calm/rippled						frequent whitecaps	
17 Sep 2022	Weekend							frequent whitecaps		calm/rippled
18 Sep 2022	Weekend		calm/rippled				calm/rippled			
19 Sep 2022	Midweek	frequent whitecaps								
20 Sep 2022	Midweek		frequent whitecaps				frequent whitecaps			
21 Sep 2022	Midweek	choppy		calm/rippled						
22 Sep 2022	Midweek									
23 Sep 2022	Midweek		choppy				choppy			
24 Sep 2022	Weekend						calm/rippled			
25 Sep 2022	Weekend		choppy							
26 Sep 2022	Midweek		calm/rippled							
27 Sep 2022	Midweek									
28 Sep 2022	Midweek									
29 Sep 2022	Midweek									
30 Sep 2022	Midweek									
01 Oct 2022	Weekend									
02 Oct 2022	Weekend									
03 Oct 2022	Midweek									