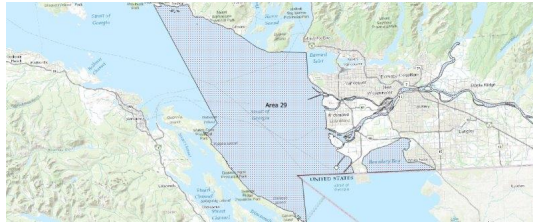


FISHERIES AND OCEANS CANADA

SOUTH COAST ASSESSMENT BULLETIN

CREEL SURVEY DATA REVIEW PACKAGE

Area 29 September 2022



Prepared By:

South Coast Salmon Stock Assessment Section

Thursday 19th January, 2023



Fisheries and Oceans
Canada

Pêches et Océans
Canada



Table 1: Numbers of Interviews conducted contributing to the area by day and access site.

		Crofton Ramp	Gibson's Marina		Ladysmith		McDon- ald Beach	Planetarium		Sewell's West		Squamish Boat Launch	Thunderbird Marina	
Date	Day Type	PM	AM	PM	AM	PM	PM	AM	PM	AM	PM	PM	AM	PM
29 Aug 2022	Midweek	1												
30 Aug 2022	Midweek													
31 Aug 2022	Midweek													
01 Sep 2022	Midweek							1						
02 Sep 2022	Midweek			8										
03 Sep 2022	Weekend				1					1				
04 Sep 2022	Weekend													
05 Sep 2022	Weekend			13										
06 Sep 2022	Midweek										3			
07 Sep 2022	Midweek													
08 Sep 2022	Midweek													
09 Sep 2022	Midweek													
10 Sep 2022	Weekend					4	27							
11 Sep 2022	Weekend		1						13					
12 Sep 2022	Midweek													
13 Sep 2022	Midweek													
14 Sep 2022	Midweek		2				8							
15 Sep 2022	Midweek					4							4	
16 Sep 2022	Midweek													
17 Sep 2022	Weekend			2		3		6						
18 Sep 2022	Weekend												1	
19 Sep 2022	Midweek													
20 Sep 2022	Midweek													
21 Sep 2022	Midweek													3
22 Sep 2022	Midweek													
23 Sep 2022	Midweek												3	
24 Sep 2022	Weekend	4										1		
25 Sep 2022	Weekend									2				
26 Sep 2022	Midweek													
27 Sep 2022	Midweek									2				
28 Sep 2022	Midweek													
29 Sep 2022	Midweek							2						
30 Sep 2022	Midweek	1												
01 Oct 2022	Weekend													
02 Oct 2022	Weekend													1
03 Oct 2022	Midweek													

Table 2: Daily tally of interviews, catch and effort.

Date	Day	Average Fishing Conditions	Interviews & Log Trips	Chinook	Coho	Sockeye	Halibut	Observed Fishing	Flight Time	Expanded Fishing
29-Aug-2022	Monday	calm/rippled	2	1				39	1207	74
30-Aug-2022	Tuesday		0							
31-Aug-2022	Wednesday		2							
01-Sep-2022	Thursday	choppy	6	17	2			131	1250	350
02-Sep-2022	Friday	calm/rippled	11	16						
03-Sep-2022	Saturday	frequent whitecaps	4	12				193	1318	289
04-Sep-2022	Sunday		0							
05-Sep-2022	Monday (Labour Day)	choppy	18	35	5					
06-Sep-2022	Tuesday	calm/rippled	4	12						
07-Sep-2022	Wednesday		0					0	1244	0
08-Sep-2022	Thursday		0							
09-Sep-2022	Friday		0							
10-Sep-2022	Saturday	choppy	31	25	3	2		259	1318	385
11-Sep-2022	Sunday	calm/rippled	19	28	1					
12-Sep-2022	Monday		3	7				127	1310	346
13-Sep-2022	Tuesday		3	6	1					
14-Sep-2022	Wednesday	calm/rippled	11	8	3					
15-Sep-2022	Thursday	choppy	10	5		8				
16-Sep-2022	Friday		1	2						
17-Sep-2022	Saturday	choppy	11	2	3	1				
18-Sep-2022	Sunday	calm/rippled	1	4	1			14	1301	19
19-Sep-2022	Monday		1	2						
20-Sep-2022	Tuesday		0							
21-Sep-2022	Wednesday	choppy	3	2	4			79	1310	211
22-Sep-2022	Thursday		0							
23-Sep-2022	Friday	choppy	4	7	2	4				
24-Sep-2022	Saturday	choppy	5		1	1				
25-Sep-2022	Sunday	calm/rippled	2	1				137	1315	203
26-Sep-2022	Monday		0							
27-Sep-2022	Tuesday	calm/rippled	3		2	2				
28-Sep-2022	Wednesday		0							
29-Sep-2022	Thursday	calm/rippled	2		1	1				
30-Sep-2022	Friday	calm/rippled	1							
01-Oct-2022	Saturday		0							
02-Oct-2022	Sunday	calm/rippled	1		2					
03-Oct-2022	Monday		0							
	Totals	calm/rippled	63	84	15	15		84*		227*
	Totals	choppy	91	107	14	4		151*		224*

* Average number of boats Observed and Expanded

Table 3: Simple area based cpue (catch per boat trip) expansion.

Day Type	Average Expanded Boats	Number of Days	Total Estimated Effort	CPUE				Retained			
				Chinook	Coho	Sockeye	Halibut	Chinook	Coho	Sockeye	Halibut
Midweek	227	21	4767	1.333	0.238	0.238		6354	1135	1135	
Weekend	224	9	2016	1.176	0.154	0.044		2371	310	89	

Table 4: Recent years estimates of retained catch and effort.

Year	Month	Total Effort	Chinook Kept	Coho Kept	Sockeye Kept	Halibut Kept
2017	September	5028	3056	133		
2018	September	9577	415	579	20815	
2019	September	4017	2674	251		0
2020	September	5803	3042	498	0	0
2021	September	2925	433	110	0	0
2022	September	7037	7869	1618	739	0
5-Yr Avg	September	5470	1924	314	6938	0

Table 5: Sport Head Recovery Review.

Species	Creel Marked Catch	Creel Mark Rate	Creel Submission Rate	iRec Marked Catch	iRec Mark Rate	iRec Submission Rate	Sport Head Recoveries
Coho	1065	66%	1%	650	86%	1%	8
Chinook	182	2%	2%	1002	18%	0%	3

Table 6: Guided Proprtions Review.

Data Source	Interviews / Angler Days	Guided Proportion
Creel Interivews	154	10%
iRec Anglers	8050	9%

Figure 1: Proportion of each day's fishing by hour.

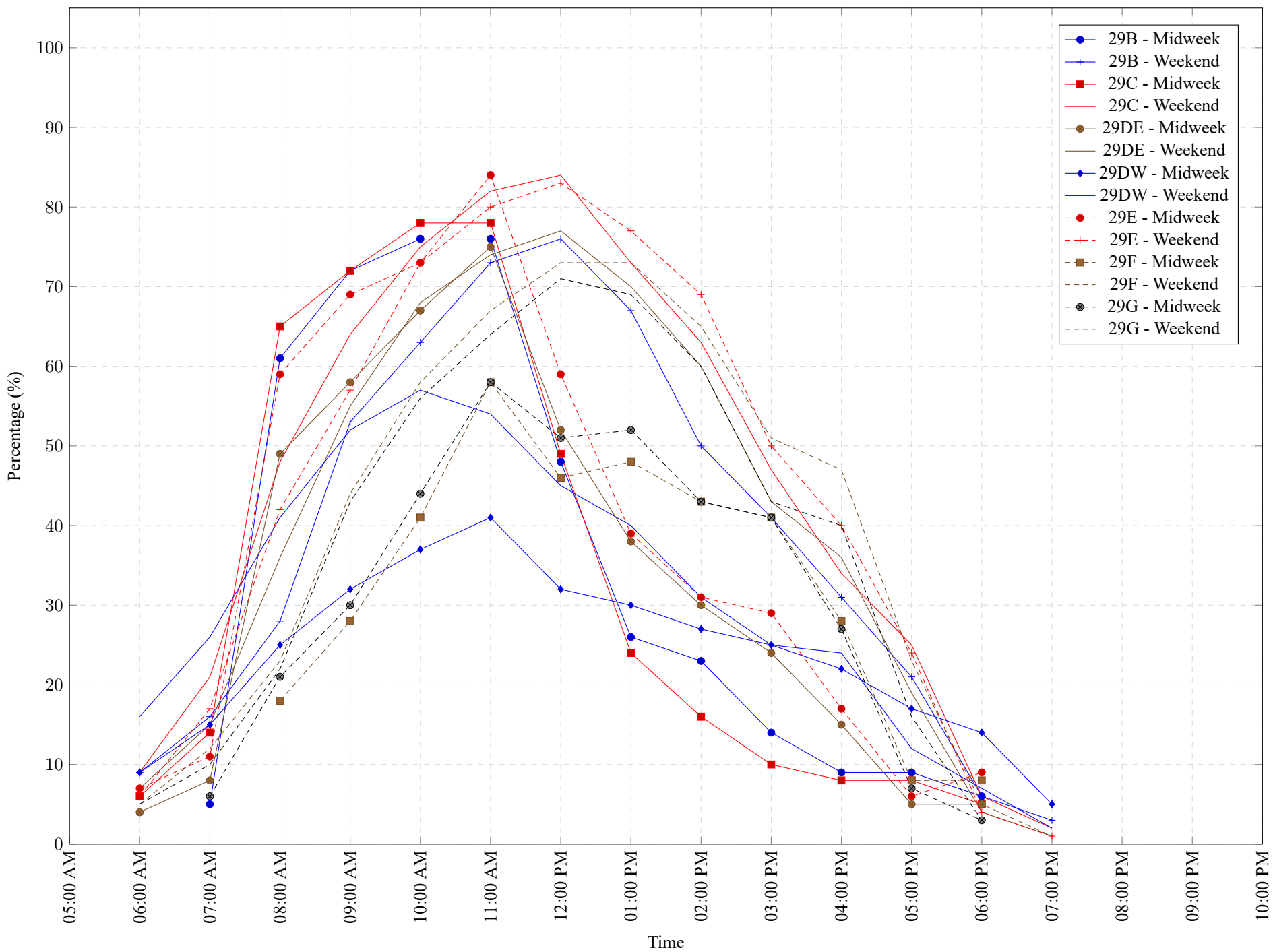


Table 7: Proportion of each day's fishing by hour.

Areas	Day Type	6:00 AM	7:00 AM	8:00 AM	9:00 AM	10:00 AM	11:00 AM	12:00 PM	01:00 PM	02:00 PM	03:00 PM	04:00 PM	05:00 PM	06:00 PM	07:00 PM	08:00 PM	09:00 PM	10:00 PM
29B	Midweek	0%	5%	61%	72%	76%	76%	48%	26%	23%	14%	9%	9%	6%	0%	0%	0%	0%
29B	Weekend	9%	16%	28%	53%	63%	73%	76%	67%	50%	41%	31%	21%	6%	3%	0%	0%	0%
29C	Midweek	6%	14%	65%	72%	78%	78%	49%	24%	16%	10%	8%	8%	5%	0%	0%	0%	0%
29C	Weekend	9%	21%	48%	64%	75%	82%	84%	73%	63%	47%	34%	25%	6%	2%	0%	0%	0%
29DE	Midweek	4%	8%	49%	58%	67%	75%	52%	38%	30%	24%	15%	5%	5%	0%	0%	0%	0%
29DE	Weekend	7%	15%	36%	55%	68%	74%	77%	70%	60%	43%	36%	19%	4%	1%	0%	0%	0%
29DW	Midweek	9%	15%	25%	32%	37%	41%	32%	30%	27%	25%	22%	17%	14%	5%	0%	0%	0%
29DW	Weekend	16%	26%	41%	52%	57%	54%	45%	40%	31%	25%	24%	12%	7%	2%	0%	0%	0%
29E	Midweek	7%	11%	59%	69%	73%	84%	59%	39%	31%	29%	17%	6%	9%	0%	0%	0%	0%
29E	Weekend	6%	17%	42%	57%	73%	80%	83%	77%	69%	50%	40%	24%	4%	1%	0%	0%	0%
29F	Midweek	0%	0%	18%	28%	41%	58%	46%	48%	43%	41%	28%	8%	8%	0%	0%	0%	0%
29F	Weekend	5%	12%	23%	44%	58%	67%	73%	73%	65%	51%	47%	23%	5%	1%	0%	0%	0%
29G	Midweek	0%	6%	21%	30%	44%	58%	51%	52%	43%	41%	27%	7%	3%	0%	0%	0%	0%
29G	Weekend	5%	10%	22%	43%	56%	64%	71%	69%	60%	43%	40%	16%	3%	0%	0%	0%	0%

Table 8: Daily Fishing Conditions.

Date	Day Type	Crofton Ramp	Gibson's Marina	Ladysmith	McDonald Beach	Planetarium	Sewell's West	Squamish Boat Launch	Thunderbird Marina
29 Aug 2022	Midweek	calm/rippled							
30 Aug 2022	Midweek								
31 Aug 2022	Midweek								
01 Sep 2022	Midweek					choppy			
02 Sep 2022	Midweek		calm/rippled						
03 Sep 2022	Weekend			frequent whitecaps			frequent whitecaps		
04 Sep 2022	Weekend								
05 Sep 2022	Weekend		choppy						
06 Sep 2022	Midweek						calm/rippled		
07 Sep 2022	Midweek								
08 Sep 2022	Midweek								
09 Sep 2022	Midweek								
10 Sep 2022	Weekend			calm/rippled	choppy				
11 Sep 2022	Weekend		choppy			calm/rippled			
12 Sep 2022	Midweek								
13 Sep 2022	Midweek								
14 Sep 2022	Midweek		calm/rippled		calm/rippled				
15 Sep 2022	Midweek			choppy					choppy
16 Sep 2022	Midweek								
17 Sep 2022	Weekend		frequent whitecaps	calm/rippled		choppy			
18 Sep 2022	Weekend								calm/rippled
19 Sep 2022	Midweek								
20 Sep 2022	Midweek								
21 Sep 2022	Midweek								choppy
22 Sep 2022	Midweek								
23 Sep 2022	Midweek								choppy
24 Sep 2022	Weekend	choppy						calm/rippled	
25 Sep 2022	Weekend						calm/rippled		
26 Sep 2022	Midweek								
27 Sep 2022	Midweek						calm/rippled		
28 Sep 2022	Midweek								
29 Sep 2022	Midweek					calm/rippled			
30 Sep 2022	Midweek	calm/rippled							
01 Oct 2022	Weekend								
02 Oct 2022	Weekend								calm/rippled
03 Oct 2022	Midweek								