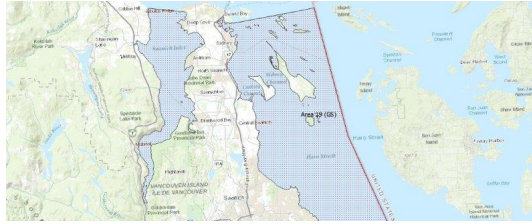


FISHERIES AND OCEANS CANADA

SOUTH COAST ASSESSMENT BULLETIN

CREEL SURVEY DATA REVIEW PACKAGE

Area 19 (GS) October 2022



Prepared By:

South Coast Salmon Stock Assessment Section

Thursday 19th January, 2023



Fisheries and Oceans
Canada

Pêches et Océans
Canada



Table 1: Numbers of Interviews conducted contributing to the area by day and access site.

Date	Day Type	Mill Bay		Sidney	
		AM	PM	AM	PM
28 Sep 2022	Midweek				1
29 Sep 2022	Midweek				
30 Sep 2022	Midweek		2		
01 Oct 2022	Weekend			3	
02 Oct 2022	Weekend				
03 Oct 2022	Midweek		4		3
04 Oct 2022	Midweek				
05 Oct 2022	Midweek				
06 Oct 2022	Midweek				
07 Oct 2022	Midweek				4
08 Oct 2022	Weekend	3		1	
09 Oct 2022	Weekend				9
10 Oct 2022	Weekend				
11 Oct 2022	Midweek				
12 Oct 2022	Midweek				
13 Oct 2022	Midweek			5	
14 Oct 2022	Midweek				
15 Oct 2022	Weekend				8
16 Oct 2022	Weekend		10		
17 Oct 2022	Midweek				
18 Oct 2022	Midweek	3			
19 Oct 2022	Midweek				1
20 Oct 2022	Midweek				
21 Oct 2022	Midweek				
22 Oct 2022	Weekend				
23 Oct 2022	Weekend				
24 Oct 2022	Midweek			1	
25 Oct 2022	Midweek				
26 Oct 2022	Midweek				
27 Oct 2022	Midweek				
28 Oct 2022	Midweek				
29 Oct 2022	Weekend				
30 Oct 2022	Weekend		1		
31 Oct 2022	Midweek				
01 Nov 2022	Midweek				
02 Nov 2022	Midweek				
03 Nov 2022	Midweek				

Table 2: Daily tally of interviews, catch and effort.

Date	Day	Average Fishing Conditions	Interviews & Log Trips	Chinook	Coho	Sockeye	Halibut	Observed Fishing	Flight Time	Expanded Fishing
28-Sep-2022	Wednesday	choppy	1							
29-Sep-2022	Thursday		0							
30-Sep-2022	Friday	calm/rippled	2							
01-Oct-2022	Saturday	calm/rippled	3					6	1026	16
02-Oct-2022	Sunday		0							
03-Oct-2022	Monday	calm/rippled	7		1					
04-Oct-2022	Tuesday		0					1	1110	2
05-Oct-2022	Wednesday		0							
06-Oct-2022	Thursday		0							
07-Oct-2022	Friday	calm/rippled	4	1						
08-Oct-2022	Saturday	calm/rippled	4		1					
09-Oct-2022	Sunday	calm/rippled	9	1	2					
10-Oct-2022	Monday		0							
	(Thanksgiving)									
11-Oct-2022	Tuesday		0							
12-Oct-2022	Wednesday		0					1	1029	2
13-Oct-2022	Thursday	calm/rippled	5		1					
14-Oct-2022	Friday		0					5	1023	12
15-Oct-2022	Saturday	calm/rippled	8							
16-Oct-2022	Sunday	calm/rippled	10					9	1028	25
17-Oct-2022	Monday		0					0	1027	0
18-Oct-2022	Tuesday	calm/rippled	3							
19-Oct-2022	Wednesday	calm/rippled	1							
20-Oct-2022	Thursday		0							
21-Oct-2022	Friday		0							
22-Oct-2022	Saturday		2					3	1025	8
23-Oct-2022	Sunday		0							
24-Oct-2022	Monday	frequent whitecaps	1							
25-Oct-2022	Tuesday		0							
26-Oct-2022	Wednesday		0					2	1027	4
27-Oct-2022	Thursday		0							
28-Oct-2022	Friday		0							
29-Oct-2022	Saturday		0							
30-Oct-2022	Sunday	frequent whitecaps	1					0	1007	0
31-Oct-2022	Monday		0							
01-Nov-2022	Tuesday		0							
02-Nov-2022	Wednesday		0							
03-Nov-2022	Thursday		0							
	Totals	calm/rippled	21	1	2			2*		4*
	Totals	calm/rippled	37	1	3			5*		12*

* Average number of boats Observed and Expanded

Table 3: Simple area based cpue (catch per boat trip) expansion.

Day Type	Average Expanded Boats	Number of Days	Total Estimated Effort	CPUE				Retained			
				Chinook	Coho	Sockeye	Halibut	Chinook	Coho	Sockeye	Halibut
Weekend	12	11	132	0.027	0.081			4	11		
Midweek	4	20	80	0.048	0.095			4	8		

Table 4: Recent years estimates of retained catch and effort.

Year	Month	Total Effort	Chinook Kept	Coho Kept	Sockeye Kept	Halibut Kept
2017	October	162	2	2		
2018	October	251	105	1		6
2019	October	45	2			0
2020	October	214	11			0
2021	October	114	2			0
2022	October	173	11	23		0
5-Yr Avg	October	157	24	2		2

Table 5: Sport Head Recovery Review.

Species	Creel Marked Catch	Creel Mark Rate	Creel Submission Rate	iRec Marked Catch	iRec Mark Rate	iRec Submission Rate	Sport Head Recoveries
---------	--------------------	-----------------	-----------------------	-------------------	----------------	----------------------	-----------------------

Table 6: Guided Proprtions Review.

Data Source	Interviews / Angler Days	Guided Proportion
Creel Interivews	58	1%
iRec Anglers	87	6%

Figure 1: Proportion of each day's fishing by hour.

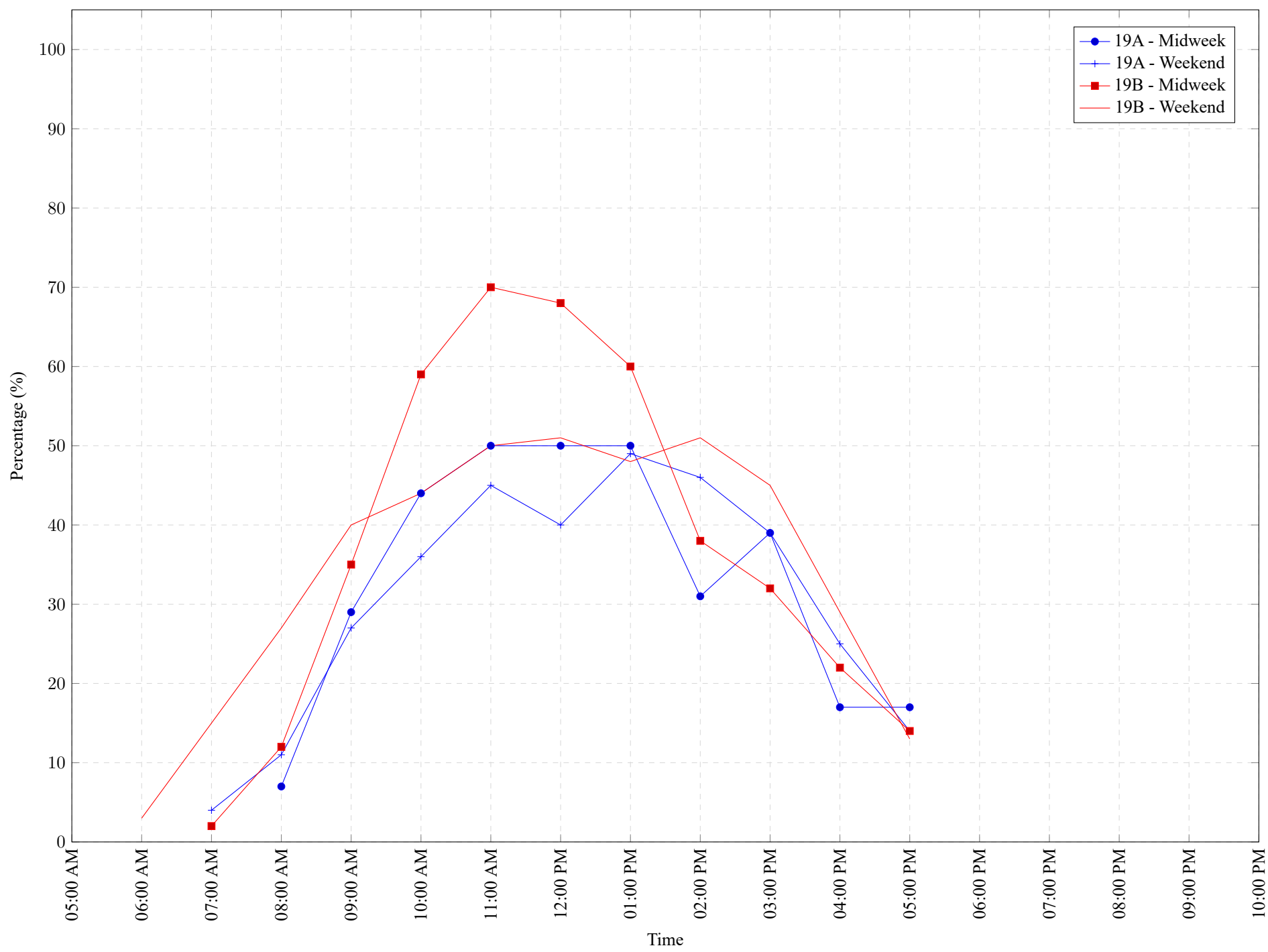


Table 7: Proportion of each day's fishing by hour.

Areas	Day Type	6:00 AM	7:00 AM	8:00 AM	9:00 AM	10:00 AM	11:00 AM	12:00 PM	01:00 PM	02:00 PM	03:00 PM	04:00 PM	05:00 PM	06:00 PM	07:00 PM	08:00 PM	09:00 PM	10:00 PM
19A	Midweek	0%	0%	7%	29%	44%	50%	50%	50%	31%	39%	17%	17%	0%	0%	0%	0%	0%
19A	Weekend	0%	4%	11%	27%	36%	45%	40%	49%	46%	39%	25%	14%	0%	0%	0%	0%	0%
19B	Midweek	0%	2%	12%	35%	59%	70%	68%	60%	38%	32%	22%	14%	0%	0%	0%	0%	0%
19B	Weekend	3%	15%	27%	40%	44%	50%	51%	48%	51%	45%	29%	13%	0%	0%	0%	0%	0%

Table 8: Daily Fishing Conditions.

Date	Day Type	Mill Bay	Sidney
28 Sep 2022	Midweek		choppy
29 Sep 2022	Midweek		
30 Sep 2022	Midweek	calm/rippled	
01 Oct 2022	Weekend		calm/rippled
02 Oct 2022	Weekend		
03 Oct 2022	Midweek	calm/rippled	calm/rippled
04 Oct 2022	Midweek		
05 Oct 2022	Midweek		
06 Oct 2022	Midweek		
07 Oct 2022	Midweek		calm/rippled
08 Oct 2022	Weekend	calm/rippled	calm/rippled
09 Oct 2022	Weekend		calm/rippled
10 Oct 2022	Weekend		
11 Oct 2022	Midweek		
12 Oct 2022	Midweek		
13 Oct 2022	Midweek		calm/rippled
14 Oct 2022	Midweek		
15 Oct 2022	Weekend		calm/rippled
16 Oct 2022	Weekend	calm/rippled	
17 Oct 2022	Midweek		
18 Oct 2022	Midweek	calm/rippled	
19 Oct 2022	Midweek		calm/rippled
20 Oct 2022	Midweek		
21 Oct 2022	Midweek		
22 Oct 2022	Weekend		
23 Oct 2022	Weekend		
24 Oct 2022	Midweek		frequent whitecaps
25 Oct 2022	Midweek		
26 Oct 2022	Midweek		
27 Oct 2022	Midweek		
28 Oct 2022	Midweek		
29 Oct 2022	Weekend		
30 Oct 2022	Weekend	frequent whitecaps	
31 Oct 2022	Midweek		
01 Nov 2022	Midweek		
02 Nov 2022	Midweek		
03 Nov 2022	Midweek		