

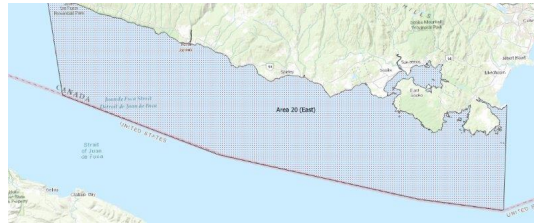
# FISHERIES AND OCEANS CANADA

## SOUTH COAST ASSESSMENT BULLETIN

### CREEL SURVEY DATA REVIEW PACKAGE

---

## Area 20 (East) October 2022



---

*Prepared By:*  
South Coast Salmon Stock Assessment Section

Thursday 19<sup>th</sup> January, 2023



Fisheries and Oceans  
Canada

Pêches et Océans  
Canada



**Table 1: Numbers of Interviews conducted contributing to the area by day and access site.**

Date	Day Type	Becher Bay	Cattle Point	Flemming		Pedder Bay		Prestige Hotel Ramp		Sooke Harbour Marina	
		PM	PM	AM	PM	AM	PM	AM	PM	AM	PM
28 Sep 2022	Midweek	5									2
29 Sep 2022	Midweek										
30 Sep 2022	Midweek										6
01 Oct 2022	Weekend		1								
02 Oct 2022	Weekend				6	34		33			27
03 Oct 2022	Midweek										
04 Oct 2022	Midweek										6
05 Oct 2022	Midweek										
06 Oct 2022	Midweek				2				16		
07 Oct 2022	Midweek					13					16
08 Oct 2022	Weekend										
09 Oct 2022	Weekend					15	34	28			
10 Oct 2022	Weekend			1							
11 Oct 2022	Midweek										
12 Oct 2022	Midweek										
13 Oct 2022	Midweek										
14 Oct 2022	Midweek						10		26		
15 Oct 2022	Weekend										
16 Oct 2022	Weekend			1			28				2
17 Oct 2022	Midweek										
18 Oct 2022	Midweek										1
19 Oct 2022	Midweek										
20 Oct 2022	Midweek						6	8			
21 Oct 2022	Midweek										
22 Oct 2022	Weekend				2				7	3	
23 Oct 2022	Weekend			2		15					
24 Oct 2022	Midweek										
25 Oct 2022	Midweek										
26 Oct 2022	Midweek							2			
27 Oct 2022	Midweek										
28 Oct 2022	Midweek										
29 Oct 2022	Weekend										6
30 Oct 2022	Weekend										
31 Oct 2022	Midweek										
01 Nov 2022	Midweek										
02 Nov 2022	Midweek										
03 Nov 2022	Midweek										

Table 2: Daily tally of interviews, catch and effort.

Date	Day	Average Fishing Conditions	Interviews & Log Trips	Chinook	Coho	Sockeye	Halibut	Observed Fishing	Flight Time	Expanded Fishing
28-Sep-2022	Wednesday	choppy	2	1	3					
29-Sep-2022	Thursday	frequent whitecaps	5		7					
30-Sep-2022	Friday	calm/rippled	6	1	8		1			
01-Oct-2022	Saturday	choppy	34	1	136			253	1024	439
02-Oct-2022	Sunday	calm/rippled	67	5	222		1			
03-Oct-2022	Monday		1		4					
04-Oct-2022	Tuesday	frequent whitecaps	6	1	35			56	1110	76
05-Oct-2022	Wednesday	choppy	16		29					
06-Oct-2022	Thursday	calm/rippled	2		7					
07-Oct-2022	Friday	calm/rippled	30	1	82					
08-Oct-2022	Saturday	choppy	35	7	92					
09-Oct-2022	Sunday	calm/rippled	44	3	60					
10-Oct-2022	Monday	choppy	1							
	(Thanksgiving)									
11-Oct-2022	Tuesday		1		1					
12-Oct-2022	Wednesday		0					53	1026	77
13-Oct-2022	Thursday		1		1					
14-Oct-2022	Friday	calm/rippled	37	13	45			93	1022	134
15-Oct-2022	Saturday	frequent whitecaps	28	4	29					
16-Oct-2022	Sunday	calm/rippled	3	3	5			107	1029	186
17-Oct-2022	Monday	calm/rippled	1					30	1028	43
18-Oct-2022	Tuesday		0							
19-Oct-2022	Wednesday		0							
20-Oct-2022	Thursday	choppy	15	13	14					
21-Oct-2022	Friday		0							
22-Oct-2022	Saturday	calm/rippled	12		11			33	1027	58
23-Oct-2022	Sunday	calm/rippled	17		1		4			
24-Oct-2022	Monday		0							
25-Oct-2022	Tuesday		0							
26-Oct-2022	Wednesday	calm/rippled	2		5			5	1028	7
27-Oct-2022	Thursday		0							
28-Oct-2022	Friday		0							
29-Oct-2022	Saturday	calm/rippled	6	1	3					
30-Oct-2022	Sunday		0							
31-Oct-2022	Monday		0							
01-Nov-2022	Tuesday		0							
02-Nov-2022	Wednesday		0							
03-Nov-2022	Thursday		0							
	Totals	choppy	112	28	223			47*		67*
	Totals	choppy	247	24	559		5	131*		228*

\* Average number of boats Observed and Expanded

**Table 3: Simple area based cpue (catch per boat trip) expansion.**

Day Type	Average Expanded Boats	Number of Days	Total Estimated Effort	CPUE				Retained			
				Chinook	Coho	Sockeye	Halibut	Chinook	Coho	Sockeye	Halibut
Weekend	228	11	2508	0.097	2.263		0.02	243	5676		50
Midweek	67	20	1340	0.25	1.991			335	2668		

**Table 4: Recent years estimates of retained catch and effort.**

Year	Month	Total Effort	Chinook Kept	Coho Kept	Sockeye Kept	Halibut Kept
2017	October	1001	161	943		
2018	October	2684	542	2267		
2019	October	1655	48	2242		24
2020	October	2374	312	3319		111
2021	October	2184	259	5713		37
2022	October	3824	730	9455		58
5-Yr Avg	October	1980	264	2897		57

**Table 5: Sport Head Recovery Review.**

Species	Creel Marked Catch	Creel Mark Rate	Creel Submission Rate	iRec Marked Catch	iRec Mark Rate	iRec Submission Rate	Sport Head Recoveries
Coho	4208	45%	8%	3348	64%	10%	344
Chinook	428	60%	13%	199	48%	27%	54

**Table 6: Guided Proprtions Review.**

Data Source	Interviews / Angler Days	Guided Proportion
Creel Interivews	359	5%
iRec Anglers	451	13%
iRec Anglers	3505	10%

Figure 1: Proportion of each day's fishing by hour.

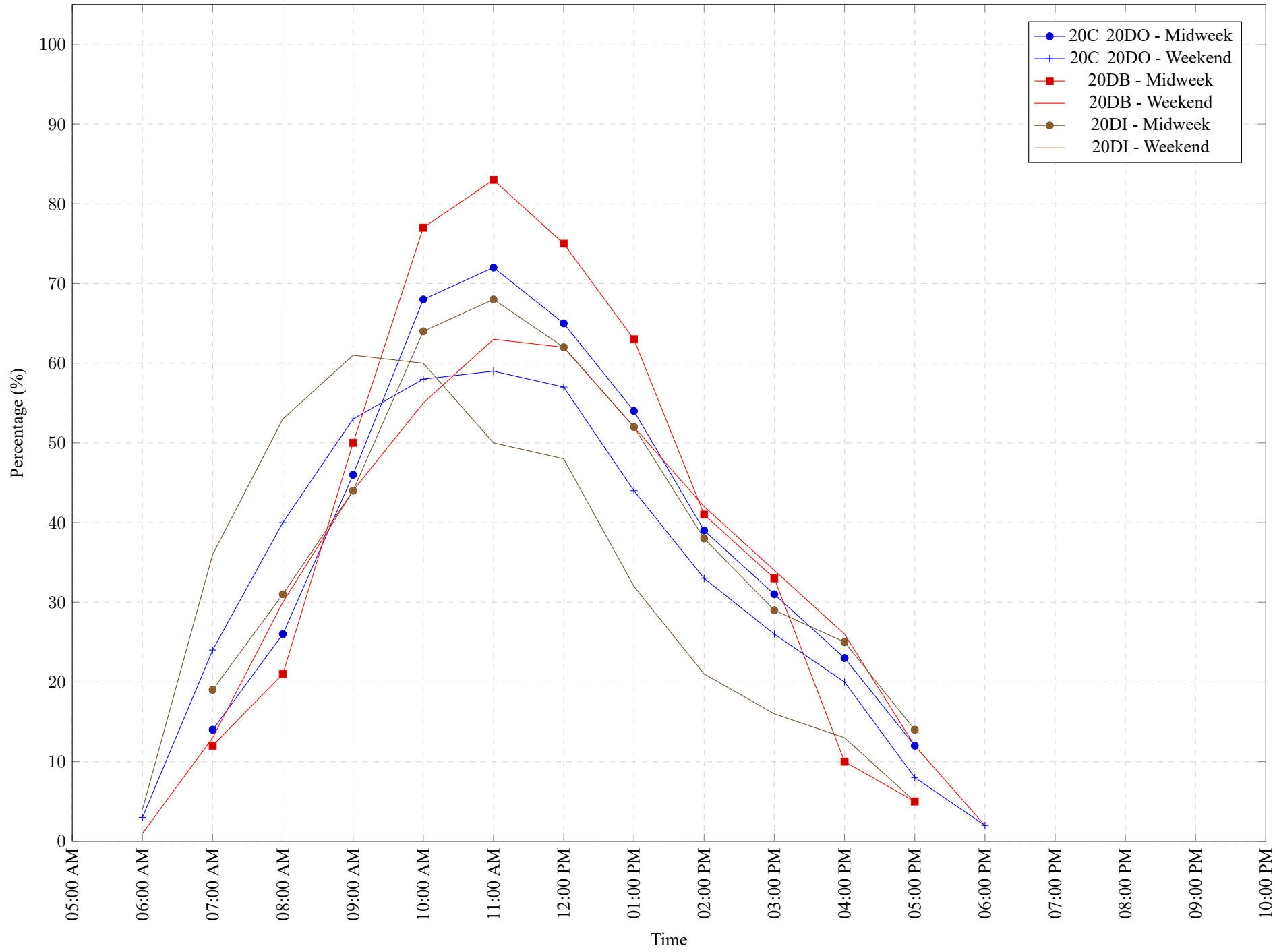


Table 7: Proportion of each day's fishing by hour.

Areas	Day Type	6:00	7:00	8:00	9:00	10:00	11:00	12:00	01:00	02:00	03:00	04:00	05:00	06:00	07:00	08:00	09:00	10:00
		AM	AM	AM	AM	AM	AM	PM	PM	PM	PM	PM	PM	PM	PM	PM	PM	PM
20C 20DO	Midweek	0%	14%	26%	46%	68%	72%	65%	54%	39%	31%	23%	12%	0%	0%	0%	0%	0%
20C 20DO	Weekend	3%	24%	40%	53%	58%	59%	57%	44%	33%	26%	20%	8%	2%	0%	0%	0%	0%
20DB	Midweek	0%	12%	21%	50%	77%	83%	75%	63%	41%	33%	10%	5%	0%	0%	0%	0%	0%
20DB	Weekend	1%	13%	30%	44%	55%	63%	62%	52%	42%	34%	26%	12%	2%	0%	0%	0%	0%
20DI	Midweek	0%	19%	31%	44%	64%	68%	62%	52%	38%	29%	25%	14%	0%	0%	0%	0%	0%
20DI	Weekend	4%	36%	53%	61%	60%	50%	48%	32%	21%	16%	13%	5%	0%	0%	0%	0%	0%

**Table 8: Daily Fishing Conditions.**

Date	Day Type	Becher Bay	Cattle Point	Flemming	Pedder Bay	Prestige Hotel Ramp	Sooke Harbour Marina
28 Sep 2022	Midweek	frequent whitecaps					choppy
29 Sep 2022	Midweek						
30 Sep 2022	Midweek						calm/rippled
01 Oct 2022	Weekend		calm/rippled			choppy	
02 Oct 2022	Weekend			calm/rippled	calm/rippled		calm/rippled
03 Oct 2022	Midweek						
04 Oct 2022	Midweek						frequent whitecaps
05 Oct 2022	Midweek					choppy	
06 Oct 2022	Midweek			calm/rippled			
07 Oct 2022	Midweek				calm/rippled		calm/rippled
08 Oct 2022	Weekend				choppy		
09 Oct 2022	Weekend				calm/rippled	calm/rippled	
10 Oct 2022	Weekend			choppy			
11 Oct 2022	Midweek						
12 Oct 2022	Midweek						
13 Oct 2022	Midweek						
14 Oct 2022	Midweek				calm/rippled	calm/rippled	
15 Oct 2022	Weekend				frequent whitecaps		
16 Oct 2022	Weekend			choppy			calm/rippled
17 Oct 2022	Midweek						calm/rippled
18 Oct 2022	Midweek						
19 Oct 2022	Midweek						
20 Oct 2022	Midweek				choppy	choppy	
21 Oct 2022	Midweek						
22 Oct 2022	Weekend			calm/rippled		choppy	calm/rippled
23 Oct 2022	Weekend			calm/rippled	calm/rippled		
24 Oct 2022	Midweek						
25 Oct 2022	Midweek						
26 Oct 2022	Midweek					calm/rippled	
27 Oct 2022	Midweek						
28 Oct 2022	Midweek						
29 Oct 2022	Weekend					calm/rippled	
30 Oct 2022	Weekend						
31 Oct 2022	Midweek						
01 Nov 2022	Midweek						
02 Nov 2022	Midweek						
03 Nov 2022	Midweek						