

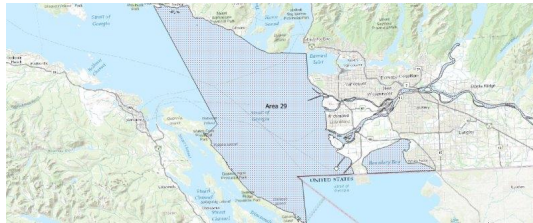
# FISHERIES AND OCEANS CANADA

## SOUTH COAST ASSESSMENT BULLETIN

### CREEL SURVEY DATA REVIEW PACKAGE

---

## Area 29 October 2022



---

*Prepared By:*

South Coast Salmon Stock Assessment Section

Thursday 19<sup>th</sup> January, 2023



Fisheries and Oceans  
Canada

Pêches et Océans  
Canada



**Table 1: Numbers of Interviews conducted contributing to the area by day and access site.**

Date	Day Type	Crofton Ramp	McDonald Beach		Planetar- ium	Sewell's West	Thunder- bird Marina
		PM	AM	PM	AM	PM	PM
28 Sep 2022	Midweek						
29 Sep 2022	Midweek				2		
30 Sep 2022	Midweek	1					
01 Oct 2022	Weekend						
02 Oct 2022	Weekend						1
03 Oct 2022	Midweek						
04 Oct 2022	Midweek						
05 Oct 2022	Midweek						
06 Oct 2022	Midweek						
07 Oct 2022	Midweek						
08 Oct 2022	Weekend					1	
09 Oct 2022	Weekend						
10 Oct 2022	Weekend						
11 Oct 2022	Midweek						
12 Oct 2022	Midweek						
13 Oct 2022	Midweek						
14 Oct 2022	Midweek					1	
15 Oct 2022	Weekend						
16 Oct 2022	Weekend						
17 Oct 2022	Midweek						
18 Oct 2022	Midweek						
19 Oct 2022	Midweek			1			
20 Oct 2022	Midweek						
21 Oct 2022	Midweek						
22 Oct 2022	Weekend						
23 Oct 2022	Weekend		2				
24 Oct 2022	Midweek						
25 Oct 2022	Midweek						
26 Oct 2022	Midweek						
27 Oct 2022	Midweek						
28 Oct 2022	Midweek						
29 Oct 2022	Weekend						
30 Oct 2022	Weekend						
31 Oct 2022	Midweek						
01 Nov 2022	Midweek						
02 Nov 2022	Midweek						
03 Nov 2022	Midweek						

Table 2: Daily tally of interviews, catch and effort.

Date	Day	Average Fishing Conditions	Interviews & Log Trips	Chinook	Coho	Sockeye	Halibut	Observed Fishing	Flight Time	Expanded Fishing
28-Sep-2022	Wednesday		0							
29-Sep-2022	Thursday	calm/rippled	2		1	1				
30-Sep-2022	Friday	calm/rippled	1							
01-Oct-2022	Saturday		0							
02-Oct-2022	Sunday	calm/rippled	1		2					
03-Oct-2022	Monday		0							
04-Oct-2022	Tuesday		0							
05-Oct-2022	Wednesday		0							
06-Oct-2022	Thursday		0							
07-Oct-2022	Friday		0							
08-Oct-2022	Saturday	calm/rippled	1							
09-Oct-2022	Sunday		0							
10-Oct-2022	Monday		0							
	(Thanksgiving)									
11-Oct-2022	Tuesday		0							
12-Oct-2022	Wednesday		0							
13-Oct-2022	Thursday		0							
14-Oct-2022	Friday	calm/rippled	1					11	1224	15
15-Oct-2022	Saturday		0							
16-Oct-2022	Sunday		0					86	1239	101
17-Oct-2022	Monday		0					6	1230	7
18-Oct-2022	Tuesday		0							
19-Oct-2022	Wednesday	calm/rippled	1	1						
20-Oct-2022	Thursday		0							
21-Oct-2022	Friday		0							
22-Oct-2022	Saturday		0					8	1237	10
23-Oct-2022	Sunday	choppy	2							
24-Oct-2022	Monday		0							
25-Oct-2022	Tuesday		0							
26-Oct-2022	Wednesday		0					1	1223	1
27-Oct-2022	Thursday		0							
28-Oct-2022	Friday		0							
29-Oct-2022	Saturday		0							
30-Oct-2022	Sunday		0					0	1151	0
31-Oct-2022	Monday		0							
01-Nov-2022	Tuesday		0							
02-Nov-2022	Wednesday		0							
03-Nov-2022	Thursday		0							
	Totals	calm/rippled	2	1				6*		8*
	Totals	calm/rippled	4		2			31*		37*

\* Average number of boats Observed and Expanded

**Table 3: Simple area based cpue (catch per boat trip) expansion.**

Day Type	Average Expanded Boats	Number of Days	Total Estimated Effort	CPUE				Retained			
				Chinook	Coho	Sockeye	Halibut	Chinook	Coho	Sockeye	Halibut
Midweek	8	20	160	0.5				80			
Weekend	37	11	407		0.5				204		

**Table 4: Recent years estimates of retained catch and effort.**

Year	Month	Total Effort	Chinook Kept	Coho Kept	Sockeye Kept	Halibut Kept
2017	October	118		93		
2022	October	584	60	109		0
5-Yr Avg	October	118		93		

**Table 5: Sport Head Recovery Review.**

Species	Creel Marked Catch	Creel Mark Rate	Creel Submission Rate	iRec Marked Catch	iRec Mark Rate	iRec Submission Rate	Sport Head Recoveries
Coho	109	100%	2%	205	82%	1%	2
Chinook	5	8%	20%	92	22%	1%	1

**Table 6: Guided Proprtions Review.**

Data Source	Interviews / Angler Days	Guided Proportion
Creel Interivews	6	33%
iRec Anglers	776	11%

Figure 1: Proportion of each day's fishing by hour.

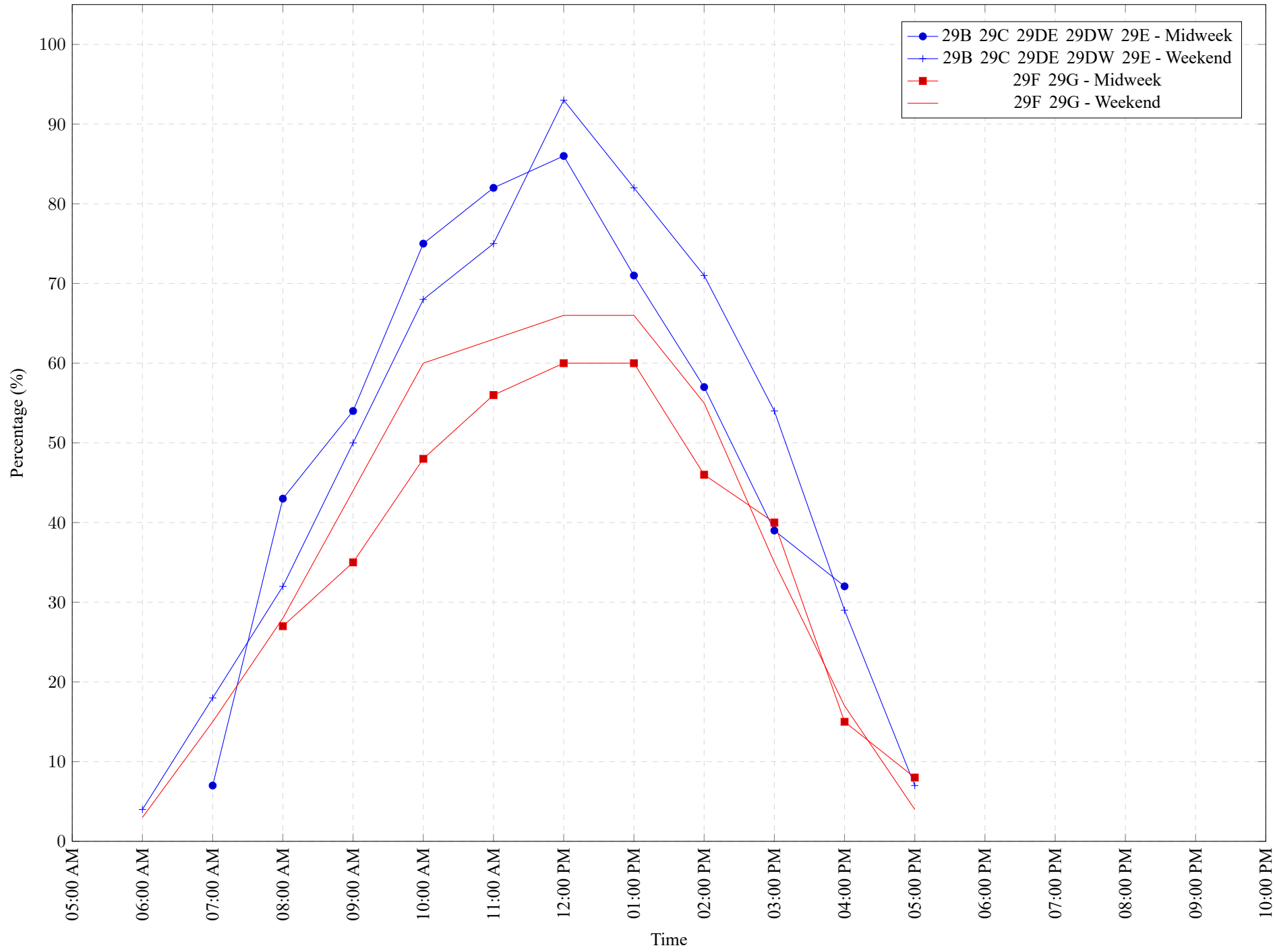


Table 7: Proportion of each day's fishing by hour.

Areas					Day Type	6:00 AM	7:00 AM	8:00 AM	9:00 AM	10:00 AM	11:00 AM	12:00 PM	01:00 PM	02:00 PM	03:00 PM	04:00 PM	05:00 PM	06:00 PM	07:00 PM	08:00 PM	09:00 PM	10:00 PM
29B	29C	29DE	29DW	29E	Midweek	0%	7%	43%	54%	75%	82%	86%	71%	57%	39%	32%	0%	0%	0%	0%	0%	0%
29B	29C	29DE	29DW	29E	Weekend	4%	18%	32%	50%	68%	75%	93%	82%	71%	54%	29%	7%	0%	0%	0%	0%	0%
29F 29G					Midweek	0%	0%	27%	35%	48%	56%	60%	60%	46%	40%	15%	8%	0%	0%	0%	0%	0%
29F 29G					Weekend	3%	15%	28%	44%	60%	63%	66%	66%	55%	35%	17%	4%	0%	0%	0%	0%	0%

**Table 8: Daily Fishing Conditions.**

Date	Day Type	Crofton Ramp	McDonald Beach	Planetarium	Sewell's West	Thunderbird Marina			
28 Sep 2022	Midweek	calm/rippled		calm/rippled					
29 Sep 2022	Midweek								
30 Sep 2022	Midweek								
01 Oct 2022	Weekend								
02 Oct 2022	Weekend	calm/rippled							
03 Oct 2022	Midweek								
04 Oct 2022	Midweek								
05 Oct 2022	Midweek								
06 Oct 2022	Midweek								
07 Oct 2022	Midweek								
08 Oct 2022	Weekend	calm/rippled							
09 Oct 2022	Weekend								
10 Oct 2022	Weekend								
11 Oct 2022	Midweek								
12 Oct 2022	Midweek								
13 Oct 2022	Midweek								
14 Oct 2022	Midweek	calm/rippled							
15 Oct 2022	Weekend								
16 Oct 2022	Weekend								
17 Oct 2022	Midweek								
18 Oct 2022	Midweek								
19 Oct 2022	Midweek	calm/rippled							
20 Oct 2022	Midweek								
21 Oct 2022	Midweek								
22 Oct 2022	Weekend	choppy							
23 Oct 2022	Weekend								
24 Oct 2022	Midweek								
25 Oct 2022	Midweek								
26 Oct 2022	Midweek								
27 Oct 2022	Midweek								
28 Oct 2022	Midweek								
29 Oct 2022	Weekend								
30 Oct 2022	Weekend								
31 Oct 2022	Midweek								
01 Nov 2022	Midweek								
02 Nov 2022	Midweek								
03 Nov 2022	Midweek								