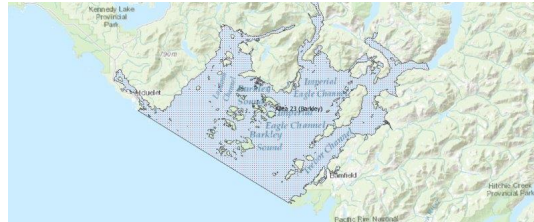


FISHERIES AND OCEANS CANADA

SOUTH COAST ASSESSMENT BULLETIN

CREEL SURVEY DATA REVIEW PACKAGE

Area 23 (Barkley) August 2023



Prepared By:

South Coast Salmon Stock Assessment Section

Saturday 13th January, 2024



Fisheries and Oceans
Canada

Pêches et Océans
Canada

**your
catch
counts**

Table 1: Numbers of Interviews conducted contributing to the area by day and access site.

		China Creek		Clutesi Marina		Clutesi Ramp			Harbour Quay - Derby Only	Island West		McKay Bay Gas Dock			Mills Landing			Pat Leslie Boat Launch		Poett Nook	Ucluelet Gov Dock		
Date	Day Type	AM	MD	AM	MD	AM	MD	PM	AM	MD	PM	AM	MD	PM	AM	MD	PM	MD	PM	MD	AM	MD	PM
29 Jul 2023	Weekend					1						8											7
30 Jul 2023	Weekend		1																		1		
31 Jul 2023	Midweek	4				1								11				1					
01 Aug 2023	Midweek																					9	
02 Aug 2023	Midweek						4					7											
03 Aug 2023	Midweek	1				1											5						1
04 Aug 2023	Midweek				4	3				8		10											
05 Aug 2023	Weekend		6					9															2
06 Aug 2023	Weekend																						
07 Aug 2023	Weekend					3																5	
08 Aug 2023	Midweek												16										
09 Aug 2023	Midweek																						
10 Aug 2023	Midweek		3			2													27		6	11	
11 Aug 2023	Midweek					3											6						
12 Aug 2023	Weekend												29									16	
13 Aug 2023	Weekend									2		18											
14 Aug 2023	Midweek		1														5					17	
15 Aug 2023	Midweek														14							15	
16 Aug 2023	Midweek																	5					
17 Aug 2023	Midweek										26												
18 Aug 2023	Midweek												28										22
19 Aug 2023	Weekend					1					14			28		20							
20 Aug 2023	Weekend									10				22									
21 Aug 2023	Midweek					5											10		2				
22 Aug 2023	Midweek						7							27									
23 Aug 2023	Midweek	3										21									3		
24 Aug 2023	Midweek										1												
25 Aug 2023	Midweek							5														12	
26 Aug 2023	Weekend							5													1		
27 Aug 2023	Weekend																11					2	
28 Aug 2023	Midweek		2													12					1		
29 Aug 2023	Midweek												32										
30 Aug 2023	Midweek			1		1						11										2	
31 Aug 2023	Midweek		2				5																3
01 Sep 2023	Midweek		5			4											10					2	
02 Sep 2023	Weekend	6							3				24									6	
03 Sep 2023	Weekend		5						1	6							13	3					

Table 2: Daily tally of interviews, catch and effort.

Date	Day	Average Fishing Conditions	Interviews & Log Trips	Chinook	Coho	Sockeye	Halibut	Observed Fishing	Flight Time	Expanded Fishing
29-Jul-2023	Saturday	calm/rippled	17	16	18			83	0731	131
30-Jul-2023	Sunday	choppy	3	3	1					
31-Jul-2023	Monday	calm/rippled	17	19	11			50	0725	79
01-Aug-2023	Tuesday	choppy	12	5	19					
02-Aug-2023	Wednesday	calm/rippled	14	23	5		1	73	0727	115
03-Aug-2023	Thursday	calm/rippled	12	23	15					
04-Aug-2023	Friday	choppy	28	39	22					
05-Aug-2023	Saturday	frequent whitecaps	21	33	21					
06-Aug-2023	Sunday		1					68	1052	101
07-Aug-2023	Monday (B.C. Day)	choppy	9	14	11					
08-Aug-2023	Tuesday	choppy	19	45	36			112	0733	176
09-Aug-2023	Wednesday		2	13	9					
10-Aug-2023	Thursday	choppy	46	76	42	1				
11-Aug-2023	Friday	calm/rippled	18	23	24		7			
12-Aug-2023	Saturday	choppy	48	98	93			209	0726	328
13-Aug-2023	Sunday	choppy	24	84	46					
14-Aug-2023	Monday	choppy	25	38	41		5			
15-Aug-2023	Tuesday	frequent whitecaps	31	73	42			245	0731	382
16-Aug-2023	Wednesday	large swells	8	15	3					
17-Aug-2023	Thursday	choppy	31	48	24		1			
18-Aug-2023	Friday	choppy	55	100	26					
19-Aug-2023	Saturday	choppy	43	48	18			288	0817	400
20-Aug-2023	Sunday	choppy	39	86	22					
21-Aug-2023	Monday	choppy	25	45	19					
22-Aug-2023	Tuesday	choppy	38	73	24					
23-Aug-2023	Wednesday	choppy	28	63	27					
24-Aug-2023	Thursday	calm/rippled	3	7	6			171	0924	256
25-Aug-2023	Friday	choppy	22	23	44					
26-Aug-2023	Saturday	choppy	6	3	3			224	0854	306
27-Aug-2023	Sunday	calm/rippled	13	19	15					
28-Aug-2023	Monday	calm/rippled	15	17	28			70	1023	111
29-Aug-2023	Tuesday	calm/rippled	35	61	31			38	1154	71
30-Aug-2023	Wednesday	calm/rippled	18	23	19					
31-Aug-2023	Thursday	choppy	10	11	7					
01-Sep-2023	Friday	choppy	24	31	26			121	0734	188
02-Sep-2023	Saturday	choppy	39	46	24			339	0727	521
03-Sep-2023	Sunday	frequent whitecaps	29	29	33					
	Totals	choppy	495	844	513	1	14	118*		185*
	Totals	choppy	204	385	229			197*		284*

* Average number of boats Observed and Expanded

Table 3: Simple area based cpue (catch per boat trip) expansion.

Day Type	Average Expanded Boats	Number of Days	Total Estimated Effort	CPUE				Retained			
				Chinook	Coho	Sockeye	Halibut	Chinook	Coho	Sockeye	Halibut
Midweek	185	22	4070	1.705	1.036	0.002	0.028	6939	4217	8	114
Weekend	284	9	2556	1.887	1.123			4823	2870		

Table 4: Recent years estimates of retained catch and effort.

Year	Month	Total Effort	Chinook Kept	Coho Kept	Sockeye Kept	Halibut Kept
2018	August	6703	6760	2877	94	
2019	August	7114	6830	4400		91
2020	August	5499	6816	1288		18
2021	August	6869	11005	2782	0	0
2022	August	6605	7356	3940		16
2023	August	7851	13544	6046	15	33
5-Yr Avg	August	6558	7753	3057	47	31

Table 5: Sport Head Recovery Review.

Species	Creel Marked Catch	Creel Mark Rate	Creel Submission Rate	iRec Marked Catch	iRec Mark Rate	iRec Submission Rate	Sport Head Recoveries
Coho	1119	33%	11%	2699	45%	4%	120
Chinook	673	9%	16%	2704	23%	4%	110

Table 6: Guided Proprtions Review.

Data Source	Interviews / Angler Days	Guided Proportion
Creel Interivews	696	19%
iRec Anglers	14920	14%

Figure 1: Proportion of each day's fishing by hour.

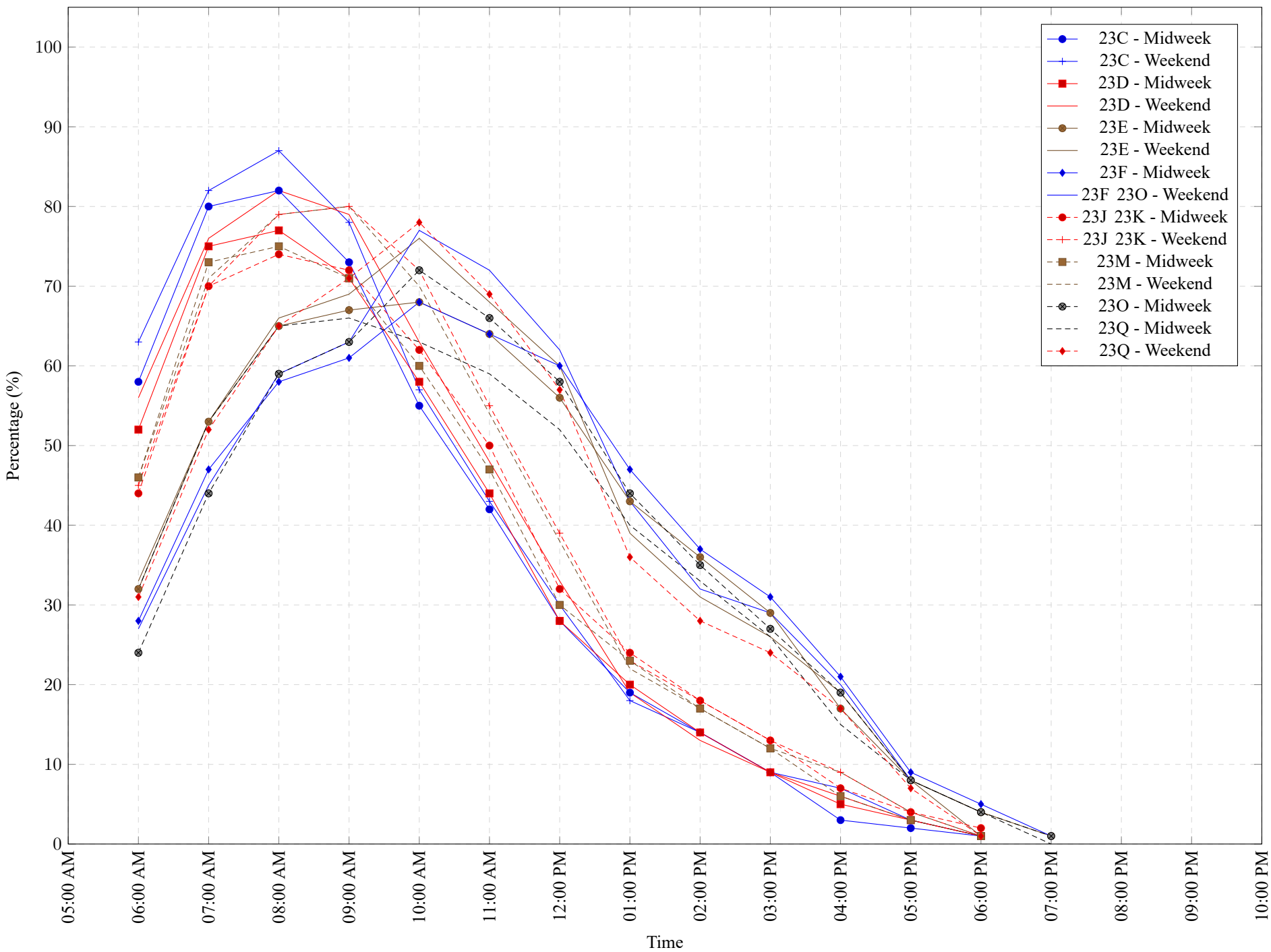


Table 7: Proportion of each day's fishing by hour.

Areas	Day Type	6:00 AM	7:00 AM	8:00 AM	9:00 AM	10:00 AM	11:00 AM	12:00 PM	01:00 PM	02:00 PM	03:00 PM	04:00 PM	05:00 PM	06:00 PM	07:00 PM	08:00 PM	09:00 PM	10:00 PM
23C	Midweek	58%	80%	82%	73%	55%	42%	28%	19%	14%	9%	3%	2%	1%	0%	0%	0%	0%
23C	Weekend	63%	82%	87%	78%	57%	43%	30%	18%	14%	9%	7%	3%	1%	0%	0%	0%	0%
23D	Midweek	52%	75%	77%	71%	58%	44%	28%	20%	14%	9%	5%	3%	1%	0%	0%	0%	0%
23D	Weekend	56%	76%	82%	79%	63%	48%	33%	19%	13%	9%	6%	3%	1%	0%	0%	0%	0%
23E	Midweek	32%	53%	65%	67%	68%	64%	56%	43%	36%	29%	17%	8%	4%	1%	0%	0%	0%
23E	Weekend	33%	53%	66%	69%	76%	68%	60%	39%	31%	26%	19%	8%	1%	0%	0%	0%	0%
23F	Midweek	28%	47%	58%	61%	68%	64%	60%	47%	37%	31%	21%	9%	5%	1%	0%	0%	0%
23F 23O	Weekend	27%	45%	59%	63%	77%	72%	62%	43%	32%	29%	20%	8%	0%	0%	0%	0%	0%
23J 23K	Midweek	44%	70%	74%	72%	62%	50%	32%	24%	18%	13%	7%	4%	2%	0%	0%	0%	0%
23J 23K	Weekend	45%	70%	79%	80%	72%	55%	39%	23%	18%	13%	9%	4%	1%	0%	0%	0%	0%
23M	Midweek	46%	73%	75%	71%	60%	47%	30%	23%	17%	12%	6%	3%	1%	0%	0%	0%	0%
23M	Weekend	46%	71%	79%	80%	70%	54%	38%	22%	17%	12%	9%	4%	1%	0%	0%	0%	0%
23O	Midweek	24%	44%	59%	63%	72%	66%	58%	44%	35%	27%	19%	8%	4%	1%	0%	0%	0%
23Q	Midweek	32%	53%	65%	66%	63%	59%	52%	40%	33%	26%	15%	8%	4%	0%	0%	0%	0%
23Q	Weekend	31%	52%	65%	71%	78%	69%	57%	36%	28%	24%	17%	7%	1%	0%	0%	0%	0%

Table 8: Daily Fishing Conditions.

Date	Day Type	China Creek	Clutesi Marina	Clutesi Ramp	Harbour Quay - Derby Only	Island West	McKay Bay Gas Dock	Mills Landing	Pat Leslie Boat Launch	Poett Nook	Ucluelet Gov Dock
29 Jul 2023	Weekend			calm/rippled			calm/rippled				calm/rippled
30 Jul 2023	Weekend	frequent whitecaps						calm/rippled			choppy
31 Jul 2023	Midweek	calm/rippled		calm/rippled			calm/rippled		calm/rippled		
01 Aug 2023	Midweek										choppy
02 Aug 2023	Midweek			choppy			calm/rippled				
03 Aug 2023	Midweek	choppy		calm/rippled				calm/rippled			choppy
04 Aug 2023	Midweek		choppy	calm/rippled		choppy	choppy				
05 Aug 2023	Weekend	frequent whitecaps		large swells							choppy
06 Aug 2023	Weekend										
07 Aug 2023	Weekend			choppy							choppy
08 Aug 2023	Midweek						choppy				
09 Aug 2023	Midweek										
10 Aug 2023	Midweek	frequent whitecaps		calm/rippled						choppy	calm/rippled
11 Aug 2023	Midweek			calm/rippled				choppy			calm/rippled
12 Aug 2023	Weekend						choppy				choppy
13 Aug 2023	Weekend					choppy	choppy				
14 Aug 2023	Midweek	frequent whitecaps						choppy			choppy
15 Aug 2023	Midweek							choppy			large swells
16 Aug 2023	Midweek								large swells		
17 Aug 2023	Midweek					choppy					
18 Aug 2023	Midweek						choppy				choppy
19 Aug 2023	Weekend			calm/rippled		choppy		choppy			
20 Aug 2023	Weekend					large swells	choppy				
21 Aug 2023	Midweek			choppy				frequent whitecaps	frequent whitecaps		
22 Aug 2023	Midweek			frequent whitecaps			choppy				
23 Aug 2023	Midweek	choppy					choppy				calm/rippled
24 Aug 2023	Midweek					calm/rippled					
25 Aug 2023	Midweek			calm/rippled							choppy
26 Aug 2023	Weekend			choppy							calm/rippled
27 Aug 2023	Weekend							calm/rippled			choppy
28 Aug 2023	Midweek	large swells						calm/rippled			calm/rippled
29 Aug 2023	Midweek						calm/rippled				
30 Aug 2023	Midweek		choppy	calm/rippled			calm/rippled				calm/rippled
31 Aug 2023	Midweek	choppy		choppy							choppy
01 Sep 2023	Midweek	frequent whitecaps		choppy				choppy			choppy
02 Sep 2023	Weekend	choppy			calm/rippled		calm/rippled				large swells
03 Sep 2023	Weekend	frequent whitecaps			calm/rippled	frequent whitecaps		frequent whitecaps	frequent whitecaps		