

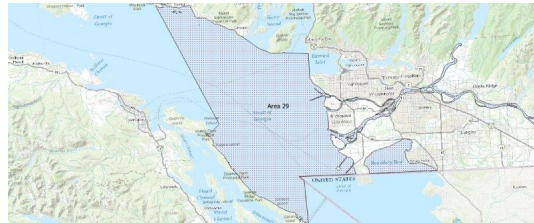
# FISHERIES AND OCEANS CANADA

## SOUTH COAST ASSESSMENT BULLETIN

### CREEL SURVEY DATA REVIEW PACKAGE

---

## Area 29 October 2023



---

*Prepared By:*

South Coast Salmon Stock Assessment Section

Saturday 10<sup>th</sup> February, 2024



Fisheries and Oceans  
Canada

Pêches et Océans  
Canada



**Table 1: Numbers of Interviews conducted contributing to the area by day and access site.**

|             |          | McDon-<br>ald Beach | Planetar-<br>ium | Sewell's<br>East | Thunder-<br>bird<br>Marina |
|-------------|----------|---------------------|------------------|------------------|----------------------------|
| Date        | Day Type | PM                  | PM               | PM               | PM                         |
| 28 Sep 2023 | Midweek  |                     |                  |                  |                            |
| 29 Sep 2023 | Midweek  |                     |                  |                  |                            |
| 30 Sep 2023 | Weekend  |                     |                  |                  |                            |
| 01 Oct 2023 | Weekend  |                     |                  |                  |                            |
| 02 Oct 2023 | Midweek  |                     |                  |                  |                            |
| 03 Oct 2023 | Midweek  |                     |                  | 1                |                            |
| 04 Oct 2023 | Midweek  |                     |                  |                  |                            |
| 05 Oct 2023 | Midweek  |                     |                  |                  |                            |
| 06 Oct 2023 | Midweek  |                     |                  |                  |                            |
| 07 Oct 2023 | Weekend  |                     | 8                |                  |                            |
| 08 Oct 2023 | Weekend  |                     |                  | 2                |                            |
| 09 Oct 2023 | Weekend  |                     |                  |                  |                            |
| 10 Oct 2023 | Midweek  |                     |                  |                  |                            |
| 11 Oct 2023 | Midweek  |                     |                  |                  |                            |
| 12 Oct 2023 | Midweek  |                     |                  |                  |                            |
| 13 Oct 2023 | Midweek  |                     |                  |                  |                            |
| 14 Oct 2023 | Weekend  |                     |                  |                  |                            |
| 15 Oct 2023 | Weekend  |                     |                  |                  |                            |
| 16 Oct 2023 | Midweek  |                     |                  |                  |                            |
| 17 Oct 2023 | Midweek  |                     |                  |                  |                            |
| 18 Oct 2023 | Midweek  |                     |                  |                  |                            |
| 19 Oct 2023 | Midweek  |                     |                  |                  |                            |
| 20 Oct 2023 | Midweek  |                     |                  |                  |                            |
| 21 Oct 2023 | Weekend  |                     |                  |                  |                            |
| 22 Oct 2023 | Weekend  |                     |                  |                  |                            |
| 23 Oct 2023 | Midweek  |                     |                  |                  |                            |
| 24 Oct 2023 | Midweek  |                     |                  |                  |                            |
| 25 Oct 2023 | Midweek  |                     |                  |                  |                            |
| 26 Oct 2023 | Midweek  |                     |                  |                  |                            |
| 27 Oct 2023 | Midweek  |                     |                  |                  |                            |
| 28 Oct 2023 | Weekend  | 1                   |                  |                  |                            |
| 29 Oct 2023 | Weekend  |                     |                  |                  | 1                          |
| 30 Oct 2023 | Midweek  |                     |                  |                  |                            |
| 31 Oct 2023 | Midweek  |                     |                  |                  |                            |
| 01 Nov 2023 | Midweek  |                     |                  |                  |                            |
| 02 Nov 2023 | Midweek  |                     |                  |                  |                            |
| 03 Nov 2023 | Midweek  |                     |                  |                  |                            |

Table 2: Daily tally of interviews, catch and effort.

| Date        | Day                      | Average Fishing Conditions | Interviews & Log Trips | Chinook | Coho | Sockeye | Halibut | Observed Fishing | Flight Time | Expanded Fishing |
|-------------|--------------------------|----------------------------|------------------------|---------|------|---------|---------|------------------|-------------|------------------|
| 28-Sep-2023 | Thursday                 |                            | 0                      |         |      |         |         | 18               | 1156        | 23               |
| 29-Sep-2023 | Friday                   |                            | 0                      |         |      |         |         |                  |             |                  |
| 30-Sep-2023 | Saturday                 |                            | 0                      |         |      |         |         |                  |             |                  |
| 01-Oct-2023 | Sunday                   |                            | 1                      | 4       | 1    |         |         | 45               | 1205        | 71               |
| 02-Oct-2023 | Monday                   |                            | 0                      |         |      |         |         |                  |             |                  |
| 03-Oct-2023 | Tuesday                  | choppy                     | 2                      | 1       | 1    |         |         |                  |             |                  |
| 04-Oct-2023 | Wednesday                |                            | 0                      |         |      |         |         | 46               | 1216        | 68               |
| 05-Oct-2023 | Thursday                 |                            | 0                      |         |      |         |         |                  |             |                  |
| 06-Oct-2023 | Friday                   |                            | 0                      |         |      |         |         |                  |             |                  |
| 07-Oct-2023 | Saturday                 | calm/rippled               | 10                     | 4       | 6    |         |         |                  |             |                  |
| 08-Oct-2023 | Sunday                   | calm/rippled               | 2                      |         |      |         |         |                  |             |                  |
| 09-Oct-2023 | Monday<br>(Thanksgiving) |                            | 1                      | 4       |      |         |         |                  |             |                  |
| 10-Oct-2023 | Tuesday                  |                            | 0                      |         |      |         |         |                  |             |                  |
| 11-Oct-2023 | Wednesday                |                            | 0                      |         |      |         |         |                  |             |                  |
| 12-Oct-2023 | Thursday                 |                            | 0                      |         |      |         |         | 43               | 1153        | 57               |
| 13-Oct-2023 | Friday                   |                            | 0                      |         |      |         |         |                  |             |                  |
| 14-Oct-2023 | Saturday                 |                            | 0                      |         |      |         |         | 25               | 1217        | 40               |
| 15-Oct-2023 | Sunday                   |                            | 0                      |         |      |         |         |                  |             |                  |
| 16-Oct-2023 | Monday                   |                            | 0                      |         |      |         |         |                  |             |                  |
| 17-Oct-2023 | Tuesday                  |                            | 0                      |         |      |         |         | 1                | 1211        | 1                |
| 18-Oct-2023 | Wednesday                |                            | 0                      |         |      |         |         |                  |             |                  |
| 19-Oct-2023 | Thursday                 |                            | 0                      |         |      |         |         |                  |             |                  |
| 20-Oct-2023 | Friday                   |                            | 0                      |         |      |         |         |                  |             |                  |
| 21-Oct-2023 | Saturday                 |                            | 0                      |         |      |         |         | 6                | 1201        | 10               |
| 22-Oct-2023 | Sunday                   |                            | 0                      |         |      |         |         |                  |             |                  |
| 23-Oct-2023 | Monday                   |                            | 0                      |         |      |         |         |                  |             |                  |
| 24-Oct-2023 | Tuesday                  |                            | 0                      |         |      |         |         |                  |             |                  |
| 25-Oct-2023 | Wednesday                |                            | 0                      |         |      |         |         |                  |             |                  |
| 26-Oct-2023 | Thursday                 |                            | 0                      |         |      |         |         |                  |             |                  |
| 27-Oct-2023 | Friday                   |                            | 0                      |         |      |         |         |                  |             |                  |
| 28-Oct-2023 | Saturday                 | calm/rippled               | 1                      |         |      |         |         |                  |             |                  |
| 29-Oct-2023 | Sunday                   | calm/rippled               | 1                      |         | 1    |         |         |                  |             |                  |
| 30-Oct-2023 | Monday                   |                            | 0                      |         |      |         |         |                  |             |                  |
| 31-Oct-2023 | Tuesday                  |                            | 0                      |         |      |         |         |                  |             |                  |
| 01-Nov-2023 | Wednesday                |                            | 1                      |         |      |         |         |                  |             |                  |
| 02-Nov-2023 | Thursday                 |                            | 0                      |         |      |         |         |                  |             |                  |
| 03-Nov-2023 | Friday                   |                            | 0                      |         |      |         |         |                  |             |                  |
|             | Totals                   | choppy                     | 2                      | 1       | 1    |         |         | 30*              |             | 42*              |
|             | Totals                   | calm/rippled               | 16                     | 12      | 8    |         |         | 25*              |             | 40*              |

\* Average number of boats Observed and Expanded

**Table 3: Simple area based cpue (catch per boat trip) expansion.**

| Day Type | Average Expanded Boats | Number of Days | Total Estimated Effort | CPUE    |      |         |         | Retained |      |         |         |
|----------|------------------------|----------------|------------------------|---------|------|---------|---------|----------|------|---------|---------|
|          |                        |                |                        | Chinook | Coho | Sockeye | Halibut | Chinook  | Coho | Sockeye | Halibut |
| Midweek  | 42                     | 21             | 882                    | 0.5     | 0.5  |         |         | 441      | 441  |         |         |
| Weekend  | 40                     | 10             | 400                    | 0.75    | 0.5  |         |         | 300      | 200  |         |         |

**Table 4: Recent years estimates of retained catch and effort.**

| Year     | Month   | Total Effort | Chinook Kept | Coho Kept | Sockeye Kept | Halibut Kept |
|----------|---------|--------------|--------------|-----------|--------------|--------------|
| 2022     | October | 584          | 60           | 109       |              | 0            |
| 2023     | October | 1363         | 633          | 284       |              | 0            |
| 5-Yr Avg | October | 584          | 60           | 109       |              | 0            |

**Table 5: Sport Head Recovery Review.**

| Species | Creel Marked Catch | Creel Mark Rate | Creel Submission Rate | iRec Marked Catch | iRec Mark Rate | iRec Submission Rate | Sport Head Recoveries |
|---------|--------------------|-----------------|-----------------------|-------------------|----------------|----------------------|-----------------------|
| Coho    | 280                | 99%             | 1%                    | 310               | 88%            | 1%                   | 3                     |
| Chinook | 307                | 48%             | 0%                    | 87                | 45%            | 1%                   | 1                     |

**Table 6: Guided Proprtions Review.**

| Data Source      | Interviews / Angler Days | Guided Proportion |
|------------------|--------------------------|-------------------|
| Creel Interivews | 16                       | 25%               |
| iRec Anglers     | 950                      | 6%                |

Figure 1: Proportion of each day's fishing by hour.

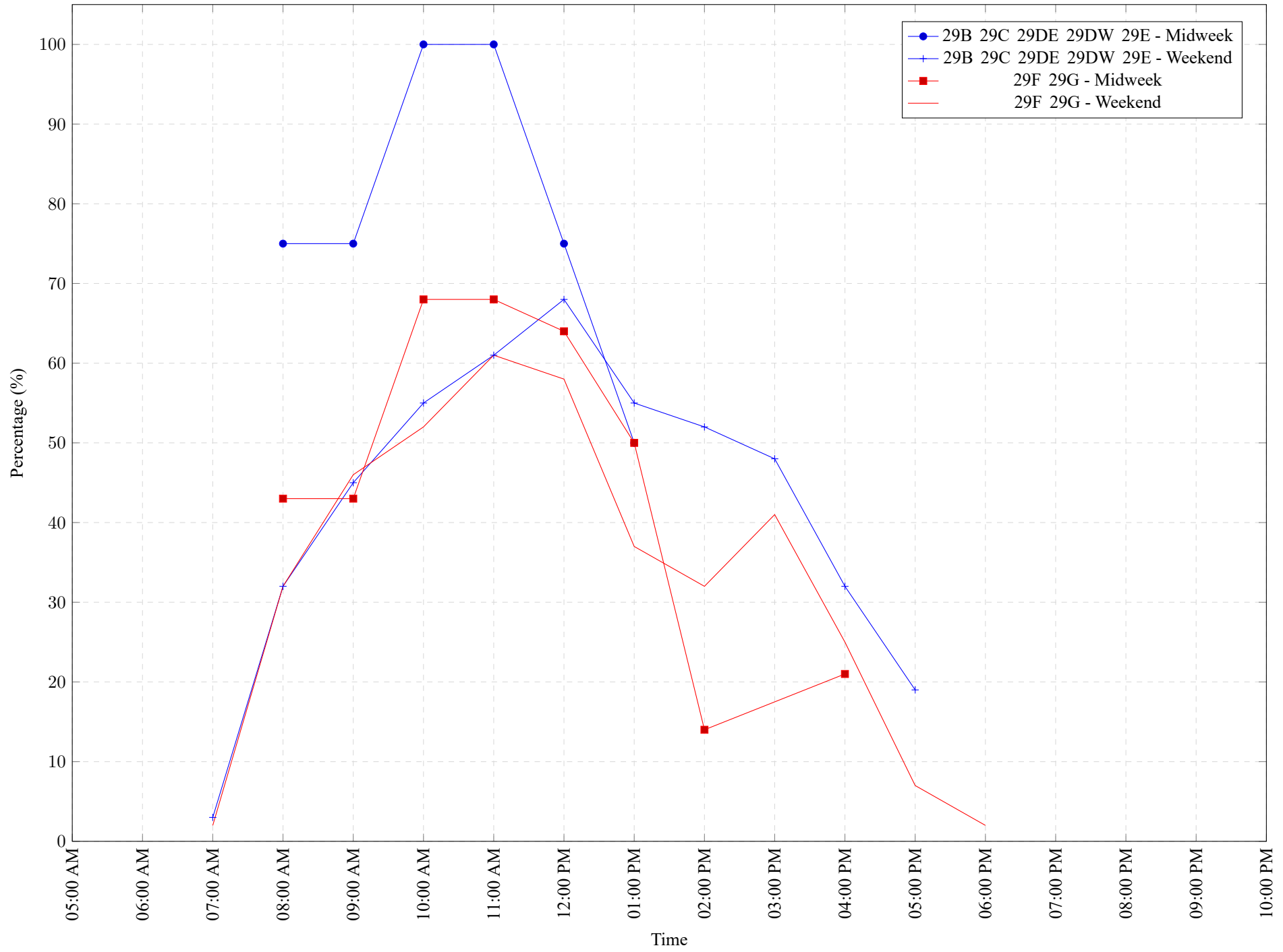


Table 7: Proportion of each day's fishing by hour.

| Areas   |     |      |      |     | Day Type | 6:00 AM | 7:00 AM | 8:00 AM | 9:00 AM | 10:00 AM | 11:00 AM | 12:00 PM | 01:00 PM | 02:00 PM | 03:00 PM | 04:00 PM | 05:00 PM | 06:00 PM | 07:00 PM | 08:00 PM | 09:00 PM | 10:00 PM |
|---------|-----|------|------|-----|----------|---------|---------|---------|---------|----------|----------|----------|----------|----------|----------|----------|----------|----------|----------|----------|----------|----------|
| 29B     | 29C | 29DE | 29DW | 29E | Midweek  | 0%      | 0%      | 75%     | 75%     | 100%     | 100%     | 75%      | 50%      | 0%       | 0%       | 0%       | 0%       | 0%       | 0%       | 0%       | 0%       | 0%       |
| 29B     | 29C | 29DE | 29DW | 29E | Weekend  | 0%      | 3%      | 32%     | 45%     | 55%      | 61%      | 68%      | 55%      | 52%      | 48%      | 32%      | 19%      | 0%       | 0%       | 0%       | 0%       | 0%       |
| 29F 29G |     |      |      |     | Midweek  | 0%      | 0%      | 43%     | 43%     | 68%      | 68%      | 64%      | 50%      | 14%      | 0%       | 21%      | 0%       | 0%       | 0%       | 0%       | 0%       | 0%       |
| 29F 29G |     |      |      |     | Weekend  | 0%      | 2%      | 32%     | 46%     | 52%      | 61%      | 58%      | 37%      | 32%      | 41%      | 25%      | 7%       | 2%       | 0%       | 0%       | 0%       | 0%       |

**Table 8: Daily Fishing Conditions.**

| Date        | Day Type | McDonald Beach | Planetarium  | Sewell's East | Thunderbird Marina |
|-------------|----------|----------------|--------------|---------------|--------------------|
| 28 Sep 2023 | Midweek  |                |              |               |                    |
| 29 Sep 2023 | Midweek  |                |              |               |                    |
| 30 Sep 2023 | Weekend  |                |              |               |                    |
| 01 Oct 2023 | Weekend  |                |              |               |                    |
| 02 Oct 2023 | Midweek  |                |              |               |                    |
| 03 Oct 2023 | Midweek  |                |              | choppy        |                    |
| 04 Oct 2023 | Midweek  |                |              |               |                    |
| 05 Oct 2023 | Midweek  |                |              |               |                    |
| 06 Oct 2023 | Midweek  |                |              |               |                    |
| 07 Oct 2023 | Weekend  |                | calm/rippled |               |                    |
| 08 Oct 2023 | Weekend  |                |              | calm/rippled  |                    |
| 09 Oct 2023 | Weekend  |                |              |               |                    |
| 10 Oct 2023 | Midweek  |                |              |               |                    |
| 11 Oct 2023 | Midweek  |                |              |               |                    |
| 12 Oct 2023 | Midweek  |                |              |               |                    |
| 13 Oct 2023 | Midweek  |                |              |               |                    |
| 14 Oct 2023 | Weekend  |                |              |               |                    |
| 15 Oct 2023 | Weekend  |                |              |               |                    |
| 16 Oct 2023 | Midweek  |                |              |               |                    |
| 17 Oct 2023 | Midweek  |                |              |               |                    |
| 18 Oct 2023 | Midweek  |                |              |               |                    |
| 19 Oct 2023 | Midweek  |                |              |               |                    |
| 20 Oct 2023 | Midweek  |                |              |               |                    |
| 21 Oct 2023 | Weekend  |                |              |               |                    |
| 22 Oct 2023 | Weekend  |                |              |               |                    |
| 23 Oct 2023 | Midweek  |                |              |               |                    |
| 24 Oct 2023 | Midweek  |                |              |               |                    |
| 25 Oct 2023 | Midweek  |                |              |               |                    |
| 26 Oct 2023 | Midweek  |                |              |               |                    |
| 27 Oct 2023 | Midweek  |                |              |               |                    |
| 28 Oct 2023 | Weekend  | calm/rippled   |              |               |                    |
| 29 Oct 2023 | Weekend  |                |              |               | calm/rippled       |
| 30 Oct 2023 | Midweek  |                |              |               |                    |
| 31 Oct 2023 | Midweek  |                |              |               |                    |
| 01 Nov 2023 | Midweek  |                |              |               |                    |
| 02 Nov 2023 | Midweek  |                |              |               |                    |
| 03 Nov 2023 | Midweek  |                |              |               |                    |