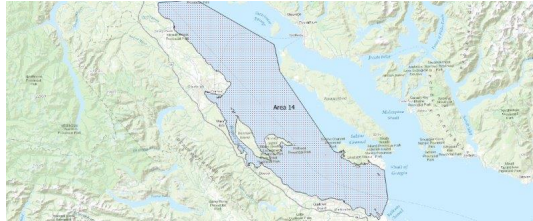


FISHERIES AND OCEANS CANADA

SOUTH COAST ASSESSMENT BULLETIN

CREEL SURVEY DATA REVIEW PACKAGE

Area 14 June 2024



Prepared By:

South Coast Salmon Stock Assessment Section

Sunday 18th August, 2024



Fisheries and Oceans
Canada

Pêches et Océans
Canada

**your
catch
counts**

Table 1: Numbers of Interviews conducted contributing to the area by day and access site.

Date	Day Type	Big Rock Boat Rental		Brechin	Comox Mun		French Ck		Kitty Coleman		Pacific Play		Schooner	Union Bay
		AM	PM	PM	AM	PM	AM	PM	AM	PM	AM	PM	AM	PM
29 May 2024	Midweek													
30 May 2024	Midweek				4									
31 May 2024	Midweek	1				5								
01 Jun 2024	Weekend								1					
02 Jun 2024	Weekend													
03 Jun 2024	Midweek													
04 Jun 2024	Midweek													
05 Jun 2024	Midweek													
06 Jun 2024	Midweek						3					1		
07 Jun 2024	Midweek				1				7					
08 Jun 2024	Weekend				3									
09 Jun 2024	Weekend													
10 Jun 2024	Midweek													
11 Jun 2024	Midweek							11						
12 Jun 2024	Midweek													
13 Jun 2024	Midweek													
14 Jun 2024	Midweek													
15 Jun 2024	Weekend							13						2
16 Jun 2024	Weekend						10		2		1			
17 Jun 2024	Midweek								1					
18 Jun 2024	Midweek													
19 Jun 2024	Midweek					7							1	
20 Jun 2024	Midweek		1											
21 Jun 2024	Midweek													
22 Jun 2024	Weekend			1										
23 Jun 2024	Weekend										1			
24 Jun 2024	Midweek					2			3					
25 Jun 2024	Midweek									2				
26 Jun 2024	Midweek						6							
27 Jun 2024	Midweek													
28 Jun 2024	Midweek													
29 Jun 2024	Weekend				7						5		1	
30 Jun 2024	Weekend								15		5			
01 Jul 2024	Weekend										3			
02 Jul 2024	Midweek					2								
03 Jul 2024	Midweek													

Table 2: Daily tally of interviews, catch and effort.

Date	Day	Average Fishing Conditions	Interviews & Log Trips	Chinook	Coho	Sockeye	Halibut	Observed Fishing	Flight Time	Expanded Fishing
29-May-2024	Wednesday		1							
30-May-2024	Thursday	calm/rippled	4					12	1034	35
31-May-2024	Friday	calm/rippled	8							
01-Jun-2024	Saturday	calm/rippled	2					27	1036	104
02-Jun-2024	Sunday		0							
03-Jun-2024	Monday		0							
04-Jun-2024	Tuesday		0							
05-Jun-2024	Wednesday		3		2					
06-Jun-2024	Thursday	choppy	7		10					
07-Jun-2024	Friday	calm/rippled	8		6			27	1038	78
08-Jun-2024	Saturday	calm/rippled	6		8					
09-Jun-2024	Sunday		3		5			35	1054	133
10-Jun-2024	Monday		0							
11-Jun-2024	Tuesday		0							
12-Jun-2024	Wednesday	choppy	13		19					
13-Jun-2024	Thursday		2		8					
14-Jun-2024	Friday		0					1	1034	3
15-Jun-2024	Saturday	frequent whitecaps	17		18			23	1036	85
16-Jun-2024	Sunday	choppy	15		24					
17-Jun-2024	Monday	calm/rippled	1		2					
18-Jun-2024	Tuesday		2		3					
19-Jun-2024	Wednesday	calm/rippled	11		17					
20-Jun-2024	Thursday	calm/rippled	3		10			34	1038	98
21-Jun-2024	Friday		1		4					
22-Jun-2024	Saturday	frequent whitecaps	2		3			7	1035	26
23-Jun-2024	Sunday	choppy	2		11					
24-Jun-2024	Monday	calm/rippled	6		15			39	1033	111
25-Jun-2024	Tuesday	calm/rippled	4		9					
26-Jun-2024	Wednesday	frequent whitecaps	7		18					
27-Jun-2024	Thursday		0							
28-Jun-2024	Friday		2		4					
29-Jun-2024	Saturday	calm/rippled	13		24					
30-Jun-2024	Sunday	calm/rippled	20		21					
01-Jul-2024	Monday (Canada Day)	frequent whitecaps	3		3			22	1038	84
02-Jul-2024	Tuesday	choppy	2							
03-Jul-2024	Wednesday		0					9	1038	26
	Totals	calm/rippled	70		127			25*		73*
	Totals	choppy	80		114			23*		87*

* Average number of boats Observed and Expanded

Table 3: Simple area based cpue (catch per boat trip) expansion.

Day Type	Average Expanded Boats	Number of Days	Total Estimated Effort	CPUE				Retained			
				Chinook	Coho	Sockeye	Halibut	Chinook	Coho	Sockeye	Halibut
Weekend	87	10	870		1.425				1240		
Midweek	73	20	1460		1.814				2648		

Table 4: Recent years estimates of retained catch and effort.

Year	Month	Total Effort	Chinook Kept	Coho Kept	Sockeye Kept	Halibut Kept
2019	June	1266	3	194		0
2020	June	1396	8	245		
2021	June	2552	1	181		0
2022	June	1183	0	31		0
2023	June	1781	1	2362		0
2024	June	2396	0	2934		0
5-Yr Avg	June	1636	3	603		0

Table 5: Sport Head Recovery Review.

Species	Creel Marked Catch	Creel Mark Rate	Creel Submission Rate	iRec Marked Catch	iRec Mark Rate	iRec Submission Rate	Sport Head Recoveries
---------	--------------------	-----------------	-----------------------	-------------------	----------------	----------------------	-----------------------

Table 6: Guided Proprtions Review.

Data Source	Interviews / Angler Days	Guided Proportion
Creel Interivews	113	3%
iRec Anglers	3294	11%

Figure 1: Proportion of each day's fishing by hour.

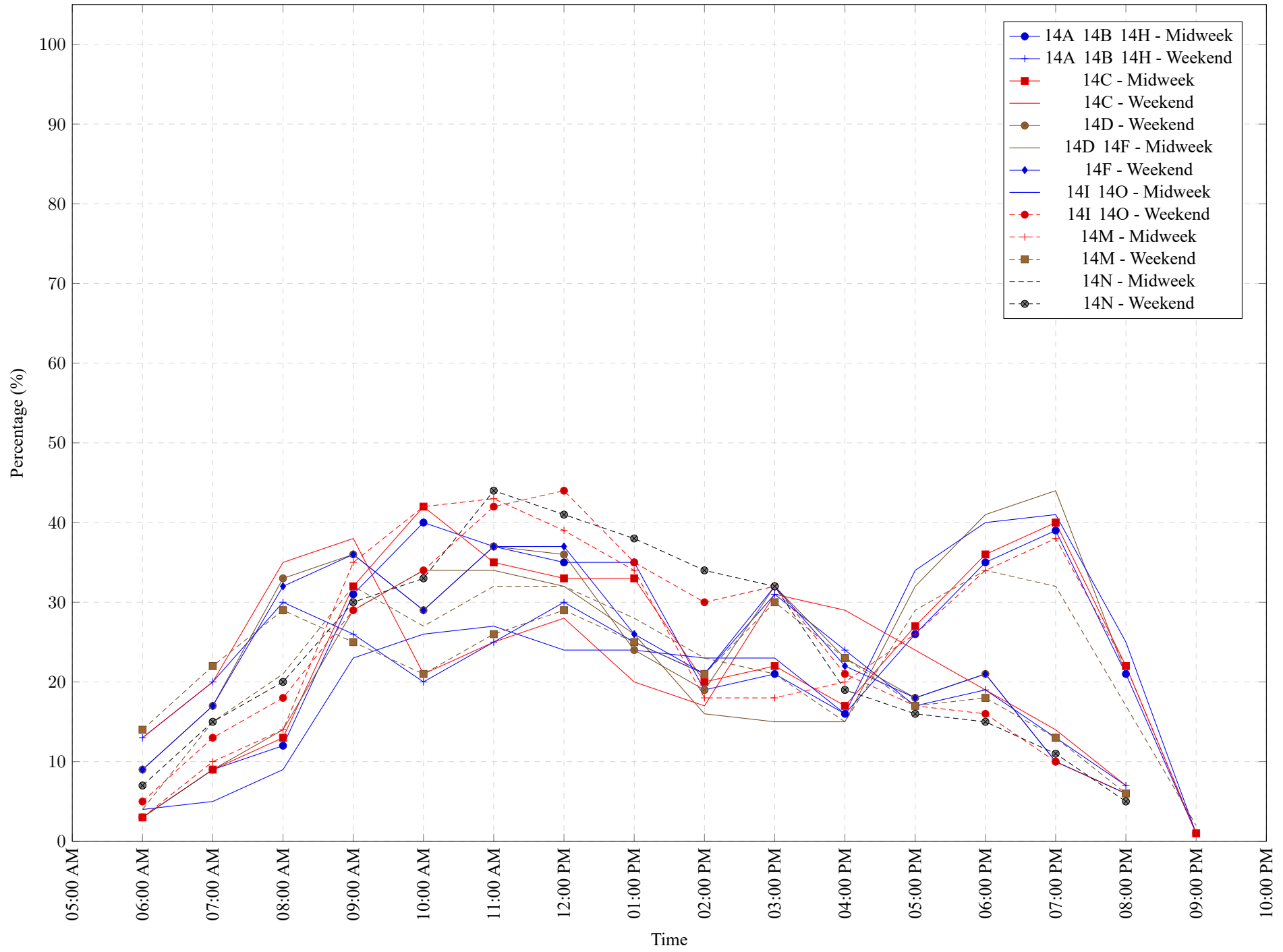


Table 7: Proportion of each day's fishing by hour.

Areas		Day Type	6:00 AM	7:00 AM	8:00 AM	9:00 AM	10:00 AM	11:00 AM	12:00 PM	01:00 PM	02:00 PM	03:00 PM	04:00 PM	05:00 PM	06:00 PM	07:00 PM	08:00 PM	09:00 PM	10:00 PM
14A 14B 14H		Midweek	3%	9%	12%	31%	40%	37%	35%	35%	19%	21%	16%	26%	35%	39%	21%	1%	0%
14A 14B 14H		Weekend	13%	20%	30%	26%	20%	25%	30%	25%	21%	31%	24%	17%	19%	13%	7%	0%	0%
14C		Midweek	3%	9%	13%	32%	42%	35%	33%	33%	20%	22%	17%	27%	36%	40%	22%	1%	0%
14C		Weekend	13%	20%	35%	38%	21%	25%	28%	20%	17%	31%	29%	24%	19%	14%	7%	0%	0%
14D		Weekend	9%	17%	33%	36%	29%	37%	36%	24%	19%	32%	23%	18%	21%	10%	6%	0%	0%
14D 14F		Midweek	3%	9%	14%	29%	34%	34%	32%	26%	16%	15%	15%	32%	41%	44%	21%	0%	0%
14F		Weekend	9%	17%	32%	36%	29%	37%	37%	26%	21%	32%	22%	18%	21%	10%	6%	0%	0%
14I 14O		Midweek	4%	5%	9%	23%	26%	27%	24%	24%	23%	23%	16%	34%	40%	41%	25%	1%	0%
14I 14O		Weekend	5%	13%	18%	29%	34%	42%	44%	35%	30%	32%	21%	17%	16%	10%	6%	0%	0%
14M		Midweek	3%	10%	14%	35%	42%	43%	39%	34%	18%	18%	20%	26%	34%	38%	22%	1%	0%
14M		Weekend	14%	22%	29%	25%	21%	26%	29%	25%	21%	30%	23%	17%	18%	13%	6%	0%	0%
14N		Midweek	4%	15%	21%	32%	27%	32%	32%	28%	23%	21%	15%	29%	34%	32%	17%	2%	0%
14N		Weekend	7%	15%	20%	30%	33%	44%	41%	38%	34%	32%	19%	16%	15%	11%	5%	0%	0%

Table 8: Daily Fishing Conditions.

Date	Day Type	Big Rock Boat Rental	Brechin	Comox Mun	French Ck	Kitty Coleman	Pacific Play	Schooner	Union Bay
29 May 2024	Midweek	calm/rippled		calm/rippled					
30 May 2024	Midweek								
31 May 2024	Midweek								
01 Jun 2024	Weekend					calm/rippled			
02 Jun 2024	Weekend								
03 Jun 2024	Midweek								
04 Jun 2024	Midweek								
05 Jun 2024	Midweek								
06 Jun 2024	Midweek								
07 Jun 2024	Midweek			calm/rippled	choppy	calm/rippled			
08 Jun 2024	Weekend								
09 Jun 2024	Weekend								
10 Jun 2024	Midweek								
11 Jun 2024	Midweek								
12 Jun 2024	Midweek								
13 Jun 2024	Midweek				choppy				
14 Jun 2024	Midweek								
15 Jun 2024	Weekend								
16 Jun 2024	Weekend				frequent whitecaps choppy	calm/rippled	calm/rippled		calm/rippled
17 Jun 2024	Midweek								
18 Jun 2024	Midweek								
19 Jun 2024	Midweek			calm/rippled				choppy	
20 Jun 2024	Midweek								
21 Jun 2024	Midweek								
22 Jun 2024	Weekend		frequent whitecaps						
23 Jun 2024	Weekend								
24 Jun 2024	Midweek								
25 Jun 2024	Midweek			calm/rippled		calm/rippled			
26 Jun 2024	Midweek								
27 Jun 2024	Midweek								
28 Jun 2024	Midweek								
29 Jun 2024	Weekend								
30 Jun 2024	Weekend								
01 Jul 2024	Weekend					calm/rippled	calm/rippled	frequent whitecaps	
02 Jul 2024	Midweek								
03 Jul 2024	Midweek								