

FISHERIES AND OCEANS CANADA

SOUTH COAST ASSESSMENT BULLETIN

CREEL SURVEY DATA REVIEW PACKAGE

Area 16 June 2024



Prepared By:

South Coast Salmon Stock Assessment Section

Sunday 18th August, 2024



Fisheries and Oceans
Canada

Pêches et Océans
Canada



Table 1: Numbers of Interviews conducted contributing to the area by day and access site.

Date	Day Type	Bucaneer		Cooper's Green		Egmont	Madeira		McDon- ald Beach	Pender Harbour Resort		Porpoise Bay	Saltery Bay		Westview
		AM	PM	AM	PM	AM	AM	PM	PM	AM	PM	PM	AM	PM	PM
29 May 2024	Midweek							3							
30 May 2024	Midweek				1										
31 May 2024	Midweek														
01 Jun 2024	Weekend									2					
02 Jun 2024	Weekend														
03 Jun 2024	Midweek														
04 Jun 2024	Midweek										1				
05 Jun 2024	Midweek														
06 Jun 2024	Midweek														
07 Jun 2024	Midweek														
08 Jun 2024	Weekend										3		2		
09 Jun 2024	Weekend														
10 Jun 2024	Midweek														
11 Jun 2024	Midweek														
12 Jun 2024	Midweek														
13 Jun 2024	Midweek														
14 Jun 2024	Midweek														
15 Jun 2024	Weekend	3													
16 Jun 2024	Weekend												1		
17 Jun 2024	Midweek														
18 Jun 2024	Midweek													1	
19 Jun 2024	Midweek														
20 Jun 2024	Midweek														
21 Jun 2024	Midweek			2											
22 Jun 2024	Weekend						1	1		2				1	
23 Jun 2024	Weekend			3											
24 Jun 2024	Midweek														
25 Jun 2024	Midweek				3								1		
26 Jun 2024	Midweek														
27 Jun 2024	Midweek														
28 Jun 2024	Midweek														
29 Jun 2024	Weekend		4			1									
30 Jun 2024	Weekend							4							1
01 Jul 2024	Weekend									3					
02 Jul 2024	Midweek														
03 Jul 2024	Midweek							2						1	

Table 2: Daily tally of interviews, catch and effort.

Date	Day	Average Fishing Conditions	Interviews & Log Trips	Chinook	Coho	Sockeye	Halibut	Observed Fishing	Flight Time	Expanded Fishing
29-May-2024	Wednesday	calm/rippled	4							
30-May-2024	Thursday	choppy	2					11	1121	35
31-May-2024	Friday		0							
01-Jun-2024	Saturday	choppy	2					16	1123	48
02-Jun-2024	Sunday		0							
03-Jun-2024	Monday		0							
04-Jun-2024	Tuesday		0							
05-Jun-2024	Wednesday	calm/rippled	2							
06-Jun-2024	Thursday		1							
07-Jun-2024	Friday		0					23	1125	75
08-Jun-2024	Saturday	choppy	5							
09-Jun-2024	Sunday		0					31	1139	96
10-Jun-2024	Monday		0							
11-Jun-2024	Tuesday		0							
12-Jun-2024	Wednesday		3							
13-Jun-2024	Thursday		1							
14-Jun-2024	Friday		0					3	1122	10
15-Jun-2024	Saturday	choppy	3		1			26	1124	77
16-Jun-2024	Sunday	choppy	3							
17-Jun-2024	Monday		0							
18-Jun-2024	Tuesday	choppy	2							
19-Jun-2024	Wednesday		2							
20-Jun-2024	Thursday		1					25	1124	79
21-Jun-2024	Friday	calm/rippled	5							
22-Jun-2024	Saturday	choppy	3					12	1125	35
23-Jun-2024	Sunday	calm/rippled	5		17					
24-Jun-2024	Monday		2	1				14	1118	43
25-Jun-2024	Tuesday	calm/rippled	7		8					
26-Jun-2024	Wednesday		4							
27-Jun-2024	Thursday		1							
28-Jun-2024	Friday		0							
29-Jun-2024	Saturday	calm/rippled	5							
30-Jun-2024	Sunday	calm/rippled	5							
01-Jul-2024	Monday (Canada Day)	calm/rippled	3	2	1			17	1129	51
02-Jul-2024	Tuesday		3							
03-Jul-2024	Wednesday	calm/rippled	4					22	1129	70
	Totals	calm/rippled	31	1	8			16*		52*
	Totals	choppy	31		18			21*		64*

* Average number of boats Observed and Expanded

Table 3: Simple area based cpue (catch per boat trip) expansion.

Day Type	Average Expanded Boats	Number of Days	Total Estimated Effort	CPUE				Retained			
				Chinook	Coho	Sockeye	Halibut	Chinook	Coho	Sockeye	Halibut
Midweek	52	20	1040	0.032	0.258			33	268		
Weekend	64	10	640		0.581				372		

Table 4: Recent years estimates of retained catch and effort.

Year	Month	Total Effort	Chinook Kept	Coho Kept	Sockeye Kept	Halibut Kept
2019	June	726		13		
2020	June	916				
2021	June	2337	512	22		0
2022	June	851	330			88
2023	June	1031	2	145		0
2024	June	1534	0	1880		0
5-Yr Avg	June	1172	281	60		29

Table 5: Sport Head Recovery Review.

Species	Creel Marked Catch	Creel Mark Rate	Creel Submission Rate	iRec Marked Catch	iRec Mark Rate	iRec Submission Rate	Sport Head Recoveries
---------	--------------------	-----------------	-----------------------	-------------------	----------------	----------------------	-----------------------

Table 6: Guided Proprtions Review.

Data Source	Interviews / Angler Days	Guided Proportion
Creel Interivews	37	3%
iRec Anglers	2105	8%

Figure 1: Proportion of each day's fishing by hour.

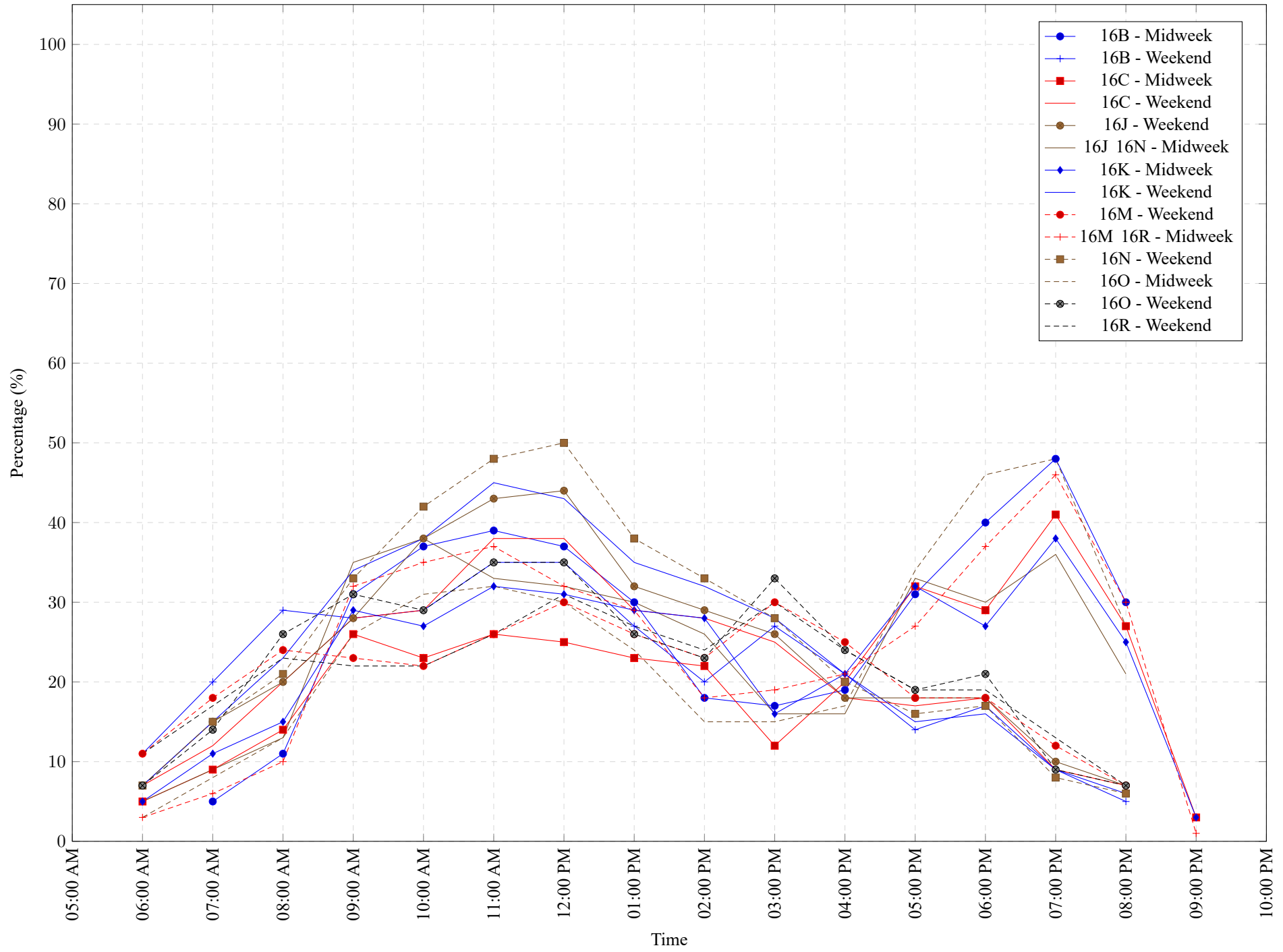


Table 7: Proportion of each day's fishing by hour.

Areas	Day Type	6:00 AM	7:00 AM	8:00 AM	9:00 AM	10:00 AM	11:00 AM	12:00 PM	01:00 PM	02:00 PM	03:00 PM	04:00 PM	05:00 PM	06:00 PM	07:00 PM	08:00 PM	09:00 PM	10:00 PM
16B	Midweek	0%	5%	11%	31%	37%	39%	37%	30%	18%	17%	19%	31%	40%	48%	30%	0%	0%
16B	Weekend	11%	20%	29%	28%	29%	35%	35%	27%	20%	27%	21%	14%	17%	9%	5%	0%	0%
16C	Midweek	5%	9%	14%	26%	23%	26%	25%	23%	22%	12%	20%	32%	29%	41%	27%	3%	0%
16C	Weekend	7%	12%	20%	28%	29%	38%	38%	29%	28%	25%	18%	17%	18%	9%	7%	0%	0%
16J	Weekend	7%	15%	20%	28%	38%	43%	44%	32%	29%	26%	18%	18%	18%	10%	7%	0%	0%
16J 16N	Midweek	5%	9%	13%	35%	38%	33%	32%	30%	26%	16%	16%	33%	30%	36%	21%	0%	0%
16K	Midweek	5%	11%	15%	29%	27%	32%	31%	29%	28%	16%	21%	32%	27%	38%	25%	3%	0%
16K	Weekend	7%	15%	23%	34%	38%	45%	43%	35%	32%	28%	21%	15%	16%	9%	6%	0%	0%
16M	Weekend	11%	18%	24%	23%	22%	26%	30%	26%	23%	30%	25%	18%	18%	12%	7%	0%	0%
16M 16R	Midweek	3%	6%	10%	32%	35%	37%	32%	29%	18%	19%	21%	27%	37%	46%	30%	1%	0%
16N	Weekend	7%	15%	21%	33%	42%	48%	50%	38%	33%	28%	20%	16%	17%	8%	6%	0%	0%
16O	Midweek	3%	8%	13%	26%	31%	32%	30%	24%	15%	15%	17%	34%	46%	48%	27%	0%	0%
16O	Weekend	7%	14%	26%	31%	29%	35%	35%	26%	23%	33%	24%	19%	21%	9%	7%	0%	0%
16R	Weekend	11%	17%	23%	22%	22%	26%	31%	27%	24%	30%	24%	19%	19%	13%	7%	0%	0%

Table 8: Daily Fishing Conditions.

Date	Day Type	Bucaneer	Cooper's Green	Egmont	Madeira	McDonald Beach	Pender Harbour Resort	Porpoise Bay	Saltery Bay	Westview
29 May 2024	Midweek				calm/rippled					
30 May 2024	Midweek		choppy							
31 May 2024	Midweek									
01 Jun 2024	Weekend						choppy			
02 Jun 2024	Weekend									
03 Jun 2024	Midweek									
04 Jun 2024	Midweek									
05 Jun 2024	Midweek						calm/rippled			
06 Jun 2024	Midweek									
07 Jun 2024	Midweek									
08 Jun 2024	Weekend							choppy	calm/rippled	
09 Jun 2024	Weekend									
10 Jun 2024	Midweek									
11 Jun 2024	Midweek									
12 Jun 2024	Midweek									
13 Jun 2024	Midweek									
14 Jun 2024	Midweek									
15 Jun 2024	Weekend	choppy								
16 Jun 2024	Weekend								choppy	
17 Jun 2024	Midweek									
18 Jun 2024	Midweek								choppy	
19 Jun 2024	Midweek									
20 Jun 2024	Midweek									
21 Jun 2024	Midweek		calm/rippled							
22 Jun 2024	Weekend				choppy	calm/rippled			choppy	
23 Jun 2024	Weekend		calm/rippled				choppy			
24 Jun 2024	Midweek									
25 Jun 2024	Midweek		choppy						calm/rippled	
26 Jun 2024	Midweek									
27 Jun 2024	Midweek									
28 Jun 2024	Midweek									
29 Jun 2024	Weekend	calm/rippled		calm/rippled						
30 Jun 2024	Weekend				calm/rippled					choppy
01 Jul 2024	Weekend						calm/rippled			
02 Jul 2024	Midweek									
03 Jul 2024	Midweek				calm/rippled				choppy	