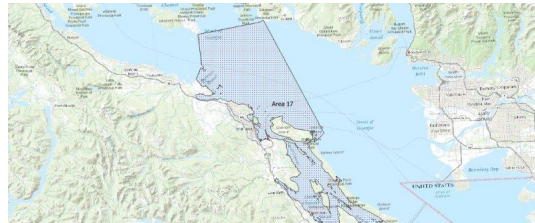


FISHERIES AND OCEANS CANADA

SOUTH COAST ASSESSMENT BULLETIN

CREEL SURVEY DATA REVIEW PACKAGE

Area 17 June 2024



Prepared By:

South Coast Salmon Stock Assessment Section

Sunday 18th August, 2024



Fisheries and Oceans
Canada

Pêches et Océans
Canada



Table 1: Numbers of Interviews conducted contributing to the area by day and access site.

		Brechin		Crofton Ramp		Ladysmith		McDonald Beach		Planetarium	Rocky Point Public Boat Launch	Schooner	
Date	Day Type	AM	PM	AM	PM	AM	PM	AM	PM	PM	PM	AM	PM
29 May 2024	Midweek		4										
30 May 2024	Midweek			1									
31 May 2024	Midweek					4							
01 Jun 2024	Weekend				6		7						
02 Jun 2024	Weekend												
03 Jun 2024	Midweek												
04 Jun 2024	Midweek												
05 Jun 2024	Midweek	7											
06 Jun 2024	Midweek												
07 Jun 2024	Midweek												
08 Jun 2024	Weekend								3				
09 Jun 2024	Weekend	13								3			24
10 Jun 2024	Midweek						2						
11 Jun 2024	Midweek		1										
12 Jun 2024	Midweek			1									
13 Jun 2024	Midweek												
14 Jun 2024	Midweek												
15 Jun 2024	Weekend					3							
16 Jun 2024	Weekend			5									
17 Jun 2024	Midweek												
18 Jun 2024	Midweek												
19 Jun 2024	Midweek												
20 Jun 2024	Midweek	2											
21 Jun 2024	Midweek				11								
22 Jun 2024	Weekend		15		8				2				
23 Jun 2024	Weekend						8				1		4
24 Jun 2024	Midweek		15										
25 Jun 2024	Midweek												
26 Jun 2024	Midweek												
27 Jun 2024	Midweek						3						
28 Jun 2024	Midweek				2								
29 Jun 2024	Weekend											12	
30 Jun 2024	Weekend					1		1					
01 Jul 2024	Weekend												
02 Jul 2024	Midweek		13										
03 Jul 2024	Midweek											3	

Table 2: Daily tally of interviews, catch and effort.

Date	Day	Average Fishing Conditions	Interviews & Log Trips	Chinook	Coho	Sockeye	Halibut	Observed Fishing	Flight Time	Expanded Fishing
29-May-2024	Wednesday	calm/rippled	4							
30-May-2024	Thursday	calm/rippled	1					5	1155	13
31-May-2024	Friday	choppy	4							
01-Jun-2024	Saturday	choppy	13	6				24	1256	67
02-Jun-2024	Sunday		0							
03-Jun-2024	Monday		0							
04-Jun-2024	Tuesday		0							
05-Jun-2024	Wednesday	calm/rippled	9		8					
06-Jun-2024	Thursday		2							
07-Jun-2024	Friday		0					5	1301	14
08-Jun-2024	Saturday	calm/rippled	3	1	1					
09-Jun-2024	Sunday	choppy	40		20			54	1251	148
10-Jun-2024	Monday	choppy	2							
11-Jun-2024	Tuesday	frequent whitecaps	1		1					
12-Jun-2024	Wednesday	calm/rippled	2							
13-Jun-2024	Thursday		0							
14-Jun-2024	Friday		0							
15-Jun-2024	Saturday	calm/rippled	3	3				57	1306	164
16-Jun-2024	Sunday	calm/rippled	5	10	1					
17-Jun-2024	Monday		0					5	1246	14
18-Jun-2024	Tuesday		0							
19-Jun-2024	Wednesday		0							
20-Jun-2024	Thursday	choppy	2		8			11	1247	30
21-Jun-2024	Friday	calm/rippled	11	2	1					
22-Jun-2024	Saturday	choppy	25	1	20			31	1243	86
23-Jun-2024	Sunday	choppy	13	2	17					
24-Jun-2024	Monday	choppy	15		15			27	1251	71
25-Jun-2024	Tuesday		0							
26-Jun-2024	Wednesday		0							
27-Jun-2024	Thursday	calm/rippled	3							
28-Jun-2024	Friday	choppy	2							
29-Jun-2024	Saturday	choppy	12		23					
30-Jun-2024	Sunday	calm/rippled	2		4					
01-Jul-2024	Monday (Canada Day)		0					30	1141	87
02-Jul-2024	Tuesday	calm/rippled	13		10					
03-Jul-2024	Wednesday	choppy	3							
	Totals	choppy	49	2	33			12*		32*
	Totals	choppy	116	23	86			42*		116*

* Average number of boats Observed and Expanded

Table 3: Simple area based cpue (catch per boat trip) expansion.

Day Type	Average Expanded Boats	Number of Days	Total Estimated Effort	CPUE				Retained			
				Chinook	Coho	Sockeye	Halibut	Chinook	Coho	Sockeye	Halibut
Weekend	116	10	1160	0.198	0.741			230	860		
Midweek	32	20	640	0.041	0.673			26	431		

Table 4: Recent years estimates of retained catch and effort.

Year	Month	Total Effort	Chinook Kept	Coho Kept	Sockeye Kept	Halibut Kept
2019	June	1267	16	246		0
2020	June	1310		65		
2021	June	1656	0	1		0
2022	June	946	6	0		0
2023	June	1537	16	1695		0
2024	June	1800	118	1635		0
5-Yr Avg	June	1343	10	401		0

Table 5: Sport Head Recovery Review.

Species	Creel Marked Catch	Creel Mark Rate	Creel Submission Rate	iRec Marked Catch	iRec Mark Rate	iRec Submission Rate	Sport Head Recoveries
---------	--------------------	-----------------	-----------------------	-------------------	----------------	----------------------	-----------------------

Table 6: Guided Proprtions Review.

Data Source	Interviews / Angler Days	Guided Proportion
Creel Interivews	161	3%
iRec Anglers	2630	11%

Figure 1: Proportion of each day's fishing by hour.

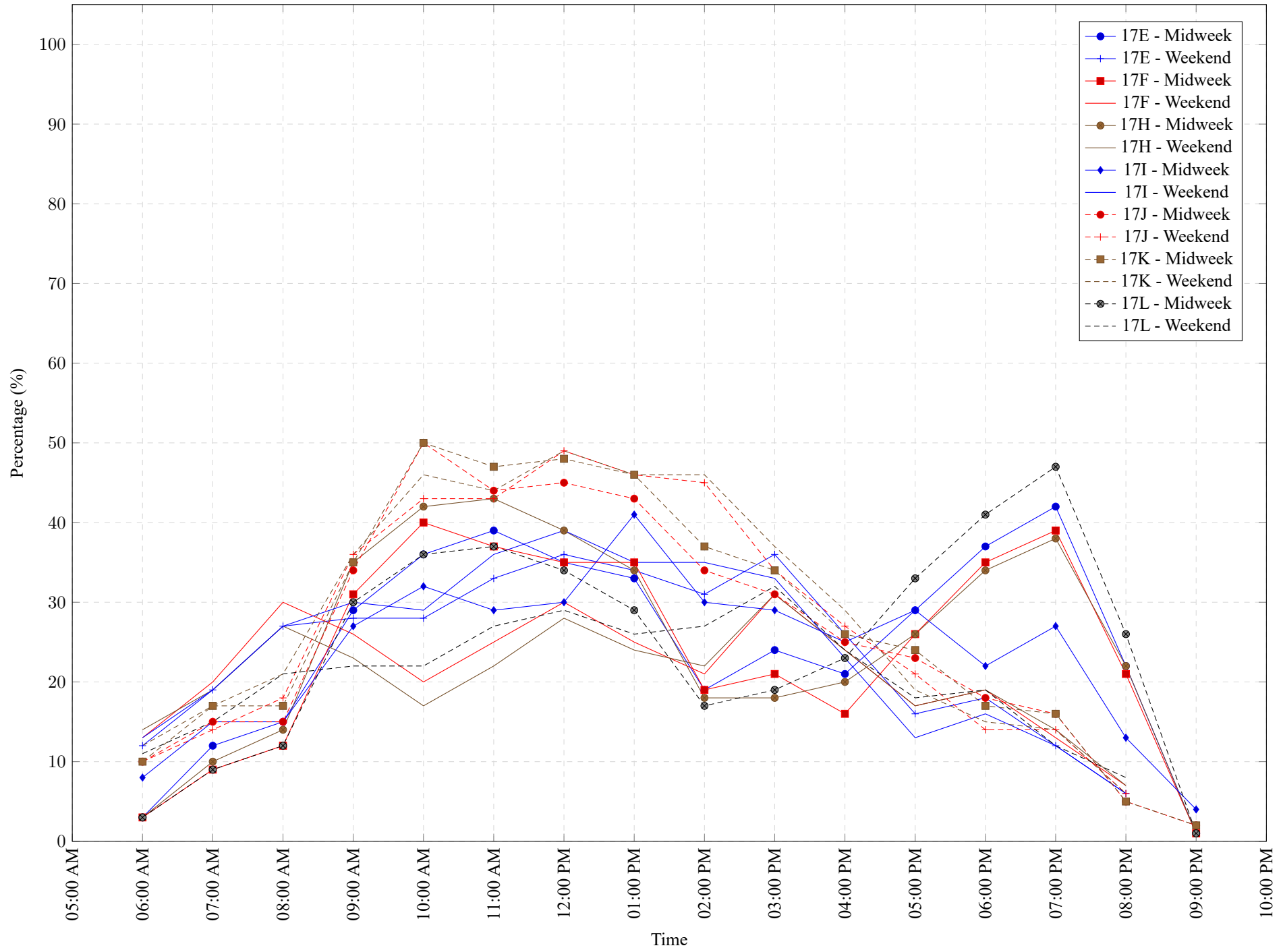


Table 7: Proportion of each day's fishing by hour.

Areas	Day Type	6:00 AM	7:00 AM	8:00 AM	9:00 AM	10:00 AM	11:00 AM	12:00 PM	01:00 PM	02:00 PM	03:00 PM	04:00 PM	05:00 PM	06:00 PM	07:00 PM	08:00 PM	09:00 PM	10:00 PM
17E	Midweek	3%	12%	15%	29%	36%	39%	35%	33%	19%	24%	21%	29%	37%	42%	22%	1%	0%
17E	Weekend	12%	19%	27%	28%	28%	33%	36%	34%	31%	36%	26%	16%	18%	12%	6%	0%	0%
17F	Midweek	3%	9%	12%	31%	40%	37%	35%	35%	19%	21%	16%	26%	35%	39%	21%	1%	0%
17F	Weekend	13%	20%	30%	26%	20%	25%	30%	25%	21%	31%	24%	17%	19%	13%	7%	0%	0%
17H	Midweek	3%	10%	14%	35%	42%	43%	39%	34%	18%	18%	20%	26%	34%	38%	22%	1%	0%
17H	Weekend	14%	19%	27%	23%	17%	22%	28%	24%	22%	31%	24%	17%	19%	14%	7%	0%	0%
17I	Midweek	8%	15%	15%	27%	32%	29%	30%	41%	30%	29%	25%	29%	22%	27%	13%	4%	0%
17I	Weekend	13%	19%	27%	30%	29%	36%	39%	35%	35%	33%	23%	13%	16%	12%	6%	0%	0%
17J	Midweek	10%	15%	15%	34%	50%	44%	45%	43%	34%	31%	25%	23%	18%	16%	5%	2%	0%
17J	Weekend	10%	14%	18%	36%	43%	43%	49%	46%	45%	34%	27%	21%	14%	14%	6%	0%	0%
17K	Midweek	10%	17%	17%	35%	50%	47%	48%	46%	37%	34%	26%	24%	17%	16%	5%	2%	0%
17K	Weekend	12%	17%	21%	36%	46%	44%	49%	46%	46%	37%	29%	19%	15%	14%	6%	0%	0%
17L	Midweek	3%	9%	12%	30%	36%	37%	34%	29%	17%	19%	23%	33%	41%	47%	26%	1%	0%
17L	Weekend	11%	15%	21%	22%	22%	27%	29%	26%	27%	32%	24%	18%	19%	12%	8%	0%	0%

Table 8: Daily Fishing Conditions.

Date	Day Type	Brechin	Crofton Ramp	Ladysmith	McDonald Beach	Planetarium	Rocky Point Public Boat Launch	Schooner
29 May 2024	Midweek	calm/rippled						
30 May 2024	Midweek		calm/rippled					
31 May 2024	Midweek			choppy				
01 Jun 2024	Weekend		choppy	choppy				
02 Jun 2024	Weekend							
03 Jun 2024	Midweek							
04 Jun 2024	Midweek							
05 Jun 2024	Midweek	calm/rippled						
06 Jun 2024	Midweek							
07 Jun 2024	Midweek							
08 Jun 2024	Weekend				calm/rippled			
09 Jun 2024	Weekend	frequent whitecaps				calm/rippled		calm/rippled
10 Jun 2024	Midweek			choppy				
11 Jun 2024	Midweek	frequent whitecaps						
12 Jun 2024	Midweek		calm/rippled					
13 Jun 2024	Midweek							
14 Jun 2024	Midweek							
15 Jun 2024	Weekend			calm/rippled				
16 Jun 2024	Weekend		calm/rippled					
17 Jun 2024	Midweek							
18 Jun 2024	Midweek							
19 Jun 2024	Midweek							
20 Jun 2024	Midweek	choppy						
21 Jun 2024	Midweek		calm/rippled					
22 Jun 2024	Weekend	frequent whitecaps	calm/rippled		calm/rippled			
23 Jun 2024	Weekend			frequent whitecaps			calm/rippled	calm/rippled
24 Jun 2024	Midweek	choppy						
25 Jun 2024	Midweek							
26 Jun 2024	Midweek							
27 Jun 2024	Midweek			calm/rippled				
28 Jun 2024	Midweek		choppy					
29 Jun 2024	Weekend							choppy
30 Jun 2024	Weekend			calm/rippled	calm/rippled			
01 Jul 2024	Weekend							
02 Jul 2024	Midweek	calm/rippled						
03 Jul 2024	Midweek							choppy