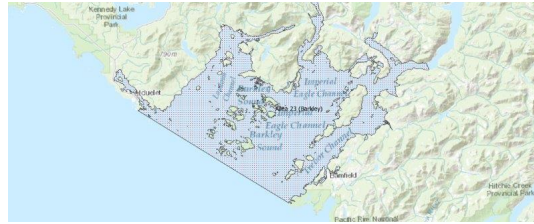


FISHERIES AND OCEANS CANADA

SOUTH COAST ASSESSMENT BULLETIN

CREEL SURVEY DATA REVIEW PACKAGE

Area 23 (Barkley) June 2024



Prepared By:
South Coast Salmon Stock Assessment Section

Tuesday 6th August, 2024



Fisheries and Oceans
Canada

Pêches et Océans
Canada



Table 1: Numbers of Interviews conducted contributing to the area by day and access site.

		China Creek		Clutesi Marina	Clutesi Ramp			Island West			McKay Bay Gas Dock			Mills Landing			Pat Leslie Boat Launch		Poett Nook			Ucluelet Gov Dock		
Date	Day Type	MD	PM	AM	AM	MD	PM	AM	MD	PM	AM	MD	PM	AM	MD	PM	AM	PM	AM	MD	PM	AM	MD	PM
29 May 2024	Midweek																							
30 May 2024	Midweek																							
31 May 2024	Midweek																							
01 Jun 2024	Weekend																					1		
02 Jun 2024	Weekend																							
03 Jun 2024	Midweek																							
04 Jun 2024	Midweek														4									
05 Jun 2024	Midweek											2												
06 Jun 2024	Midweek																			6				2
07 Jun 2024	Midweek									1														
08 Jun 2024	Weekend												3										5	
09 Jun 2024	Weekend									8										2		9		
10 Jun 2024	Midweek															2							3	
11 Jun 2024	Midweek							1				10											1	
12 Jun 2024	Midweek																	4						
13 Jun 2024	Midweek																							
14 Jun 2024	Midweek									1														
15 Jun 2024	Weekend												4									3		
16 Jun 2024	Weekend									5		5						2						2
17 Jun 2024	Midweek									5						14								
18 Jun 2024	Midweek											3												
19 Jun 2024	Midweek																	8				1		
20 Jun 2024	Midweek												7										4	
21 Jun 2024	Midweek									3														
22 Jun 2024	Weekend	2																					5	
23 Jun 2024	Weekend												17											9
24 Jun 2024	Midweek														7					7				3
25 Jun 2024	Midweek																							
26 Jun 2024	Midweek									1					3									
27 Jun 2024	Midweek												5										7	3
28 Jun 2024	Midweek																1							
29 Jun 2024	Weekend									1													4	
30 Jun 2024	Weekend		2																	16				
01 Jul 2024	Weekend												11										8	
02 Jul 2024	Midweek	1																						8
03 Jul 2024	Midweek																		6				9	

Table 2: Daily tally of interviews, catch and effort.

Date	Day	Average Fishing Conditions	Interviews & Log Trips	Chinook	Coho	Sockeye	Halibut	Observed Fishing	Flight Time	Expanded Fishing
29-May-2024	Wednesday		0							
30-May-2024	Thursday		0							
31-May-2024	Friday		0							
01-Jun-2024	Saturday	calm/rippled	2	4				35	0741	45
02-Jun-2024	Sunday		0							
03-Jun-2024	Monday		0							
04-Jun-2024	Tuesday	large swells	5	6			2			
05-Jun-2024	Wednesday	large swells	5	13			2	15	0733	22
06-Jun-2024	Thursday	frequent whitecaps	9	22						
07-Jun-2024	Friday	calm/rippled	8	18						
08-Jun-2024	Saturday	choppy	14	37	7		3	69	0738	87
09-Jun-2024	Sunday	frequent whitecaps	21	55	10					
10-Jun-2024	Monday	calm/rippled	8	19	11					
11-Jun-2024	Tuesday	large swells	16	36	10					
12-Jun-2024	Wednesday	frequent whitecaps	6	13	9			44	0736	62
13-Jun-2024	Thursday	frequent whitecaps	1	1						
14-Jun-2024	Friday	choppy	7	18	17					
15-Jun-2024	Saturday	frequent whitecaps	6	8	5			68	0731	87
16-Jun-2024	Sunday	choppy	21	43	2					
17-Jun-2024	Monday	choppy	25	53	17					
18-Jun-2024	Tuesday	calm/rippled	2	7	3					
19-Jun-2024	Wednesday	choppy	10	10	10	1				
20-Jun-2024	Thursday	calm/rippled	12	15	3		2	48	0729	68
21-Jun-2024	Friday	calm/rippled	5	20	6					
22-Jun-2024	Saturday	choppy	24	28	34					
23-Jun-2024	Sunday	frequent whitecaps	16	33	22			80	0737	101
24-Jun-2024	Monday	calm/rippled	10	8	5			41	0733	59
25-Jun-2024	Tuesday	calm/rippled	5	16	1					
26-Jun-2024	Wednesday	calm/rippled	5	18	14		4			
27-Jun-2024	Thursday	choppy	13	32	27					
28-Jun-2024	Friday	calm/rippled	6	25	17					
29-Jun-2024	Saturday	calm/rippled	7	10	3					
30-Jun-2024	Sunday	choppy	19	17	20			62	1230	148
01-Jul-2024	Monday (Canada Day)	choppy	21	35	34			53	0736	68
02-Jul-2024	Tuesday	frequent whitecaps	11	21	36					
03-Jul-2024	Wednesday	choppy	17	23	26			67	0858	97
	Totals	choppy	158	350	150	1	10	37*		53*
	Totals	choppy	130	235	103		3	63*		94*

* Average number of boats Observed and Expanded

Table 3: Simple area based cpue (catch per boat trip) expansion.

Day Type	Average Expanded Boats	Number of Days	Total Estimated Effort	CPUE				Retained			
				Chinook	Coho	Sockeye	Halibut	Chinook	Coho	Sockeye	Halibut
Weekend	94	10	940	1.808	0.792		0.023	1700	744		22
Midweek	53	20	1060	2.215	0.949	0.006	0.063	2348	1006	6	67

Table 4: Recent years estimates of retained catch and effort.

Year	Month	Total Effort	Chinook Kept	Coho Kept	Sockeye Kept	Halibut Kept
2019	June	2970	4951	287	36	15
2020	June	1844	1772	315		169
2021	June	1674	3129	485	24	2
2022	June	1657	3116	915	53	16
2023	June	2167	3966	216	13	11
2024	June	2078	3678	1878	14	58
5-Yr Avg	June	2062	3387	444	32	43

Table 5: Sport Head Recovery Review.

Species	Creel Marked Catch	Creel Mark Rate	Creel Submission Rate	iRec Marked Catch	iRec Mark Rate	iRec Submission Rate	Sport Head Recoveries
---------	--------------------	-----------------	-----------------------	-------------------	----------------	----------------------	-----------------------

Table 6: Guided Proprtions Review.

Data Source	Interviews / Angler Days	Guided Proportion
Creel Interivews	237	34%
iRec Anglers	4567	27%

Figure 1: Proportion of each day's fishing by hour.

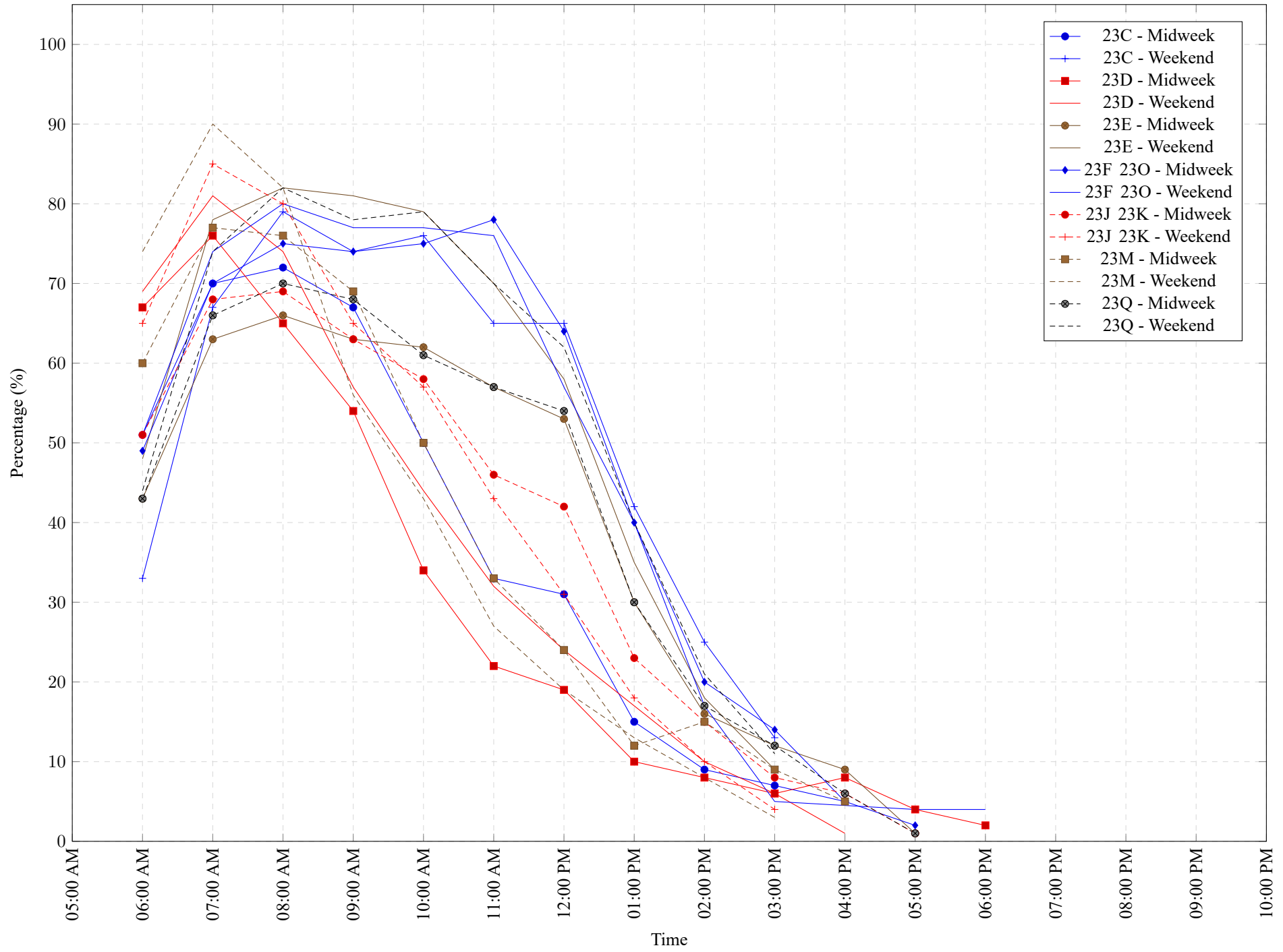


Table 7: Proportion of each day's fishing by hour.

Areas	Day Type	6:00 AM	7:00 AM	8:00 AM	9:00 AM	10:00 AM	11:00 AM	12:00 PM	01:00 PM	02:00 PM	03:00 PM	04:00 PM	05:00 PM	06:00 PM	07:00 PM	08:00 PM	09:00 PM	10:00 PM
23C	Midweek	51%	70%	72%	67%	50%	33%	31%	15%	9%	7%	5%	0%	0%	0%	0%	0%	0%
23C	Weekend	33%	67%	79%	74%	76%	65%	65%	42%	25%	13%	0%	0%	0%	0%	0%	0%	0%
23D	Midweek	67%	76%	65%	54%	34%	22%	19%	10%	8%	6%	8%	4%	2%	0%	0%	0%	0%
23D	Weekend	69%	81%	74%	57%	44%	32%	24%	17%	10%	6%	1%	0%	0%	0%	0%	0%	0%
23E	Midweek	43%	63%	66%	63%	62%	57%	53%	30%	16%	12%	9%	1%	0%	0%	0%	0%	0%
23E	Weekend	48%	78%	82%	81%	79%	70%	58%	35%	18%	9%	0%	0%	0%	0%	0%	0%	0%
23F 23O	Midweek	49%	70%	75%	74%	75%	78%	64%	40%	20%	14%	5%	2%	0%	0%	0%	0%	0%
23F 23O	Weekend	51%	74%	80%	77%	77%	76%	57%	40%	17%	5%	0%	4%	4%	0%	0%	0%	0%
23J 23K	Midweek	51%	68%	69%	63%	58%	46%	42%	23%	15%	8%	6%	1%	0%	0%	0%	0%	0%
23J 23K	Weekend	65%	85%	80%	65%	57%	43%	31%	18%	10%	4%	0%	0%	0%	0%	0%	0%	0%
23M	Midweek	60%	77%	76%	69%	50%	33%	24%	12%	15%	9%	5%	0%	0%	0%	0%	0%	0%
23M	Weekend	74%	90%	82%	56%	43%	27%	19%	13%	8%	3%	0%	0%	0%	0%	0%	0%	0%
23Q	Midweek	43%	66%	70%	68%	61%	57%	54%	30%	17%	12%	6%	1%	0%	0%	0%	0%	0%
23Q	Weekend	44%	74%	82%	78%	79%	70%	62%	40%	21%	11%	0%	0%	0%	0%	0%	0%	0%

Table 8: Daily Fishing Conditions.

Date	Day Type	China Creek	Clutesi Marina	Clutesi Ramp	Island West	McKay Bay Gas Dock	Mills Landing	Pat Leslie Boat Launch	Poett Nook	Ucluelet Gov Dock
29 May 2024	Midweek									
30 May 2024	Midweek									
31 May 2024	Midweek									
01 Jun 2024	Weekend									calm/rippled
02 Jun 2024	Weekend									
03 Jun 2024	Midweek									
04 Jun 2024	Midweek						large swells			
05 Jun 2024	Midweek					large swells				
06 Jun 2024	Midweek								frequent whitecaps	choppy
07 Jun 2024	Midweek				calm/rippled					
08 Jun 2024	Weekend					frequent whitecaps				choppy
09 Jun 2024	Weekend			frequent whitecaps					frequent whitecaps	choppy
10 Jun 2024	Midweek						choppy			calm/rippled
11 Jun 2024	Midweek				frequent whitecaps	large swells				frequent whitecaps
12 Jun 2024	Midweek								frequent whitecaps	
13 Jun 2024	Midweek			frequent whitecaps						
14 Jun 2024	Midweek									choppy
15 Jun 2024	Weekend				choppy	frequent whitecaps				
16 Jun 2024	Weekend			choppy			choppy	calm/rippled		calm/rippled
17 Jun 2024	Midweek			choppy	calm/rippled	choppy				
18 Jun 2024	Midweek									calm/rippled
19 Jun 2024	Midweek								choppy	
20 Jun 2024	Midweek		calm/rippled			choppy				calm/rippled
21 Jun 2024	Midweek				calm/rippled					
22 Jun 2024	Weekend	frequent whitecaps				choppy				frequent whitecaps
23 Jun 2024	Weekend								frequent whitecaps	frequent whitecaps
24 Jun 2024	Midweek					calm/rippled				calm/rippled
25 Jun 2024	Midweek				calm/rippled		calm/rippled			
26 Jun 2024	Midweek									calm/rippled
27 Jun 2024	Midweek					frequent whitecaps				choppy
28 Jun 2024	Midweek							calm/rippled		
29 Jun 2024	Weekend				calm/rippled					calm/rippled
30 Jun 2024	Weekend	frequent whitecaps							choppy	
01 Jul 2024	Weekend			choppy		frequent whitecaps				choppy
02 Jul 2024	Midweek	large swells								frequent whitecaps
03 Jul 2024	Midweek								choppy	choppy