

# FISHERIES AND OCEANS CANADA

## SOUTH COAST ASSESSMENT BULLETIN

### CREEL SURVEY DATA REVIEW PACKAGE

---

## Area 28 June 2024



---

*Prepared By:*

South Coast Salmon Stock Assessment Section

Sunday 18<sup>th</sup> August, 2024



Fisheries and Oceans  
Canada

Pêches et Océans  
Canada



Table 1: Numbers of Interviews conducted contributing to the area by day and access site.

		Cates Park Boat Ramp		Gibson's Marina		McDonald Beach		Planetarium		Porteau Cove		Rocky Point Public Boat Launch PM	Sewell's East	Squamish Boat Launch		Thunderbird Marina	
Date	Day Type	AM	PM	AM	PM	AM	PM	AM	PM	AM	PM		PM	AM	PM	AM	PM
29 May 2024	Midweek																
30 May 2024	Midweek																
31 May 2024	Midweek																
01 Jun 2024	Weekend							1									
02 Jun 2024	Weekend				1					1							
03 Jun 2024	Midweek																
04 Jun 2024	Midweek																
05 Jun 2024	Midweek								2								
06 Jun 2024	Midweek																
07 Jun 2024	Midweek											4					
08 Jun 2024	Weekend						2								2		
09 Jun 2024	Weekend								5							1	
10 Jun 2024	Midweek																
11 Jun 2024	Midweek		1														
12 Jun 2024	Midweek			1													
13 Jun 2024	Midweek																
14 Jun 2024	Midweek												1				
15 Jun 2024	Weekend		5														
16 Jun 2024	Weekend			4						2							
17 Jun 2024	Midweek																
18 Jun 2024	Midweek																1
19 Jun 2024	Midweek					5			1						1		
20 Jun 2024	Midweek												2				
21 Jun 2024	Midweek	4															
22 Jun 2024	Weekend								5								
23 Jun 2024	Weekend									1		4					
24 Jun 2024	Midweek																
25 Jun 2024	Midweek																
26 Jun 2024	Midweek				1												
27 Jun 2024	Midweek		2														
28 Jun 2024	Midweek																
29 Jun 2024	Weekend	5													1		
30 Jun 2024	Weekend					2											
01 Jul 2024	Weekend																
02 Jul 2024	Midweek															1	
03 Jul 2024	Midweek			1													

Table 2: Daily tally of interviews, catch and effort.

Date	Day	Average Fishing Conditions	Interviews & Log Trips	Chinook	Coho	Sockeye	Halibut	Observed Fishing	Flight Time	Expanded Fishing
29-May-2024	Wednesday		10							
30-May-2024	Thursday		9					12	1233	28
31-May-2024	Friday		2							
01-Jun-2024	Saturday	choppy	1					18	1338	36
02-Jun-2024	Sunday	calm/rippled	2							
03-Jun-2024	Monday		0							
04-Jun-2024	Tuesday		0							
05-Jun-2024	Wednesday	calm/rippled	2							
06-Jun-2024	Thursday		1							
07-Jun-2024	Friday	choppy	7					12	1340	33
08-Jun-2024	Saturday	calm/rippled	6		1					
09-Jun-2024	Sunday	calm/rippled	7					17	1333	34
10-Jun-2024	Monday		0							
11-Jun-2024	Tuesday	choppy	1							
12-Jun-2024	Wednesday	frequent whitecaps	2							
13-Jun-2024	Thursday		1							
14-Jun-2024	Friday	choppy	4							
15-Jun-2024	Saturday	choppy	5					31	1346	63
16-Jun-2024	Sunday	calm/rippled	6	1						
17-Jun-2024	Monday		2					10	1326	27
18-Jun-2024	Tuesday	calm/rippled	1							
19-Jun-2024	Wednesday	calm/rippled	7							
20-Jun-2024	Thursday	calm/rippled	2		1			15	1327	40
21-Jun-2024	Friday	calm/rippled	5							
22-Jun-2024	Saturday	calm/rippled	7					35	1324	70
23-Jun-2024	Sunday	calm/rippled	5		1					
24-Jun-2024	Monday		1		4			10	1330	27
25-Jun-2024	Tuesday		1							
26-Jun-2024	Wednesday	calm/rippled	1							
27-Jun-2024	Thursday	calm/rippled	2							
28-Jun-2024	Friday		0							
29-Jun-2024	Saturday	calm/rippled	6							
30-Jun-2024	Sunday	calm/rippled	2							
01-Jul-2024	Monday (Canada Day)	calm/rippled	2					16	1221	29
02-Jul-2024	Tuesday		0							
03-Jul-2024	Wednesday	choppy	1							
	Totals	calm/rippled	40		5			12*		32*
	Totals	calm/rippled	47	1	2			25*		51*

\* Average number of boats Observed and Expanded

Table 3: Simple area based cpue (catch per boat trip) expansion.

Day Type	Average Expanded Boats	Number of Days	Total Estimated Effort	CPUE				Retained			
				Chinook	Coho	Sockeye	Halibut	Chinook	Coho	Sockeye	Halibut
Midweek	32	20	640		0.125				80		
Weekend	51	10	510	0.021	0.043			11	22		

Table 4: Recent years estimates of retained catch and effort.

Year	Month	Total Effort	Chinook Kept	Coho Kept	Sockeye Kept	Halibut Kept
2019	June	441	0	0		0
2020	June	1248	26	58		10
2021	June	894	0	17		0
2022	June	399	1			0
2023	June	498	0	573		0
2024	June	1213	11	622		0
5-Yr Avg	June	696	5	162		2

Table 5: Sport Head Recovery Review.

Species	Creel Marked Catch	Creel Mark Rate	Creel Submission Rate	iRec Marked Catch	iRec Mark Rate	iRec Submission Rate	Sport Head Recoveries
---------	--------------------	-----------------	-----------------------	-------------------	----------------	----------------------	-----------------------

Table 6: Guided Proprtions Review.

Data Source	Interviews / Angler Days	Guided Proportion
Creel Interivews	68	0%
iRec Anglers	1703	25%

Figure 1: Proportion of each day's fishing by hour.

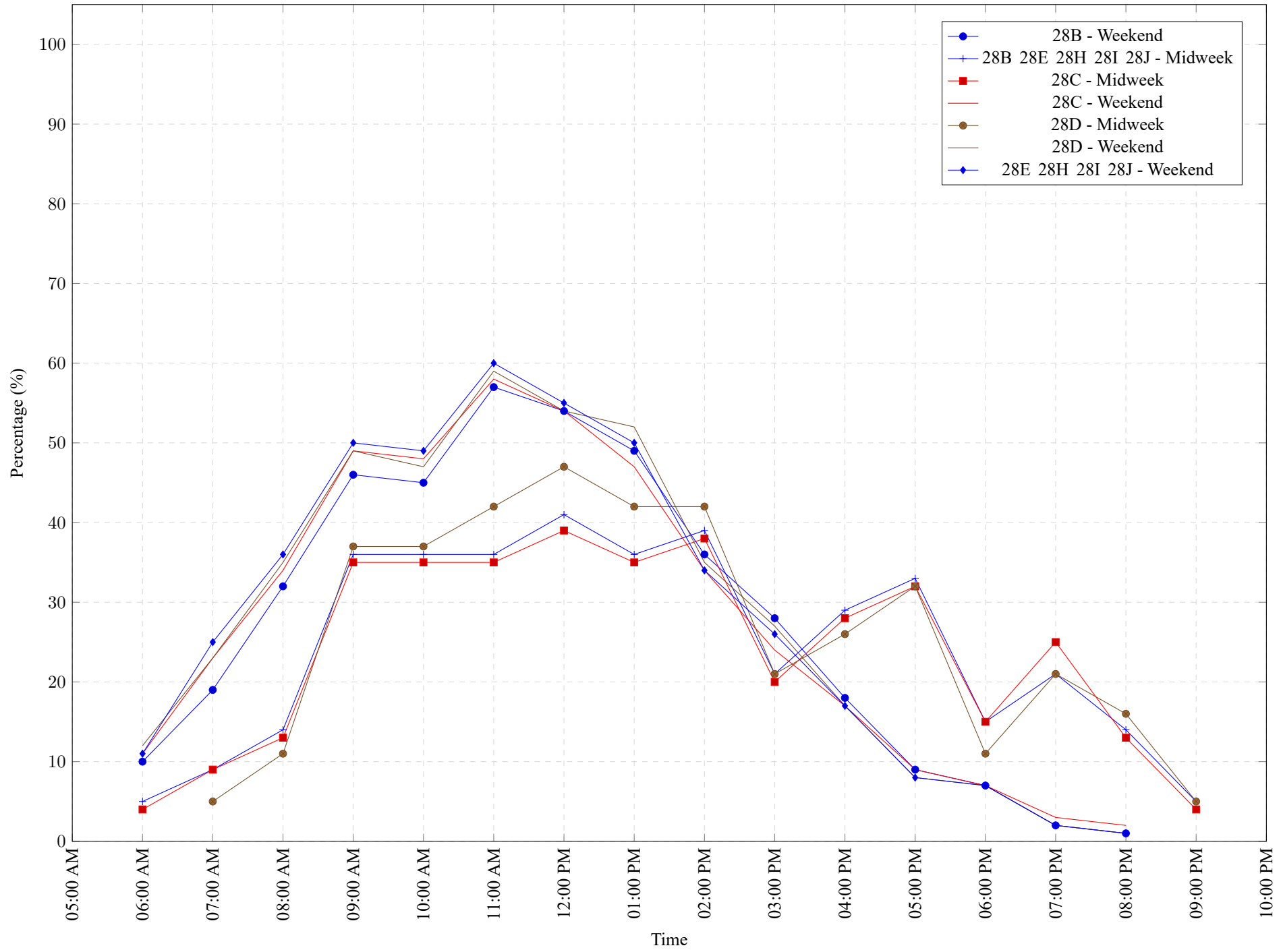


Table 7: Proportion of each day's fishing by hour.

Areas					Day Type	6:00 AM	7:00 AM	8:00 AM	9:00 AM	10:00 AM	11:00 AM	12:00 PM	01:00 PM	02:00 PM	03:00 PM	04:00 PM	05:00 PM	06:00 PM	07:00 PM	08:00 PM	09:00 PM	10:00 PM
28B					Weekend	10%	19%	32%	46%	45%	57%	54%	49%	36%	28%	18%	9%	7%	2%	1%	0%	0%
28B	28E	28H	28I	28J	Midweek	5%	9%	14%	36%	36%	36%	41%	36%	39%	21%	29%	33%	15%	21%	14%	5%	0%
28C					Midweek	4%	9%	13%	35%	35%	35%	39%	35%	38%	20%	28%	32%	15%	25%	13%	4%	0%
28C					Weekend	11%	23%	34%	49%	48%	58%	54%	47%	34%	24%	17%	9%	7%	3%	2%	0%	0%
28D					Midweek	0%	5%	11%	37%	37%	42%	47%	42%	42%	21%	26%	32%	11%	21%	16%	5%	0%
28D					Weekend	12%	23%	35%	49%	47%	59%	54%	52%	35%	27%	17%	8%	7%	2%	1%	0%	0%
28E	28H	28I	28J		Weekend	11%	25%	36%	50%	49%	60%	55%	50%	34%	26%	17%	8%	7%	2%	1%	0%	0%

**Table 8: Daily Fishing Conditions.**

Date	Day Type	Cates Park Boat Ramp	Gibson's Marina	McDonald Beach	Planetarium	Porteau Cove	Rocky Point Public Boat Launch	Sewell's East	Squamish Boat Launch	Thunderbird Marina
29 May 2024	Midweek									
30 May 2024	Midweek									
31 May 2024	Midweek									
01 Jun 2024	Weekend				choppy					
02 Jun 2024	Weekend		calm/rippled			calm/rippled				
03 Jun 2024	Midweek									
04 Jun 2024	Midweek									
05 Jun 2024	Midweek				calm/rippled					
06 Jun 2024	Midweek									
07 Jun 2024	Midweek						choppy			
08 Jun 2024	Weekend			calm/rippled					calm/rippled	
09 Jun 2024	Weekend				calm/rippled					calm/rippled
10 Jun 2024	Midweek									
11 Jun 2024	Midweek	choppy								
12 Jun 2024	Midweek		frequent whitecaps							
13 Jun 2024	Midweek									
14 Jun 2024	Midweek							choppy		
15 Jun 2024	Weekend	choppy								
16 Jun 2024	Weekend		calm/rippled			calm/rippled				
17 Jun 2024	Midweek									
18 Jun 2024	Midweek									calm/rippled
19 Jun 2024	Midweek		calm/rippled		calm/rippled				calm/rippled	
20 Jun 2024	Midweek							calm/rippled		
21 Jun 2024	Midweek	calm/rippled								
22 Jun 2024	Weekend				calm/rippled					
23 Jun 2024	Weekend					calm/rippled	calm/rippled			
24 Jun 2024	Midweek									
25 Jun 2024	Midweek									
26 Jun 2024	Midweek		calm/rippled							
27 Jun 2024	Midweek	calm/rippled								
28 Jun 2024	Midweek									
29 Jun 2024	Weekend	calm/rippled							calm/rippled	
30 Jun 2024	Weekend			calm/rippled						
01 Jul 2024	Weekend									calm/rippled
02 Jul 2024	Midweek									
03 Jul 2024	Midweek		choppy							