

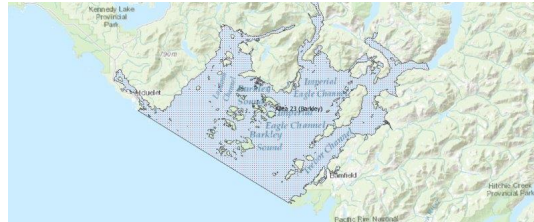
# FISHERIES AND OCEANS CANADA

## SOUTH COAST ASSESSMENT BULLETIN

### CREEL SURVEY DATA REVIEW PACKAGE

---

## Area 23 (Barkley) July 2024



---

*Prepared By:*  
South Coast Salmon Stock Assessment Section

Sunday 24<sup>th</sup> November, 2024



Fisheries and Oceans  
Canada

Pêches et Océans  
Canada



Table 1: Numbers of Interviews conducted contributing to the area by day and access site.

		China Creek		Clutesi Marina	Clutesi Ramp			Island West			McKay Bay Gas Dock			Mills Landing			Pat Leslie Boat Launch			Poett Nook		Tofino Resort and Marina AM	Ucluelet Gov Dock		
Date	Day Type	MD	PM	MD	AM	MD	PM	AM	MD	PM	AM	MD	PM	AM	MD	PM	AM	MD	PM	AM	MD	AM	AM	MD	PM
28 Jun 2024	Midweek																1							4	
29 Jun 2024	Weekend									1											16				
30 Jun 2024	Weekend		2																						
01 Jul 2024	Weekend				1							11												8	
02 Jul 2024	Midweek	1																							8
03 Jul 2024	Midweek																			6					9
04 Jul 2024	Midweek					3		1		4				5											
05 Jul 2024	Midweek						1			4															
06 Jul 2024	Weekend											9													3
07 Jul 2024	Weekend			1		1					5						7								
08 Jul 2024	Midweek												4											6	
09 Jul 2024	Midweek																				10				5
10 Jul 2024	Midweek							1								3									
11 Jul 2024	Midweek						5																	17	
12 Jul 2024	Midweek								4																
13 Jul 2024	Weekend											14													9
14 Jul 2024	Weekend																				14				
15 Jul 2024	Midweek				2				6		4													6	
16 Jul 2024	Midweek																							3	
17 Jul 2024	Midweek											12													2
18 Jul 2024	Midweek																	2							
19 Jul 2024	Midweek										14														3
20 Jul 2024	Weekend						6																	5	
21 Jul 2024	Weekend																								
22 Jul 2024	Midweek				2									2											10
23 Jul 2024	Midweek								1		5														
24 Jul 2024	Midweek					3													3						
25 Jul 2024	Midweek						2								4									11	
26 Jul 2024	Midweek			1																				3	
27 Jul 2024	Weekend				1										5										6
28 Jul 2024	Weekend											12													
29 Jul 2024	Midweek																				14				4
30 Jul 2024	Midweek	1								6		6													
31 Jul 2024	Midweek				2													3							
01 Aug 2024	Midweek							3																	9
02 Aug 2024	Midweek					6																			
03 Aug 2024	Weekend												14									1		2	

Table 2: Daily tally of interviews, catch and effort.

Date	Day	Average Fishing Conditions	Interviews & Log Trips	Chinook	Coho	Sockeye	Halibut	Observed Fishing	Flight Time	Expanded Fishing
28-Jun-2024	Friday	calm/rippled	6	25	17					
29-Jun-2024	Saturday	calm/rippled	7	10	3					
30-Jun-2024	Sunday	choppy	19	17	20			62	1230	188
01-Jul-2024	Monday (Canada Day)	choppy	21	35	34			53	0736	71
02-Jul-2024	Tuesday	frequent whitecaps	11	21	36					
03-Jul-2024	Wednesday	choppy	17	23	26			67	0858	91
04-Jul-2024	Thursday	choppy	10	34	19					
05-Jul-2024	Friday	calm/rippled	7	11	21					
06-Jul-2024	Saturday	choppy	12	20	18			90	0735	120
07-Jul-2024	Sunday	calm/rippled	14	20	21					
08-Jul-2024	Monday	calm/rippled	11	22	17					
09-Jul-2024	Tuesday	choppy	18	29	6		1	44	0736	64
10-Jul-2024	Wednesday	choppy	5	5						
11-Jul-2024	Thursday	frequent whitecaps	22	29	23					
12-Jul-2024	Friday	choppy	5	12	4					
13-Jul-2024	Saturday	frequent whitecaps	27	41	8			97	0733	130
14-Jul-2024	Sunday	frequent whitecaps	20	21	3					
15-Jul-2024	Monday	choppy	16	38	4					
16-Jul-2024	Tuesday	calm/rippled	4	13				61	1319	259
17-Jul-2024	Wednesday	frequent whitecaps	14	18	3					
18-Jul-2024	Thursday	choppy	2	1						
19-Jul-2024	Friday	choppy	17	12	3					
20-Jul-2024	Saturday	choppy	11	12	11					
21-Jul-2024	Sunday		0							
22-Jul-2024	Monday	frequent whitecaps	17	20	4					
23-Jul-2024	Tuesday	choppy	7	16	2					
24-Jul-2024	Wednesday	choppy	6	1	2					
25-Jul-2024	Thursday	choppy	17	21	9			101	0736	146
26-Jul-2024	Friday	calm/rippled	5	12	1		1			
27-Jul-2024	Saturday	choppy	14	22	14					
28-Jul-2024	Sunday	calm/rippled	12	16	9			129	0844	162
29-Jul-2024	Monday	choppy	23	12	4					
30-Jul-2024	Tuesday	choppy	17	31	2					
31-Jul-2024	Wednesday	choppy	6	4				87	1123	161
01-Aug-2024	Thursday	calm/rippled	3	2				82	0739	117
02-Aug-2024	Friday	choppy	16	17	9					
03-Aug-2024	Saturday	calm/rippled	18	12						
	Totals	choppy	257	385	186		2	72*		144*
	Totals	choppy	131	187	118			92*		121*

\* Average number of boats Observed and Expanded

**Table 3: Simple area based cpue (catch per boat trip) expansion.**

Day Type	Average Expanded Boats	Number of Days	Total Estimated Effort	CPUE				Retained			
				Chinook	Coho	Sockeye	Halibut	Chinook	Coho	Sockeye	Halibut
Weekend	121	9	1089	1.427	0.901			1554	981		
Midweek	144	22	3168	1.498	0.724		0.008	4746	2294		25

**Table 4: Recent years estimates of retained catch and effort.**

Year	Month	Total Effort	Chinook Kept	Coho Kept	Sockeye Kept	Halibut Kept
2019	July	4558	4334	5283	6	51
2020	July	1963	2231	184	254	57
2021	July	2963	4253	2842	37	11
2022	July	3755	4487	4478	118	38
2023	July	3101	2648	1437	2291	33
2024	July	4394	6200	2809	0	5
5-Yr Avg	July	3268	3591	2845	541	38

**Table 5: Sport Head Recovery Review.**

Species	Creel Marked Catch	Creel Mark Rate	Creel Submission Rate	iRec Marked Catch	iRec Mark Rate	iRec Submission Rate	Sport Head Recoveries
Coho	821	35%	2%	637	44%	2%	13
Chinook	2070	45%	2%	1551	36%	3%	47

**Table 6: Guided Proprtions Review.**

Data Source	Interviews / Angler Days	Guided Proportion
Creel Interivews	372	31%
iRec Anglers	6692	27%

Figure 1: Proportion of each day's fishing by hour.

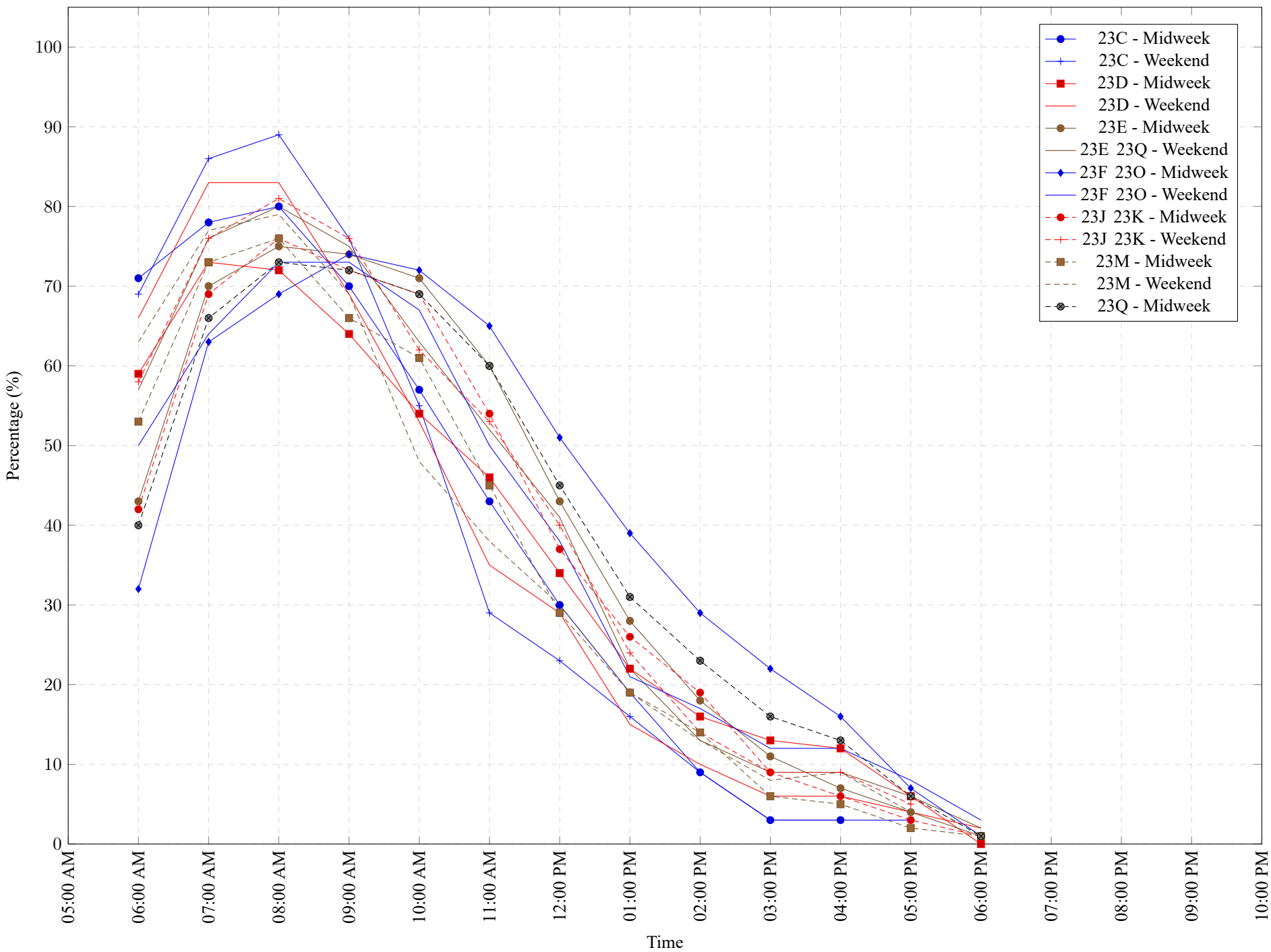


Table 7: Proportion of each day's fishing by hour.

Areas	Day Type	6:00 AM	7:00 AM	8:00 AM	9:00 AM	10:00 AM	11:00 AM	12:00 PM	01:00 PM	02:00 PM	03:00 PM	04:00 PM	05:00 PM	06:00 PM	07:00 PM	08:00 PM	09:00 PM	10:00 PM
23C	Midweek	71%	78%	80%	70%	57%	43%	30%	19%	9%	3%	3%	0%	0%	0%	0%	0%	0%
23C	Weekend	69%	86%	89%	76%	55%	29%	23%	16%	9%	3%	3%	3%	0%	0%	0%	0%	0%
23D	Midweek	59%	73%	72%	64%	54%	46%	34%	22%	16%	13%	12%	6%	0%	0%	0%	0%	0%
23D	Weekend	66%	83%	83%	69%	53%	35%	29%	15%	10%	6%	6%	4%	2%	0%	0%	0%	0%
23E	Midweek	43%	70%	75%	74%	71%	60%	43%	28%	18%	11%	7%	4%	1%	0%	0%	0%	0%
23E 23Q	Weekend	57%	76%	80%	75%	63%	52%	41%	22%	13%	9%	9%	6%	2%	0%	0%	0%	0%
23F 23O	Midweek	32%	63%	69%	74%	72%	65%	51%	39%	29%	22%	16%	7%	1%	0%	0%	0%	0%
23F 23O	Weekend	50%	64%	73%	73%	67%	50%	38%	21%	17%	12%	12%	8%	3%	0%	0%	0%	0%
23J 23K	Midweek	42%	69%	76%	72%	69%	54%	37%	26%	19%	9%	6%	3%	1%	0%	0%	0%	0%
23J 23K	Weekend	58%	76%	81%	76%	62%	53%	40%	24%	14%	9%	9%	5%	0%	0%	0%	0%	0%
23M	Midweek	53%	73%	76%	66%	61%	45%	29%	19%	14%	6%	5%	2%	1%	0%	0%	0%	0%
23M	Weekend	63%	77%	79%	69%	48%	38%	30%	19%	13%	8%	9%	4%	0%	0%	0%	0%	0%
23Q	Midweek	40%	66%	73%	72%	69%	60%	45%	31%	23%	16%	13%	6%	1%	0%	0%	0%	0%

Table 8: Daily Fishing Conditions.

Date	Day Type	China Creek	Clutesi Marina	Clutesi Ramp	Island West	McKay Bay Gas Dock	Mills Landing	Pat Leslie Boat Launch	Poett Nook	Tofino Resort and Marina	Ucluelet Gov Dock
28 Jun 2024	Midweek	frequent whitecaps			calm/rippled			calm/rippled	choppy		calm/rippled
29 Jun 2024	Weekend										
30 Jun 2024	Weekend										
01 Jul 2024	Weekend	large swells		choppy		frequent whitecaps					choppy
02 Jul 2024	Midweek										
03 Jul 2024	Midweek										
04 Jul 2024	Midweek			choppy	calm/rippled		choppy				frequent whitecaps choppy
05 Jul 2024	Midweek										
06 Jul 2024	Weekend										
07 Jul 2024	Weekend	choppy		calm/rippled		frequent whitecaps calm/rippled		calm/rippled			calm/rippled
08 Jul 2024	Midweek										
09 Jul 2024	Midweek										
10 Jul 2024	Midweek				calm/rippled		choppy		choppy		calm/rippled
11 Jul 2024	Midweek										
12 Jul 2024	Midweek										
13 Jul 2024	Weekend					large swells					choppy choppy
14 Jul 2024	Weekend										
15 Jul 2024	Midweek										
16 Jul 2024	Midweek			calm/rippled	choppy	choppy					calm/rippled
17 Jul 2024	Midweek										
18 Jul 2024	Midweek										
19 Jul 2024	Midweek					frequent whitecaps					frequent whitecaps
20 Jul 2024	Weekend										
21 Jul 2024	Weekend										
22 Jul 2024	Midweek			frequent whitecaps	choppy		large swells				frequent whitecaps
23 Jul 2024	Midweek										
24 Jul 2024	Midweek										
25 Jul 2024	Midweek			frequent whitecaps				calm/rippled			
26 Jul 2024	Midweek										
27 Jul 2024	Weekend										
28 Jul 2024	Weekend	frequent whitecaps		choppy		calm/rippled		choppy			calm/rippled
29 Jul 2024	Midweek										
30 Jul 2024	Midweek										
31 Jul 2024	Midweek			calm/rippled				choppy			
01 Aug 2024	Midweek										
02 Aug 2024	Midweek										
03 Aug 2024	Weekend			choppy		calm/rippled				calm/rippled	calm/rippled