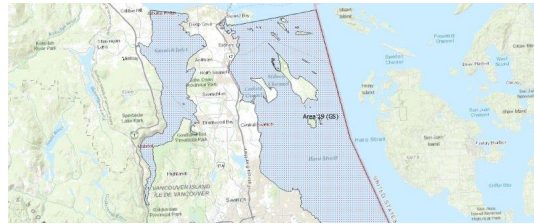


FISHERIES AND OCEANS CANADA

SOUTH COAST ASSESSMENT BULLETIN

CREEL SURVEY DATA REVIEW PACKAGE

Area 19 (GS) October 2024



Prepared By:

South Coast Salmon Stock Assessment Section

Sunday 24th November, 2024



Fisheries and Oceans
Canada

Pêches et Océans
Canada



Table 1: Numbers of Interviews conducted contributing to the area by day and access site.

Date	Day Type	Cattle Point		Cowichan Bay PM	Mill Bay		Sidney (Tulista Park Ramp)	
		AM	PM		AM	PM	AM	PM
28 Sep 2024	Weekend			1		7		
29 Sep 2024	Weekend	1						
30 Sep 2024	Midweek		1		2			
01 Oct 2024	Midweek							
02 Oct 2024	Midweek							
03 Oct 2024	Midweek							
04 Oct 2024	Midweek							
05 Oct 2024	Weekend						5	
06 Oct 2024	Weekend							12
07 Oct 2024	Midweek							7
08 Oct 2024	Midweek							
09 Oct 2024	Midweek							
10 Oct 2024	Midweek							
11 Oct 2024	Midweek							4
12 Oct 2024	Weekend					3		
13 Oct 2024	Weekend							5
14 Oct 2024	Weekend							
15 Oct 2024	Midweek							
16 Oct 2024	Midweek						1	
17 Oct 2024	Midweek							
18 Oct 2024	Midweek							
19 Oct 2024	Weekend							
20 Oct 2024	Weekend				2			
21 Oct 2024	Midweek					9		
22 Oct 2024	Midweek							
23 Oct 2024	Midweek							
24 Oct 2024	Midweek							
25 Oct 2024	Midweek				2			
26 Oct 2024	Weekend							
27 Oct 2024	Weekend							
28 Oct 2024	Midweek							
29 Oct 2024	Midweek							
30 Oct 2024	Midweek							
31 Oct 2024	Midweek					3	1	
01 Nov 2024	Midweek							
02 Nov 2024	Weekend							
03 Nov 2024	Weekend							

Table 2: Daily tally of interviews, catch and effort.

Date	Day	Average Fishing Conditions	Interviews & Log Trips	Chinook	Coho	Sockeye	Halibut	Observed Fishing	Flight Time	Expanded Fishing
28-Sep-2024	Saturday	calm/rippled	8	1						
29-Sep-2024	Sunday	frequent whitecaps	1							
30-Sep-2024	Monday	calm/rippled	3							
01-Oct-2024	Tuesday		0							
02-Oct-2024	Wednesday		0							
03-Oct-2024	Thursday		0							
04-Oct-2024	Friday		0							
05-Oct-2024	Saturday	calm/rippled	5					8	0957	
06-Oct-2024	Sunday	calm/rippled	12				1			
07-Oct-2024	Monday	calm/rippled	7	3						
08-Oct-2024	Tuesday		0							
09-Oct-2024	Wednesday		0					3	1000	
10-Oct-2024	Thursday		0							
11-Oct-2024	Friday	calm/rippled	4							
12-Oct-2024	Saturday	calm/rippled	3							
13-Oct-2024	Sunday	calm/rippled	5							
14-Oct-2024	Monday (Thanksgiving)		0					4	0954	
15-Oct-2024	Tuesday		0					1	0953	
16-Oct-2024	Wednesday	calm/rippled	1							
17-Oct-2024	Thursday		0							
18-Oct-2024	Friday		0							
19-Oct-2024	Saturday		0							
20-Oct-2024	Sunday	choppy	2							
21-Oct-2024	Monday	calm/rippled	9					1	1000	
22-Oct-2024	Tuesday		0							
23-Oct-2024	Wednesday		0							
24-Oct-2024	Thursday		0					0	0957	
25-Oct-2024	Friday	calm/rippled	2							
26-Oct-2024	Saturday		0					1	0959	
27-Oct-2024	Sunday		0					0	0952	
28-Oct-2024	Monday		0							
29-Oct-2024	Tuesday		0							
30-Oct-2024	Wednesday		0							
31-Oct-2024	Thursday	choppy	4							
01-Nov-2024	Friday		0							
02-Nov-2024	Saturday		0							
03-Nov-2024	Sunday		0					0	1030	
	Totals	calm/rippled	27	3				1*		*
	Totals	calm/rippled	27				1	3*		*

* Average number of boats Observed and Expanded

Table 3: Simple area based cpue (catch per boat trip) expansion.

Day Type	Average Expanded Boats	Number of Days	Total Estimated Effort	CPUE				Retained			
				Chinook	Coho	Sockeye	Halibut	Chinook	Coho	Sockeye	Halibut
Midweek		22		0.111							
Weekend		9					0.037				

Table 4: Recent years estimates of retained catch and effort.

Year	Month	Total Effort	Chinook Kept	Coho Kept	Sockeye Kept	Halibut Kept
2019	October	45	2			0
2020	October	214	11			0
2021	October	114	2			0
2023	October	153	38	7		0
5-Yr Avg	October	132	13	7		0

Table 5: Sport Head Recovery Review.

Species	Creel Marked Catch	Creel Mark Rate	Creel Submission Rate	iRec Marked Catch	iRec Mark Rate	iRec Submission Rate	Sport Head Recoveries
---------	--------------------	-----------------	-----------------------	-------------------	----------------	----------------------	-----------------------

Table 6: Guided Proprtions Review.

Data Source	Interviews / Angler Days	Guided Proportion
-------------	--------------------------	-------------------

Figure 1: Proportion of each day's fishing by hour.

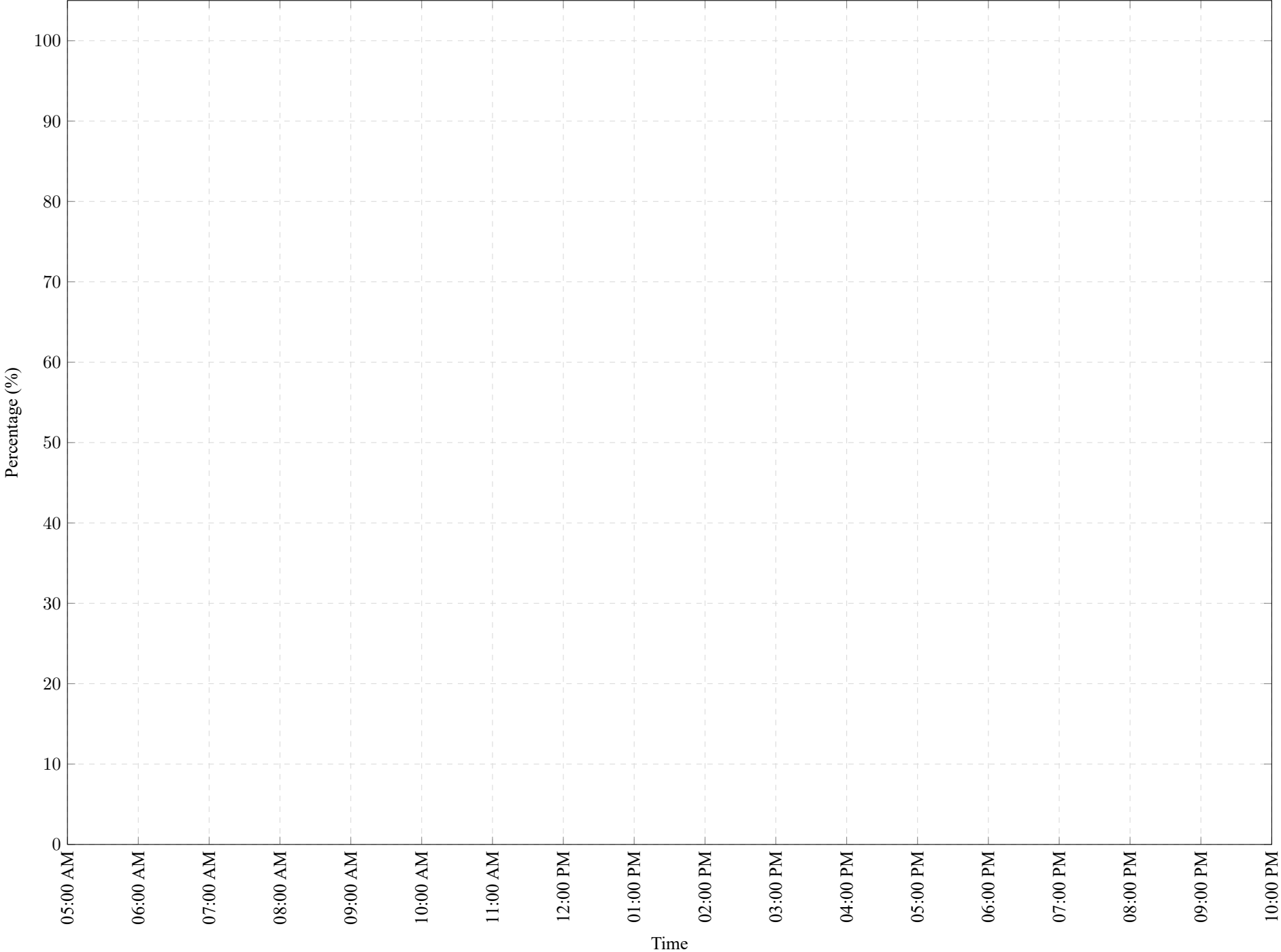


Table 7: Proportion of each day's fishing by hour.

Areas	Day Type	6:00	7:00	8:00	9:00	10:00	11:00	12:00	01:00	02:00	03:00	04:00	05:00	06:00	07:00	08:00	09:00	10:00
		AM	AM	AM	AM	AM	AM	PM	PM	PM	PM	PM	PM	PM	PM	PM	PM	PM

Table 8: Daily Fishing Conditions.

Date	Day Type	Cattle Point	Cowichan Bay	Mill Bay	Sidney (Tulista Park Ramp)
28 Sep 2024	Weekend		calm/rippled	calm/rippled	
29 Sep 2024	Weekend	frequent whitecaps			
30 Sep 2024	Midweek	calm/rippled		calm/rippled	
01 Oct 2024	Midweek				
02 Oct 2024	Midweek				
03 Oct 2024	Midweek				
04 Oct 2024	Midweek				
05 Oct 2024	Weekend				calm/rippled
06 Oct 2024	Weekend				calm/rippled
07 Oct 2024	Midweek				calm/rippled
08 Oct 2024	Midweek				
09 Oct 2024	Midweek				
10 Oct 2024	Midweek				
11 Oct 2024	Midweek				calm/rippled
12 Oct 2024	Weekend			calm/rippled	
13 Oct 2024	Weekend				calm/rippled
14 Oct 2024	Weekend				
15 Oct 2024	Midweek				
16 Oct 2024	Midweek				calm/rippled
17 Oct 2024	Midweek				
18 Oct 2024	Midweek				
19 Oct 2024	Weekend				
20 Oct 2024	Weekend			choppy	
21 Oct 2024	Midweek			calm/rippled	
22 Oct 2024	Midweek				
23 Oct 2024	Midweek				
24 Oct 2024	Midweek				
25 Oct 2024	Midweek			calm/rippled	
26 Oct 2024	Weekend				
27 Oct 2024	Weekend				
28 Oct 2024	Midweek				
29 Oct 2024	Midweek				
30 Oct 2024	Midweek				
31 Oct 2024	Midweek			choppy	frequent whitecaps
01 Nov 2024	Midweek				
02 Nov 2024	Weekend				
03 Nov 2024	Weekend				