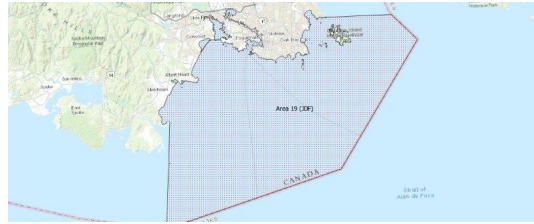


FISHERIES AND OCEANS CANADA

SOUTH COAST ASSESSMENT BULLETIN

CREEL SURVEY DATA REVIEW PACKAGE

Area 19 (JDF) May 2025



Prepared By:
South Coast Salmon Stock Assessment Section

Wednesday 25th June, 2025



Fisheries and Oceans
Canada

Pêches et Océans
Canada



Table 1: Numbers of Interviews conducted contributing to the area by day and access site.

Date	Day Type	Cattle Point		Cheanuh		Flemming		Pedder Bay	
		AM	PM	AM	PM	AM	PM	AM	PM
28 Apr 2025	Midweek								
29 Apr 2025	Midweek								
30 Apr 2025	Midweek								
01 May 2025	Midweek		8						
02 May 2025	Midweek								
03 May 2025	Weekend	2							
04 May 2025	Weekend							21	
05 May 2025	Midweek								
06 May 2025	Midweek							12	
07 May 2025	Midweek								
08 May 2025	Midweek								
09 May 2025	Midweek						14		
10 May 2025	Weekend								
11 May 2025	Weekend								
12 May 2025	Midweek		4						
13 May 2025	Midweek								
14 May 2025	Midweek								
15 May 2025	Midweek								
16 May 2025	Midweek								
17 May 2025	Weekend								
18 May 2025	Weekend								
19 May 2025	Weekend		1						
20 May 2025	Midweek				1				
21 May 2025	Midweek								9
22 May 2025	Midweek						5		
23 May 2025	Midweek								
24 May 2025	Weekend					34			16
25 May 2025	Weekend						2		
26 May 2025	Midweek								
27 May 2025	Midweek								
28 May 2025	Midweek								
29 May 2025	Midweek								
30 May 2025	Midweek								
31 May 2025	Weekend			3					
01 Jun 2025	Weekend				5				
02 Jun 2025	Midweek								1
03 Jun 2025	Midweek								

Table 2: Daily tally of interviews, catch and effort.

Date	Day	Average Fishing Conditions	Interviews & Log Trips	Chinook	Coho	Sockeye	Halibut	Observed Fishing	Flight Time	Expanded Fishing
28-Apr-2025	Monday		0							
29-Apr-2025	Tuesday		0							
30-Apr-2025	Wednesday		0							
01-May-2025	Thursday	calm/rippled	8	2						
02-May-2025	Friday		0							
03-May-2025	Saturday	choppy	2							
04-May-2025	Sunday	calm/rippled	21				17	53	0929	77
05-May-2025	Monday		0					61	0922	112
06-May-2025	Tuesday	calm/rippled	12	1			6			
07-May-2025	Wednesday		0							
08-May-2025	Thursday		0							
09-May-2025	Friday	calm/rippled	14	3						
10-May-2025	Saturday		0					38	0926	56
11-May-2025	Sunday		0							
12-May-2025	Monday	choppy	4					8	0921	15
13-May-2025	Tuesday		0							
14-May-2025	Wednesday		0							
15-May-2025	Thursday		0							
16-May-2025	Friday		0							
17-May-2025	Saturday		0							
18-May-2025	Sunday		0							
19-May-2025	Monday (Victoria Day)	choppy	1							
20-May-2025	Tuesday	calm/rippled	1				2	25	0925	47
21-May-2025	Wednesday	calm/rippled	9	4			4			
22-May-2025	Thursday	frequent whitecaps	5	2			2			
23-May-2025	Friday		0							
24-May-2025	Saturday	calm/rippled	50	15			15	73	0933	106
25-May-2025	Sunday	choppy	2					14	0920	20
26-May-2025	Monday		0							
27-May-2025	Tuesday		0					25	0923	46
28-May-2025	Wednesday		0							
29-May-2025	Thursday		0							
30-May-2025	Friday		0							
31-May-2025	Saturday	choppy	3	1						
01-Jun-2025	Sunday	calm/rippled	5				1	92	0922	134
02-Jun-2025	Monday	choppy	1				2			
03-Jun-2025	Tuesday		0							
	Totals	calm/rippled	53	12			14	30*		55*
	Totals	choppy	79	16			32	45*		65*

* Average number of boats Observed and Expanded

Table 3: Simple area based cpue (catch per boat trip) expansion.

Day Type	Average Expanded Boats	Number of Days	Total Estimated Effort	CPUE				Retained			
				Chinook	Coho	Sockeye	Halibut	Chinook	Coho	Sockeye	Halibut
Weekend	65	10	650	0.203			0.405	132			263
Midweek	55	21	1155	0.226			0.264	261			305

Table 4: Recent years estimates of retained catch and effort.

Year	Month	Total Effort	Chinook Kept	Coho Kept	Sockeye Kept	Halibut Kept
2020	May	1439				257
2021	May	1623	0			956
2022	May	1269	0			318
2023	May	966	178			160
2024	May	1223	177			459
2025	May	1717	409	0		642
5-Yr Avg	May	1304	89			430

Table 5: Sport Head Recovery Review.

Species	Creel Marked Catch	Creel Mark Rate	Creel Submission Rate	iRec Marked Catch	iRec Mark Rate	iRec Submission Rate	Sport Head Recoveries
---------	--------------------	-----------------	-----------------------	-------------------	----------------	----------------------	-----------------------

Table 6: Guided Proprtions Review.

Data Source	Interviews / Angler Days	Guided Proportion
Creel Interivews	132	2%

Figure 1: Proportion of each day's fishing by hour.

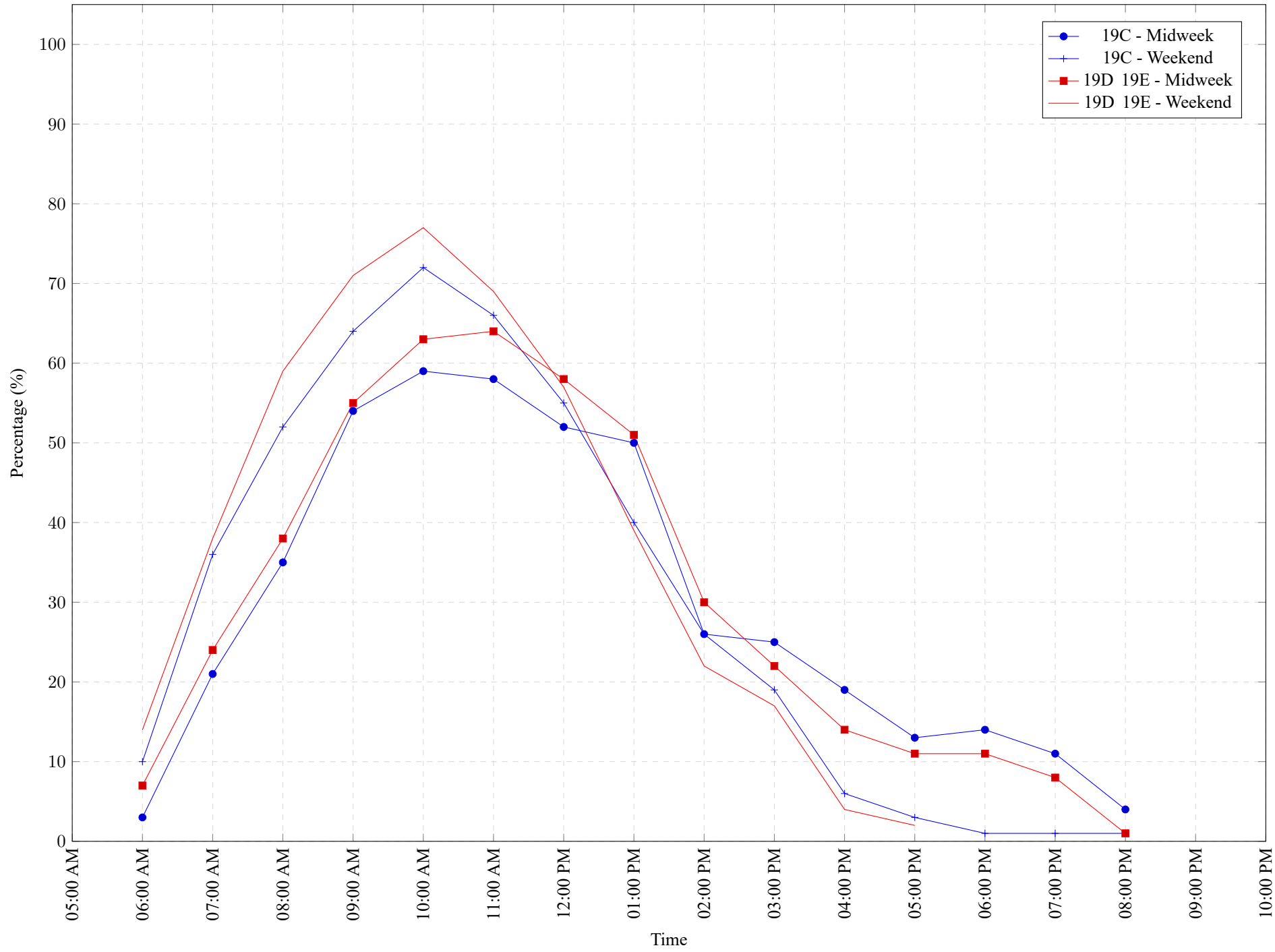


Table 7: Proportion of each day's fishing by hour.

Areas	Day Type	6:00	7:00	8:00	9:00	10:00	11:00	12:00	01:00	02:00	03:00	04:00	05:00	06:00	07:00	08:00	09:00	10:00
		AM	AM	AM	AM	AM	AM	PM	PM	PM	PM	PM	PM	PM	PM	PM	PM	PM
19C	Midweek	3%	21%	35%	54%	59%	58%	52%	50%	26%	25%	19%	13%	14%	11%	4%	0%	0%
19C	Weekend	10%	36%	52%	64%	72%	66%	55%	40%	26%	19%	6%	3%	1%	1%	1%	0%	0%
19D 19E	Midweek	7%	24%	38%	55%	63%	64%	58%	51%	30%	22%	14%	11%	11%	8%	1%	0%	0%
19D 19E	Weekend	14%	38%	59%	71%	77%	69%	57%	39%	22%	17%	4%	2%	0%	0%	0%	0%	0%

Table 8: Daily Fishing Conditions.

Date	Day Type	Cattle Point	Cheanuh	Flemming	Pedder Bay
28 Apr 2025	Midweek				
29 Apr 2025	Midweek				
30 Apr 2025	Midweek				
01 May 2025	Midweek	calm/rippled			
02 May 2025	Midweek				
03 May 2025	Weekend	choppy			
04 May 2025	Weekend				calm/rippled
05 May 2025	Midweek				
06 May 2025	Midweek				calm/rippled
07 May 2025	Midweek				
08 May 2025	Midweek				
09 May 2025	Midweek			calm/rippled	
10 May 2025	Weekend				
11 May 2025	Weekend				
12 May 2025	Midweek	choppy			
13 May 2025	Midweek				
14 May 2025	Midweek				
15 May 2025	Midweek				
16 May 2025	Midweek				
17 May 2025	Weekend				
18 May 2025	Weekend				
19 May 2025	Weekend	choppy			
20 May 2025	Midweek		calm/rippled		
21 May 2025	Midweek				calm/rippled
22 May 2025	Midweek			frequent whitecaps	
23 May 2025	Midweek				
24 May 2025	Weekend			calm/rippled	calm/rippled
25 May 2025	Weekend			choppy	
26 May 2025	Midweek				
27 May 2025	Midweek				
28 May 2025	Midweek				
29 May 2025	Midweek				
30 May 2025	Midweek				
31 May 2025	Weekend		choppy		
01 Jun 2025	Weekend		calm/rippled		
02 Jun 2025	Midweek				choppy
03 Jun 2025	Midweek				