

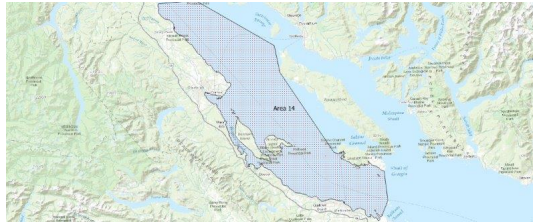
# FISHERIES AND OCEANS CANADA

## SOUTH COAST ASSESSMENT BULLETIN

### CREEL SURVEY DATA REVIEW PACKAGE

---

## Area 14 August 2025



---

*Prepared By:*  
South Coast Salmon Stock Assessment Section

Sunday 5<sup>th</sup> October, 2025



Fisheries and Oceans  
Canada

Pêches et Océans  
Canada



Table 1: Numbers of Interviews conducted contributing to the area by day and access site.

		Bucaneer	Comox Mun		Discovery Marina South		French Ck		Kitty Coleman		Pacific Play		Schooner		Union Bay		Westview	
Date	Day Type	PM	AM	PM	AM	PM	AM	PM	AM	PM	AM	PM	AM	PM	AM	PM	AM	PM
29 Jul 2025	Midweek										13							
30 Jul 2025	Midweek																	
31 Jul 2025	Midweek			15														
01 Aug 2025	Midweek														5			
02 Aug 2025	Weekend				3				8									
03 Aug 2025	Weekend					2		28					3		2			
04 Aug 2025	Weekend									8								
05 Aug 2025	Midweek																	
06 Aug 2025	Midweek						5											
07 Aug 2025	Midweek			12														
08 Aug 2025	Midweek								25		13	7						
09 Aug 2025	Weekend		5															
10 Aug 2025	Weekend			4							2					1		
11 Aug 2025	Midweek															3		
12 Aug 2025	Midweek																	
13 Aug 2025	Midweek										3						5	
14 Aug 2025	Midweek																	
15 Aug 2025	Midweek																	
16 Aug 2025	Weekend																	
17 Aug 2025	Weekend																	
18 Aug 2025	Midweek			11														
19 Aug 2025	Midweek							6										
20 Aug 2025	Midweek												2					
21 Aug 2025	Midweek										12							
22 Aug 2025	Midweek																	
23 Aug 2025	Weekend							33			12							
24 Aug 2025	Weekend						14								6			2
25 Aug 2025	Midweek																	
26 Aug 2025	Midweek							21										
27 Aug 2025	Midweek																	
28 Aug 2025	Midweek	1								18			2			11	1	
29 Aug 2025	Midweek										9							
30 Aug 2025	Weekend																1	
31 Aug 2025	Weekend								4									
01 Sep 2025	Weekend									5								
02 Sep 2025	Midweek										4							
03 Sep 2025	Midweek				2													

*Table 2: Daily tally of interviews, catch and effort.*

Date	Day	Average Fishing Conditions	Interviews & Log Trips	Chinook	Coho	Sockeye	Halibut	Observed Fishing	Flight Time	Expanded Fishing
29-Jul-2025	Tuesday	calm/rippled	13	10	21			112	1042	371
30-Jul-2025	Wednesday		0							
31-Jul-2025	Thursday	calm/rippled	15	3	32					
01-Aug-2025	Friday	calm/rippled	5		2					
02-Aug-2025	Saturday	calm/rippled	11	19	11					
03-Aug-2025	Sunday	choppy	35	29	24					
04-Aug-2025	Monday (B.C. Day)	choppy	8	3	2					
05-Aug-2025	Tuesday		0							
06-Aug-2025	Wednesday	frequent whitecaps	5	7	7			4	1146	14
07-Aug-2025	Thursday	calm/rippled	12	10	21					
08-Aug-2025	Friday	calm/rippled	45	29	30					
09-Aug-2025	Saturday	calm/rippled	5	5	3			117	0939	283
10-Aug-2025	Sunday	choppy	7		4					
11-Aug-2025	Monday	calm/rippled	3	1	1			14	0939	51
12-Aug-2025	Tuesday		0							
13-Aug-2025	Wednesday	calm/rippled	8	9	3					
14-Aug-2025	Thursday		0							
15-Aug-2025	Friday		0							
16-Aug-2025	Saturday		0					18	0936	44
17-Aug-2025	Sunday		0							
18-Aug-2025	Monday	calm/rippled	11	20	11					
19-Aug-2025	Tuesday	choppy	6	2	11					
20-Aug-2025	Wednesday	choppy	2	2	8			68	0946	244
21-Aug-2025	Thursday	calm/rippled	12	6	4	4				
22-Aug-2025	Friday		0							
23-Aug-2025	Saturday	calm/rippled	45	39	51			109	0943	265
24-Aug-2025	Sunday	calm/rippled	22	18	10	13				
25-Aug-2025	Monday		0					60	0948	214
26-Aug-2025	Tuesday	calm/rippled	21	12	21					
27-Aug-2025	Wednesday	calm/rippled	12	7	7					
28-Aug-2025	Thursday	calm/rippled	21	11	26		1			
29-Aug-2025	Friday	calm/rippled	9	12	4					
30-Aug-2025	Saturday	choppy	1	1	1			84	0942	202
31-Aug-2025	Sunday	calm/rippled	4	3	2					
01-Sep-2025	Monday (Labour Day)	calm/rippled	5	5	1					
02-Sep-2025	Tuesday	calm/rippled	4	16	6					
03-Sep-2025	Wednesday	choppy	2	11						
	Totals	calm/rippled	172	128	156	4	1	37*		131*
	Totals	calm/rippled	138	117	108	13		82*		199*

\* Average number of boats Observed and Expanded

**Table 3: Simple area based cpue (catch per boat trip) expansion.**

Day Type	Average Expanded Boats	Number of Days	Total Estimated Effort	CPUE				Retained			
				Chinook	Coho	Sockeye	Halibut	Chinook	Coho	Sockeye	Halibut
Midweek	131	20	2620	0.744	0.907	0.023	0.006	1949	2376	60	16
Weekend	199	11	2189	0.848	0.783	0.094		1856	1714	206	

**Table 4: Recent years estimates of retained catch and effort.**

Year	Month	Total Effort	Chinook Kept	Coho Kept	Sockeye Kept	Halibut Kept
2020	August	8431	5075	965		3
2021	August	7068	5710	255		9
2022	August	8351	8799	291	7	0
2023	August	6042	5533	2247	0	12
2024	August	6819	8031	2198		23
2025	August	4825	4187	5144	492	4
5-Yr Avg	August	7342	6630	1191	4	9

**Table 5: Sport Head Recovery Review.**

Species	Creel Marked Catch	Creel Mark Rate	Creel Submission Rate	iRec Marked Catch	iRec Mark Rate	iRec Submission Rate	Sport Head Recoveries
---------	--------------------	-----------------	-----------------------	-------------------	----------------	----------------------	-----------------------

**Table 6: Guided Proprtions Review.**

Data Source	Interviews / Angler Days	Guided Proportion
Creel Interivews	310	4%

Figure 1: Proportion of each day's fishing by hour.

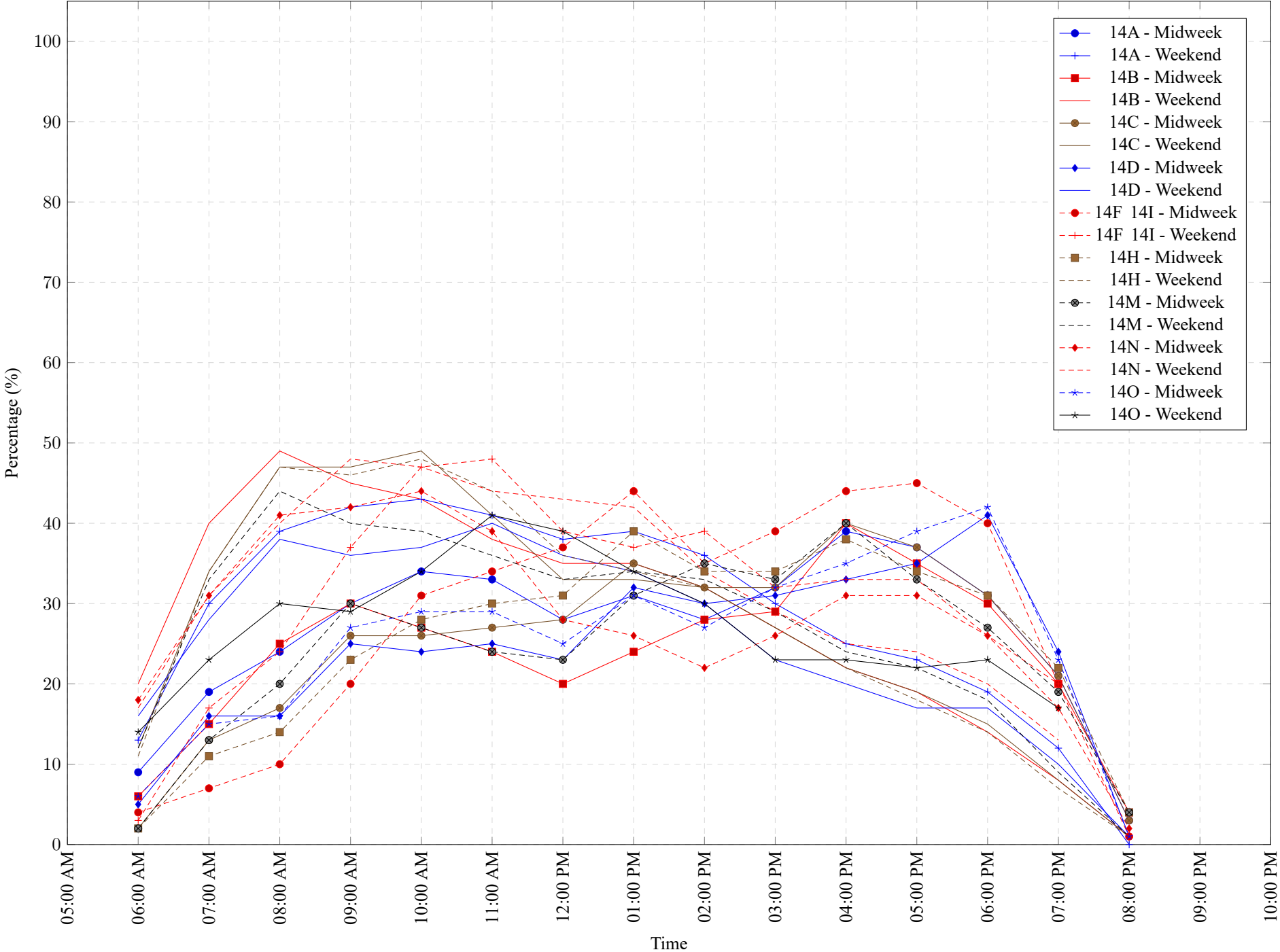


Table 7: Proportion of each day's fishing by hour.

Areas	Day Type	6:00 AM	7:00 AM	8:00 AM	9:00 AM	10:00 AM	11:00 AM	12:00 PM	01:00 PM	02:00 PM	03:00 PM	04:00 PM	05:00 PM	06:00 PM	07:00 PM	08:00 PM	09:00 PM	10:00 PM
14A	Midweek	9%	19%	24%	30%	34%	33%	28%	31%	28%	32%	39%	37%	31%	21%	3%	0%	0%
14A	Weekend	13%	30%	39%	42%	43%	41%	38%	39%	36%	30%	25%	23%	19%	12%	0%	0%	0%
14B	Midweek	6%	15%	25%	30%	27%	24%	20%	24%	28%	29%	40%	35%	30%	20%	4%	0%	0%
14B	Weekend	20%	40%	49%	45%	43%	38%	35%	35%	32%	27%	22%	19%	14%	8%	1%	0%	0%
14C	Midweek	2%	13%	17%	26%	26%	27%	28%	35%	32%	32%	40%	37%	31%	21%	3%	0%	0%
14C	Weekend	12%	34%	47%	47%	49%	41%	33%	33%	32%	27%	22%	19%	15%	8%	1%	0%	0%
14D	Midweek	5%	16%	16%	25%	24%	25%	23%	32%	30%	31%	33%	35%	41%	24%	1%	0%	0%
14D	Weekend	16%	28%	38%	36%	37%	40%	36%	34%	30%	23%	20%	17%	17%	10%	1%	0%	0%
14F 14I	Midweek	4%	7%	10%	20%	31%	34%	37%	44%	35%	39%	44%	45%	40%	20%	1%	0%	0%
14F 14I	Weekend	3%	17%	24%	37%	47%	48%	39%	37%	39%	32%	33%	33%	26%	20%	0%	0%	0%
14H	Midweek	2%	11%	14%	23%	28%	30%	31%	39%	34%	34%	38%	34%	31%	22%	4%	0%	0%
14H	Weekend	11%	34%	47%	46%	48%	44%	36%	34%	32%	27%	22%	18%	14%	7%	1%	0%	0%
14M	Midweek	2%	13%	20%	30%	27%	24%	23%	31%	35%	33%	40%	33%	27%	19%	4%	0%	0%
14M	Weekend	12%	33%	44%	40%	39%	36%	33%	34%	33%	29%	24%	22%	18%	9%	1%	0%	0%
14N	Midweek	18%	31%	41%	42%	44%	39%	28%	26%	22%	26%	31%	31%	26%	17%	2%	0%	0%
14N	Weekend	17%	31%	40%	48%	47%	44%	43%	42%	34%	29%	25%	24%	20%	13%	0%	0%	0%
14O	Midweek	6%	15%	16%	27%	29%	29%	25%	31%	27%	32%	35%	39%	42%	23%	1%	0%	0%
14O	Weekend	14%	23%	30%	29%	34%	41%	39%	34%	30%	23%	23%	22%	23%	17%	0%	0%	0%

**Table 8: Daily Fishing Conditions.**

Date	Day Type	Bucaneer	Comox Mun	Discovery Marina South	French Ck	Kitty Coleman	Pacific Play	Schooner	Union Bay	Westview
29 Jul 2025	Midweek						calm/rippled			
30 Jul 2025	Midweek									
31 Jul 2025	Midweek		calm/rippled							
01 Aug 2025	Midweek								calm/rippled	
02 Aug 2025	Weekend			calm/rippled		calm/rippled				
03 Aug 2025	Weekend			calm/rippled	choppy			choppy	calm/rippled	
04 Aug 2025	Weekend					choppy				
05 Aug 2025	Midweek									
06 Aug 2025	Midweek				frequent whitecaps					
07 Aug 2025	Midweek		calm/rippled							
08 Aug 2025	Midweek					calm/rippled	calm/rippled	calm/rippled		
09 Aug 2025	Weekend		calm/rippled							
10 Aug 2025	Weekend		choppy				choppy		choppy	
11 Aug 2025	Midweek								calm/rippled	
12 Aug 2025	Midweek									
13 Aug 2025	Midweek						choppy			calm/rippled
14 Aug 2025	Midweek									
15 Aug 2025	Midweek									
16 Aug 2025	Weekend									
17 Aug 2025	Weekend									
18 Aug 2025	Midweek		calm/rippled							
19 Aug 2025	Midweek				choppy					
20 Aug 2025	Midweek							choppy		
21 Aug 2025	Midweek						calm/rippled			
22 Aug 2025	Midweek									
23 Aug 2025	Weekend				calm/rippled		calm/rippled			
24 Aug 2025	Weekend				choppy				calm/rippled	calm/rippled
25 Aug 2025	Midweek									
26 Aug 2025	Midweek				calm/rippled					
27 Aug 2025	Midweek								calm/rippled	calm/rippled
28 Aug 2025	Midweek	calm/rippled				calm/rippled		choppy		
29 Aug 2025	Midweek						calm/rippled			
30 Aug 2025	Weekend									choppy
31 Aug 2025	Weekend					calm/rippled				
01 Sep 2025	Weekend					calm/rippled				
02 Sep 2025	Midweek						calm/rippled			
03 Sep 2025	Midweek			choppy						